

# Monthly Report on Short-term Transactions of Electricity in India

January 2025



Economics Division  
Central Electricity Regulatory Commission  
6th, 7th & 8th Floors, Tower B, World Trade Centre  
Nauroji Nagar, New Delhi- 110029



# Contents

S.No.	Contents	Page No
	Contents	i
	List of Tables	ii
	List of Figures	iii
	Abbreviations	iv
1	Introduction	1
2	Volume of Short-term Transactions of Electricity and DSM	1
3	Price of Short-term Transactions of Electricity and DSM Charges	4
3.1	<i>Price of electricity transacted through Traders</i>	4
3.2	<i>Price of electricity transacted through Power Exchanges</i>	4
3.3	<i>DSM Charges</i>	4
4	Trading Margin	5
5	Volume of Short-term Transactions of Electricity (Regional Entity-wise)	5
6	Congestion on Inter-State Transmission Corridor for Day-Ahead Market and Real-Time Market on Power Exchanges	6
7	Volume and Price of Renewable Energy Certificates (RECs)	7
8	Inferences	8

<b>S.No.</b>	<b>List of Tables</b>	<b>Page No.</b>
Table-1	Volume of Short-term Transactions of Electricity and DSM (All India)	10
Table-2	Percentage Share of Electricity Transacted by Trading Licensees	12
Table-3	Price of Electricity Transacted through Traders	13
Table-4	Price of Electricity Transacted through Traders (Time-wise)	13
Table-5	Price of Electricity Transacted in Day Ahead Market	13
Table-6	Price of Electricity Transacted in Green Day Ahead Market	13
Table-7	Price of Electricity Transacted in High Price Day Ahead Market	13
Table-8	Price of Electricity Transacted in Real Time Market	13
Table-9	Volume and Price of Electricity in Term Ahead Market of IEX	13
Table-10	Volume and Price of Electricity in Term Ahead Market of PXIL	14
Table-11	Volume and Price of Electricity in Term Ahead Market of HPX	14
Table-12	Volume and Price of Electricity in Green Term Ahead Market of IEX	14
Table-13	Volume and Price of Electricity in Green Term Ahead Market of PXIL	14
Table-14	Volume and Price of Electricity in Green Term Ahead Market of HPX	14
Table-15	Volume and Price of Electricity in High Price Term Ahead Market of IEX	14
Table-16	Volume and Price of Electricity in High Price Term Ahead Market of PXIL	14
Table-17	Volume and Price of Electricity in High Price Term Ahead Market of HPX	14
Table-18	Volume of Electricity Sold through Bilateral	16
Table-19	Volume of Electricity Purchased through Bilateral	18
Table-20	Volume of Electricity Sold in Day Ahead Market through Power Exchanges	19
Table-21	Volume of Electricity Purchased in Day Ahead Market through Power Exchanges	22
Table-22	Volume of Electricity Sold in Green Day Ahead Market through Power Exchanges	23
Table-23	Volume of Electricity Purchased in Green Day Ahead Market through Power Exchanges	25
Table-24	Volume of Electricity Sold in High Price Day Ahead Market through Power Exchanges	26
Table-25	Volume of Electricity Purchased in High Price Day Ahead Market through Power Exchanges	26
Table-26	Volume of Electricity Sold in Real Time Market through Power Exchanges	27
Table-27	Volume of Electricity Purchased in Real Time Market through Power Exchanges	31
Table-28	Total Volume of Net Transactions through Power Exchanges (Regional Entity-wise)	33
Table-29	Details of Congestion in Power Exchanges	37
Table-30	Volume of Transactions through Power Exchanges (Day-wise)	38
Table-31(a)	Price of Day Ahead Transactions of Electricity (Day-Wise)	39
Table-31(b)	Price of Green Day Ahead Transactions of Electricity (Day-Wise)	40
Table-31(c)	Price of Real Time Transactions of Electricity (Day-Wise)	41
Table-31(d)	Price of High Price Day Ahead Transactions of Electricity (Day-Wise)	42
Table-32	Volume of Transactions through Power Exchanges (Regional Entity-wise)	43
Table-33	Volume and Charges under DSM (Day wise)	47
Table-34	Volume of Electricity Under drawal/ Over Injection (Exported) under DSM	48
Table-35	Volume of Electricity Over drawal/ Under Injection (Imported) under DSM	54
Table-36	Volume and Price of Renewable Energy Certificates (RECs) transacted through Power Exchanges and through Traders (Bilateral)	60
Table-37(a)	Volume and Price of Cross Border Trade through Day Ahead Market at IEX	60
Table-37(b)	Volume and Price of Cross Border Trade through Real Time Market at IEX	60

<b>S. No.</b>	<b>List of Figures</b>	<b>Page No.</b>
Figure-1	Volume of various kinds of Electricity Transactions in Total Electricity Generation	10
Figure-2	Volume of Short-term Transactions of Electricity and DSM Volume	10
Figure-3	Volume transacted in different markets segments on Power Exchanges	11
Figure-4	Volume of transactions on Power Exchange and DSM Volume (Day-wise)	11
Figure-5	Percentage Share of Electricity Transacted by Trading Licensees	12
Figure-6	Weighted Average Price of Short-term Transactions of Electricity	15
Figure-7	Weighted Average Price of Short-term Transactions of Electricity (Day-wise)	15

## Abbreviations

<b>Abbreviation</b>	<b>Expanded Version</b>
ABSP_ANTP	Acme Bhiwadi Solar Power Private Limited, Anantpur
ACBIL	ACB (India) Limited
ACP	Area Clearing Price
ACV	Area Clearing Volume
ACME_SLR	ACME Solar Power Project
ACME_RUMS	Acme Rewa Ultra Mega Solar Project
ADANI_4RE	Adani Renewable Energy Holding Four Limited
ADANI GREEN	Adani Green Energy Limited
ADANIHB_SLR	Adani Hybrid Energy Jaisalmer One Limited (Solar)
ADANI_SLR 4	Adani Solar Energy Four Private Limited
ADANIHB_WIND	Adani Hybrid Energy Jaisalmer One Limited (Wind)
ADEPT	Adept Renewable Technologies Private Limited
ADY1_PVGD	Adyah Solar Energy Pvt Ltd., Block 1 Pavagada Solar Park
ADY2_PVGD	Adyah Solar Energy Pvt Ltd., Block 2 Pavagada Solar Park
ADY3_PVGD	Adyah Solar Energy Pvt Ltd., Block 3 Pavagada Solar Park
ADY6_PVGD	Adyah Solar Energy Pvt Ltd., Block 6 Pavagada Solar Park
ADY10_PVGD	Adyah Solar Energy Pvt Ltd., Block 10 Pavagada Solar Park
ADY13_PVGD	Adyah Solar Energy Pvt Ltd., Block 13 Pavagada Solar Park
AGEMPL BHUJ	Adani Green Energy (MP) Ltd.,Bhuj
AHEJOL_S_FTG2	Adani Hybrid Energy Jaisalmer One Limited (SOLAR)
AHEJOL_W_FTG2	Adani Hybrid Energy Jaisalmer One Limited (WIND)
AHEJ2L_SOLAR	Adani Hybrid Energy Jaisalmer Two Limited (Solar)
AHEJ3L_SOLAR	Adani Hybrid Energy Jaisalmer Three Limited (Solar)
AHEJ4L_SOLAR	Adani Hybrid Energy Jaisalmer Four Limited-Hybrid Solar
AHEJ4L_WIND	Adani Hybrid Energy Jaisalmer Four Limited-Hybrid Wind
AHSP_ANTP	Acme Hisar Solar Power Private Limited,Anantpur
AKS_PVGD	ACME Kurukshetra Solar Energy Pvt. Ltd
AKSP_ANTP	Acme Karnal Solar Power Private Limited,Anantpur
ALFANAR_BHUJ	Alfanar Group Wind Project, Bhuj, Gujarat
ALTRA XERGI	Altra Xergi Power Private Limited
AMP_GREEN6	Amp Energy Green Six Private Limited
AMPLUS_AGES	Amplus Ages Private Limited
AMPS Hazira	Arcelor Mittal Nippon Steel, Hazira
APTEL	Appellate Tribunal for Electricity
ARERJL_SLR	Adani Renewable Energy Park Rajasthan Ltd.
ARINSUM_RUMS	Solenergi RewaUltraMega Solar Project
ARS_PVGD	ACME REWARI Solar Power Pvt Ltd.
ARTPP	Adani Power Limited - Raipur TPP
ASEJTL_SLR	Adani Solar Energy Jodhpur Two Ltd.
AVAADA1_PVGD	Avaada Solar Energy Private Ltd., Pavagada Project 1
AVAADA2_PVGD	Avaada Solar Energy Private Ltd., Pavagada Project 2
AVADARJHN_SLR	Avaada Rjhn Private Limited_Solar
AYANA_NPKUNTA	Ayana Power, NP Kunta
AZURE_ANTP	Azure Power,Anantpur
AZURE_PVGD	Azure Power,Pavagada
AZURE_SLR	Azure Power Solar Power Project
AZURE34_SLR	Azure Power 34 Pvt. Ltd. Solar Power Project
AZURE43_SLR	Azure Power Forty Three Private Limited
BALCO	Bharat Aluminum Company Limited
BARC	Bhabha Atomic Research Centre
BASOCHHU HEP	Basochhu Hydropower Plant Bhutan
BBMB	Bhakra Beas Management Board

BETAM_TCN	Betam Wind Energy Private Limited, Tuticorin
BHADRAVATHI HVDC	Bhadravathi High Voltage Direct Current Link
BRBCL	Bhartiya Rail Bijlee Company Limited
CEA	Central Electricity Authority
CERC	Central Electricity Regulatory Commission
CGPL	Coastal Gujarat Power Limited
CHUKHA HEP	Chhukha Hydroelectric Project, Bhutan
CHUZACHEN HEP	Chuzachen Hydro Electric Power Project
CLEAN_SLR	Clean Solar Power Pvt. Ltd
CLEANSPL_SLR	Clean Solar Jodhpur Pvt Ltd
COASTGEN	Coastal Energen Private Limited
DAGACHU	Dagachhu Hydro Power Corporation
DAM	Day Ahead Market
DEVKOOT_SLR	Devkoot Solar Power Plant, NTPC Green Energy Ltd.
DCPP	Donga Mahua Captive Power Plant
DD&DNH	Daman and Diu & Dadar Nagar Haveli
DGEN MEGA POWER	DGEN Mega Power Project
DGPCL Bhutan	Druk Green Power Corporation Ltd., Bhutan
DHARIWAL POWER	Dhariwal Power Station
DIKCHU HEP	Dikchu Hydro-electric Project, Sikkim
DOYANG HEP	DoyangHydro Electric Project
DSM	Deviation Settlement Mechanism
DVC	Damodar Valley Corporation
EDEN_SLR	Eden RE Cite Private limited
EMCO	EMCO Energy Limited
ESPL_RADHANESDA	Electro Solaire Private Limited, Radhanesda
ESSAR POWER	Essar Power Limited
FORTUM1_PVGD	Fortum Finnsurya Energy Private Ltd, Pavagada Project 1
FORTUM2_PVGD	Fortum Finnsurya Energy Private Ltd, Pavagada Project 2
FRV_ANTP	Fotowatio Renewable Ventures, Anantapur
FRV_NPK	Fotowatio Renewable Ventures, NP Kunta
GIPCL_RADHANESDA	Gujarat Industries Power Company Ltd, Radhanesda
GIWEL_BHUJ	Green infra wind energy Limited, Bhuj
GIWEL_TCN	Green Infra Wind Energy Limited, Tuticorin
GMR CHHATTISGARH	GMR Chhattisgarh Energy Limited
GMR KAMALANGA	GMR Kamalanga Energy Ltd.
G-DAM	Green Day Ahead Market
GRIAN	Grian Energy Private Limited
GSECL P-II	GSECL Raghnesda Solar Park (Phase-II)
G-TAM	Green Term Ahead Market
HPX	Hindustan Power Exchange Limited
HP-DAM	High Price Day Ahead Market
HP-TAM	High Price Term Ahead Market
HVDC ALPD	Alipurduar High Voltage Direct Current Link
HVDC CHAMPA	Champa-Kurukshetra High Voltage Direct Current Link
HVDC PUS	Pasauli High Voltage Direct Current Link
HVDC RAIGARH	Raigarh-Pugalur High Voltage Direct Current Link
IBEUL	Ind Bharat Energy Utkal Limited
IEX	Indian Energy Exchange Limited
IGSTPS	Indira Gandhi Super Thermal Power Station Jhajjar
IL&FS	Infrastructure Leasing & Financial Services Limited
INOX_BHUJ	INOX Wind Limited, Bhuj, Gujarat
J&K	Jammu & Kashmir
JAYPEE NIGRIE	Jaypee Nigrie Super Thermal Power Project

JHABUA POWER MP	Jhabua Thermal Power Project
JINDAL POWER	Jindal Power Limited
JINDAL STAGE-II	Jindal Power Ltd Stage II
JITPL	Jindal India Thermal Power Ltd.
JORETHANG	Jorethang Loop Hydroelectric Power Project
JSW_RENEW_2	JSW Renew Energy Two Limited
KAPP 3&4	Kakrapar Atomic Power Station Unit 3 & 4
KARCHAM WANGTOO	Karcham Wangtoo H.E. Project
KBUNL	Kanti Bijlee Utpadan Nigam Limited
KHURJA STPP	Khurja Super Thermal Power Plant
KORBA WEST POWER	Korba West Power Company Limited
KOTESHWAR	Koteshwar Hydro Power project
KREDL_PVGD	Karnataka Renewable Energy Development Ltd,Pavagada
KSK MAHANADI	KSK Mahanadi Power Ltd
KSMPL_SLR	Kilaj Solar (Maharashtra) Private Limited
KURICHU HEP	Kurichhu Hydro-electric Power Station, Bhutan
LANKO_AMK	LancoAmarkantak Power Private Limited
LANKO BUDHIL	LancoBudhil Hydro Power Private Limited
LANKOKONDAPALLY	Lanco Kondapally Power Private Limited
LOKTAK	Loktak Power Project
MAHINDRA_RUMS	Mahindra Rewa Ultra Mega Solar Project
MAHOBA_SLR	Mahoba Solar Power Project
MALANA	Malana Hydroelectric Plant
MANGDECHU HEP	Mangdechhu Hydroelectric Project, Mangdechhu River, Bhutan
Maruti Coal	Maruti Clean Coal and Power Limited
MB POWER	MB Power Ltd
MEENAKSHI	Meenakshi Energy Private Limited
MRPL	Mahindra Renewables Private Limited
MSEPL	Masaya Solar Energy Private Limited
MSRPL	Mega Solis Renewables Pvt. Ltd.
MTPS	TATA Power Mundra Thermal Power Station
MTPS II	Muzaffarpur Thermal Power Station – Stage II
MYTRAH_TCN	Mytrah Energy (India) Private Limited,Tuticorin
MU	Million Units
NAPP	Narora Atomic Power Plant
NCR ALLAHABAD	North Central Railway, Allahabad
NEEPCO	North Eastern Electric Power Corporation Limited
NEP	Nepal
NFL	National Fertilisers Limited
NHPC STATIONS	National Hydro Electric Power Corporation Ltd. Stations
NJPC	Nathpa Jhakri Hydroelectric Power Station
NLC	Neyveli Lignite Corporation Limited
NLDC	National Load Dispatch Centre
NOKHRA_STPP	Nokhra Solar Power Plant, NTPC Green Energy Ltd.
NPGC	Nabinagar Power Generating Company (Pvt.) Limited
NREL_DAYAPAR (W)	NREL-Dayapar Wind
NSPCL	NTPC - SAIL Power Company Private Limited
NTECLVallur	NTPC Tamil Nadu Energy Company Limited Vallur
NTPC_ANTP	NTPC Anantapur
NTPC STATIONS	National Thermal Power Corporation Ltd. Stations
NTPL	NLC Tamil Nadu Power Limited
NVVN	NTPC Vidyut Vyapar Nigam Limited
OCF	Order Carry Forward
ONEVOLT	Onevolt Energy Private Limited

ONGC Platana	ONGC Tripura Power Company
OPGC	Odisha Power Generation Corporation
ORANGE_TCN	Orange Renewable Power Pvt. Ltd,Tuticorin
OSTRO	Ostro Energy Private Limited
OTC	Over The Counter
PARAM_PVGD	Parampujya Solar Energy Private Ltd
PARE HEP	Pare hydroelectric project, Arunachal Pradesh
PX	Power Exchange
PXIL	Power Exchange India Limited
RAMPUR HEP	Rampur Hydro Electric Power Project
RANGIT HEP	Rangit Hydroelectric power project
RANGANADI HEP	Ranganadi Hydro Electric Power Project, Arunachal Pradesh
RAP-B	Rajasthan Atomic Power Plant-B
RAP-C	Rajasthan Atomic Power Plant-C
RAPP 7&8	Rajasthan Atomic Project 7&8
REC	Renewable Energy Certificate
REGL	Raigarh Energy Generation Limited
RENEW_BHACHAU	ReNew Power Limited, Bhachau
RENEW_BHUJ	ReNew Power Limited, Bhuj
RENEW_PVGD	ReNew Wind Energy (TN2) Private Limited
RENEW_ROSHNI FATEHGARH	Renew Surya Roshni Private Limited-Fatehgarh-III PS
RENEW_SAAAYAN	Renew Surya Aayan Private Limited
RENEW_SLR_BKN	Renew Solar Bikaner
RENEW_SOJAS	Renew Surya Ojas Private Limited-Wind
RENEW_SPRATAP	Renew Surya Pratap Private Limited
RENEW_SR_SLR	Renew Surya Ravi Private Limited (Solar)
RENEW_SVIHAAN	Renew Surya Vihaan Private Limited
RENEW_ROSHNI	Renew Surya Roshni Private Limited Koppal PS
RENEWJH_SLR	Renew Solar Energy (Jharkhand Three) Private Limited
RENEWURJA_SLR	ReNew Solar Urja Private Limited
RGPPL_IR	Ratnagiri Gas and Power Private Ltd., supply to Indian Railways
RGPPL_OTHER	Ratnagiri Gas and Power Private Limited
RISING_SLR	Rising Sun Energy Pvt. Ltd.
RLDC	Regional Load Dispatch Centre
RONGNICHU HEP	Rongnichu Hydro Electric Power Project
RPREL	Raipur Energen Limited
RSTPS_FSPP	NTPC Ramagundam STPS- Floating Solar PV Project
RTC	Round The Clock
RTM	Real Time Market
SasanUMPP	Sasan Ultra Mega Power Project
SB_SLR	Soft Bank Solar
SB6_POKARAN	SB Energy Six Private Limited, Pokaran
SBG CLEANTECH_SLR	SBG Cleantech Ltd
SBG_NPK	SB Energy Solar Private Limited,NP Kunta
SBG_PVGD	SB Energy Solar Private Limited,Pavagada
SBSR_SLR	SBSR Power Cleantech Eleven Private Limited
SEMBCORP	Sembcorp Gayatri Power Ltd
SIMHAPURI	Simhapuri Energy Private Limited
SKS Power	SKS Power Generation Chhattisgarh Limited
SESPL	Srijan Energy Systems Pvt. Ltd.
SINGOLI BHATWARI HEP	Singoli-Bhatwari Hydroelectric Project, Uttarakhand
SKRPL	Sitac Kabini Renewables Pvt. Ltd.
SPRNG_NPKUNTA	Sprng Energy, NP Kunta
SPRING_PUGALUR	Spring Solar Power Private Limited, Pugalur



SUL	Sikkim Urja Limited
TALA HEP	Tala Hydroelectric Project, Bhutan
TASHIDENG HEP	Tashiding Hydro Electric Project, Sikkim
TATA_ANTP	TATA Power Anantapur
TATA_PVGD	Tata Power Renewable Energy Ltd
TATA_SLR	Tata Solar
TAM	Term Ahead Market
TEESTA STG3	Teesta Stage 3 Hydro Power Project
TEHRI	Tehri Hydro Electric Power Project
TESPL	Transition Energy Services Private Limited
THAR1_SLR	Thar Surya Ravi One Pvt Ltd
THERMAL POWERTECH	Thermal Powertech Corporation India Limited
TPREL_RADHANESDA	Tata Power Renewable Energy Limited, Radhanesda
TPS	Thermal Power Station
TPSL	TP Saurya Limited
VINDHYACHAL HVDC	Vindhyachal High Voltage Direct Current Link
WA	Weighted Average
YARROW_PVGD	Yarrow Infra Structure Private Ltd

## 1. Introduction

1.1. A well-functioning electricity market requires an effective market monitoring process. The monthly report on short-term transactions of electricity, published by CERC since 2008 as part of its market monitoring process, provides a snapshot of key aspects of short-term transactions of electricity in India. Here, “short-term transactions of electricity” refers to the contracts of less than one year period for electricity transacted (inter-State) - through Trading Licensees, directly between entities and on Power Exchanges (Indian Energy Exchange Ltd. (IEX), Power Exchange India Ltd. (PXIL) and Hindustan Power Exchange Ltd. (HPX)). “DSM Volume” includes the volume recorded under Deviation Settlement Mechanism. The main objectives of the report are: (i) to analyse the volume and price of the short-term transactions of electricity; (ii) to assess the competition among the market players; (iii) to analyse the effect of congestion on the volume of electricity transacted through power exchanges; (iv) to provide information on volume and price of Renewable Energy Certificates (RECs) transacted through power exchanges; and (v) to disseminate all other relevant market information. The analysis of short-term transactions of electricity and DSM volume during the month of **January 2025** is presented in the following sections.

## 2. Volume of Short-term Transactions of Electricity and DSM

2.1. During January 2025, total electricity generation, excluding generation from renewable and captive power plants in India, was 125832.14 MU (Table-1). Of the total electricity generation, 15.09% was transacted through short-term and DSM, comprising 7.75% through power exchanges {Day Ahead Market (DAM) (including G-DAM & HP-DAM) and Real Time Market (RTM)}, followed by 5.25% through bilateral (through Traders and Term-Ahead contracts on power exchanges, and directly between entities), and 2.09% through DSM (Table-1 & Figure-1).

2.2. Of the total short-term transactions and DSM volume (18989.85 MU<sup>1</sup>), 51.37% was transacted through power exchanges {DAM (including G-DAM & HP-DAM) and RTM}, followed by 34.80% through bilateral<sup>2</sup> (i.e., through Traders, Term-Ahead contracts on power exchanges and directly between entities), and 13.83% through DSM (Table-1 & Figure-2). The

---

<sup>1</sup> Volume here has been finalised in consultation with Grid India, after resolving issues that emerged post implementation of GNA Regulations and transition to new WBES software by Grid India.

<sup>2</sup> includes bilateral short-term transactions under GNA and T-GNA

daily volume of short-term transactions is shown in Table-30. Figure-4 shows the daily volume trend for short-term transactions and DSM volume.

2.3. Of the total volume of electricity transacted through power exchanges, 53.40% of the volume was transacted in DAM (including G-DAM & HP-DAM), followed by 24.19% in RTM and 22.41% in Term Ahead Market (TAM) (including G-TAM & HP-TAM) (Figure-3).

2.4. The share of electricity traded by each trading licensee is given in Table-2 & Figure-5 shows the share of the top 5 trading licensees. The volume of electricity transacted by the trading licensees includes bilateral transactions and transactions undertaken through power exchanges. There were 66 trading licensees as of January 2025. Of these, 36 trading licensees were engaged in short-term trading. The top 5 trading licensees, namely PTC India Ltd., Powerpulse Trading Solutions Ltd., NTPC Vidyut Vyapar Nigam Ltd., Tata Power Trading Company (P) Ltd., and Manikaran Power Ltd., had a share of 84.45% in the total volume of electricity traded by all the licensees.

2.5. Herfindahl-Hirschman Index (HHI), a commonly accepted index to calculate market concentration, has been used to measure competition among trading licensees. An increase in the HHI generally indicates a decrease in competition and an increase in market concentration, and vice versa. The HHI below 0.15 indicates non-concentration, the HHI between 0.15 and 0.25 indicates moderate concentration, and the HHI above 0.25 indicates high concentration. The HHI has been computed based on the volume of electricity traded (inter-State & intra-State) by inter-State trading licensees, and it was 0.2034 for the month of January 2025, which indicates the moderate concentration of market power (Table-2).

2.6. The volume of electricity transacted in the DAM of IEX, PXIL and HPX was 6017.39 MU, 2.09 MU and 0.01 MU, respectively. The volume of total buy bids and sell bids was 9619.10 MU and 13099.98 MU, respectively in IEX; 134.45 MU and 160.31 MU, respectively, in PXIL; and 0.43 MU and 74.08 MU, respectively in HPX.

2.7. Of the total volume of electricity transacted in the DAM of IEX, the volume purchased by the neighbouring countries, including Nepal and Bhutan, was 339.00 MU (Table-37(a)), while no volume was sold by the neighbouring countries, under the Cross Border Trade of electricity through power exchanges. No Cross Border transaction of electricity was undertaken through PXIL and HPX.

2.8. The volume of electricity transacted in the G-DAM of IEX was 694.59 MU, while no electricity was transacted in the G-DAM of PXIL and HPX. The volume of total buy bids and sell bids was 2785.63 MU and 1045.46 MU, respectively, in IEX. While the volume of buy bids was 77.43 MU, no sell bids were received in PXIL. No bids were received in HPX.

2.9. No electricity was transacted in the HP-DAM of IEX, PXIL, and HPX. While no buy bids were received in IEX, the volume of total sell bids was 2641.14 MU. No bids were received in PXIL and HPX.

2.10. The volume of electricity transacted in the RTM of IEX, PXIL and HPX was 3035.92 MU, 5.11 MU, and 0.65 MU, respectively. The volume of total buy bids and sell bids was 5318.65 MU and 7311.70 MU, respectively in IEX; 6.91 MU and 7.67 MU, respectively, in PXIL; and 0.83 MU and 0.95 MU, respectively in HPX. The variation in the volume of buy bids and sell bids placed through power exchanges shows variation in the demand and supply position.

2.11. Of the total volume of electricity transacted in the RTM of IEX, the volume sold by the neighbouring countries, including Nepal and Bhutan, of India was 0.59 MU, and the volume purchased was 48.07 MU, under the Cross Border Trade of electricity through power exchanges (Table-37(b)). No Cross Border transaction of electricity was undertaken through PXIL and HPX.

2.12. The volume of electricity transacted in the TAM of IEX, PXIL, and HPX was 1107.09 MU, 1063.17 MU, and 445.25 MU, respectively (Table-9, Table-10 & Table-11). The volume of electricity transacted in the Green Term Ahead Market (G-TAM) of IEX, PXIL and HPX was 50.28 MU, 77.63 MU, and 71.26 MU, respectively (Table-12, Table-13 & Table-14).

2.13. The volume of electricity transacted in the HP-TAM of PXIL was 2.34 MU (Table-16). No electricity was transacted in HP-TAM of IEX and HPX (Table-15 & Table-17).

### **3. Price of Short-term Transactions of Electricity and DSM charges**

3.1. *Price of electricity transacted through Traders:* The minimum, maximum and weighted average sale prices for the electricity transacted through traders were ₹2.69/kWh, ₹8.00/kWh and ₹5.75/kWh, respectively (Table-3). The weighted average sale prices were also

computed for the electricity transacted during Round the Clock (RTC), Peak and Off-peak periods separately, and the sale prices were ₹5.36/kWh, ₹5.54/kWh and ₹6.35/kWh, respectively (Table-4).

3.2. **Price of electricity transacted through Power Exchanges:** The minimum, maximum, and weighted average prices for the electricity transacted in the DAM of IEX were ₹1.62/kWh, ₹10.00/kWh, and ₹4.40/kWh, respectively. These prices in the DAM of PXIL were ₹4.58/kWh, ₹10.00/kWh, and ₹9.95/kWh, respectively. These prices in the DAM of HPX were ₹10.00/kWh, ₹10.00/kWh, and ₹10.00/kWh, respectively (Table-5). The minimum, maximum, and weighted average prices for the electricity transacted in the G-DAM of IEX were ₹2.24/kWh, ₹10.00/kWh, and ₹4.64/kWh, respectively (Table-6). The minimum, maximum, and weighted average prices for the electricity transacted in the RTM of IEX were ₹0.50/kWh, ₹10.00/kWh, and ₹4.23/kWh, respectively. These prices in the RTM of PXIL were ₹10.00/kWh, ₹10.00/kWh, and ₹10.00/kWh, respectively. These prices in the RTM of HPX were ₹10.00/kWh, ₹10.00/kWh, and ₹10.00/kWh, respectively (Table-8). The weighted average price of electricity transacted in the TAM of IEX, PXIL, and HPX was ₹5.30/kWh, ₹5.93/kWh and ₹6.44/kWh, respectively (Table-9, Table-10, and Table-11). The weighted average price of electricity transacted in the G-TAM of IEX, PXIL, and HPX was ₹4.99/kWh, ₹5.12/kWh and ₹5.41/kWh, respectively (Table-12, Table-13 and Table-14). The weighted average price of electricity transacted in the HP-TAM of PXIL was ₹19.91/kWh (Table-16). No electricity was transacted in HP-DAM & HP-TAM of IEX; in G-DAM & HP-DAM of PXIL; and in G-DAM, HP-DAM & HP-TAM of HPX.

3.3. **DSM Charges:** The minimum, maximum and average charges under DSM was ₹2.06/kWh, ₹15.36/kWh and ₹5.03/kWh, respectively (Table-33).

3.4. The comparison of weighted average prices of electricity transacted through trading licensees and power exchanges (collective transactions) is shown in Figure-6. The daily prices of electricity transacted through various segments (collective transactions) at power exchanges and their comparison are shown in Table-31(a), (b), (c) & (d) and Figure-7. The daily volume and charges under DSM are shown in Table-33.

#### **4. Trading Margin**

4.1. As per the CERC (Procedure, Terms, and Conditions for grant of trading licence and other related matters) Regulations 2020, the trading licensees are allowed to charge a trading margin of not less than 0 paise/kWh and up to 7 paise/kWh. The weighted average trading margin charged by the trading licensees for bilateral transactions during the month was ₹0.017/kWh.

## **5. Volume of Short-term Transactions of Electricity (Regional Entity<sup>3</sup>-Wise)**

5.1. Of the total bilateral transactions, the top 5 regional entities/states sold 38.49% of the volume. These were Uttar Pradesh, Punjab, SKS Power Generation Chhattisgarh Ltd., Haryana and Jindal Power Limited Stage-II. The HHI for sellers was 0.0486, which indicates non-concentration of the market (Table-18). The top 5 regional entities/states purchased 50.16% of the volume, and these were Madhya Pradesh, Rajasthan, Maharashtra, Himachal Pradesh, and Delhi. The HHI for buyers was 0.0783, which indicates the non-concentration of the market (Table-19).

5.2. Of the total DAM transactions at power exchanges, the top 5 regional entities/states sold 34.40% of the volume, and these were Jindal Power Limited Stage-II, Uttar Pradesh, Adani Power Limited-Raipur TPP, Adani Power Limited - Raigarh TPP, and Mahan Energen Limited Unit 2. The HHI for sellers in DAM was 0.0388, which indicates the non-concentration of the market (Table-20). The top 5 regional entities/states purchased 70.41% of the volume, and these were Telangana, Gujarat, Maharashtra, Uttar Pradesh, and Punjab. The HHI for buyers in DAM was 0.1760, which indicates a moderate concentration of the market (Table-21).

5.3. Of the total G-DAM transactions at power exchanges, the top 5 regional entities/states sold 58.29% of the volume, and these were Karnataka, Adani Renewable Energy Holding Four Ltd. (PSS-1), Adani Renewable Energy Forty One Ltd. (PSS-3), Adani Green Energy Twenty Five B Ltd. (PSS-2), and Adani Wind Energy Kutchh Four Ltd. Nakhatrana. The HHI for sellers in G-DAM was 0.1517, which indicates a moderate concentration of the market (Table-22). The top 5 regional entities/states purchased 68.75% of the volume, and these were Damodar Valley Corporation, Maharashtra, Arcelor Mittal Nippon Steel Hazira, Gujarat and Odisha. The HHI for buyers in G-DAM was 0.1232, which indicates non-concentration of the market (Table-23).

---

<sup>3</sup> In case of a State, the entities which are “selling” also include generators connected to State Grid and the entities which are “buying” also include open access consumers.

5.4. No volume was traded in HP-DAM of all three power exchanges.

5.5. Of the total RTM transactions at power exchanges, the top 5 regional entities/states sold 37.65% of the volume, and these were Bihar, Tamil Nadu, Odisha, Madhya Pradesh, and Uttar Pradesh. The HHI for sellers in RTM was 0.0433, which indicates the non-concentration of market (Table-26). The top 5 regional entities/states purchased 63.44% of the volume, and these were Punjab, Telangana, Maharashtra, Uttar Pradesh and Kerala. The HHI for buyers in RTM was 0.1134, which indicates non-concentration of the market (Table-27).

5.6. The total volume of net short-term transactions of electricity (Regional entity-wise), i.e., the volume of net transactions through bilateral and power exchanges, is shown in Table-28 & 32. The top 5 electricity selling regional entities/states of short-term transactions were Uttar Pradesh, Jindal Power Limited Stage-II, Adani Power Limited-Raipur TPP, Bihar, and Jaypee Nigrie Super Thermal Power Plant. The top 5 electricity purchasing regional entities/states of short-term transactions were Telangana, Maharashtra, Gujarat, Madhya Pradesh, and Rajasthan.

5.7. Of the total under-drawal/ over-injection volume under DSM in January 2025, the top 5 regional entities/states accounted for 17.32% of the volume, and these were Bihar, Maharashtra, Odisha, Altra Xergi Power Private Limited, and Tamil Nadu (Table-34). The top 5 regional entities/states under DSM accounted for 21.73% of the total over-drawal/ under-injection volume, and these were Rajasthan, Gujarat, Tamil Nadu, Madhya Pradesh, and Punjab (Table-35).

## **6. Congestion<sup>4</sup> on Inter-State Transmission Corridor for Day-Ahead Market (including Green DAM and High Price DAM) and Real Time Market on Power Exchanges**

6.1. Power exchanges use a price discovery mechanism in which the aggregate demand and supply are matched to arrive at an unconstrained market price and volume. This process assumes that there is no congestion in the inter-State transmission system between different regions. However, in reality, the system operator (NLDC), in coordination with RLDCs, limits

---

<sup>4</sup> “Congestion” means a situation where the demand for transmission capacity exceeds the available transfer capability

the flow (due to congestion) in the inter-State transmission system. In such a situation, power exchanges adopt a mechanism called “Market Splitting”<sup>5</sup>.

6.2. The volume of electricity that could not be cleared due to congestion & other reasons and could not be transacted through power exchanges is the difference between unconstrained cleared volume and actual cleared volume. During the month of January 2025, no congestion was experienced in any of the power exchanges (Table-29).

## **7. Volume and Price of Renewable Energy Certificates (RECs)**

7.1. The concept of Renewable Energy Certificates (RECs) seeks to address the mismatch between the availability of renewable energy and the requirement of the obligated entities to meet their renewable purchase obligation by purchasing green attributes of renewable energy remotely located in the form of RECs. The REC mechanism is a market-based instrument to promote renewable sources of energy and the development of the electricity market.

7.2. One REC is equivalent to 1 MWh of electricity injected into the grid from renewable energy sources. The REC is exchanged only in the power exchanges approved by CERC within the band of a floor price and forbearance (ceiling) price as notified by CERC from time to time. The first REC trading was held on power exchanges in May 2011.

7.3. The categorisation of RECs has been dispensed with on introduction of the concept of multiplier under the CERC (Terms and Conditions for Renewable Energy Certificates for Renewable Energy Generation) Regulations, 2022, brought into effect from 05.12.2022. Accordingly, the power exchanges deactivated the Solar and Non-Solar REC contract for trading w.e.f. December 2022. A new contract named “REC” has been made available for trading on the power exchanges. Further, RECs can also be exchanged through trading licensees as per the REC Regulations 2022.

---

<sup>5</sup>“Market Splitting” is a mechanism adopted by Power Exchanges, where the market is split in the event of transmission congestion, into predetermined (by NLDC) bid areas or zones, which are cleared individually at their respective area prices such that the energy balance in every bid area is reached based upon the demand and supply in individual bid areas and using the available transmission corridor capacity between various bid areas simultaneously. As a result of this market splitting the price of electricity in the importing region, where demand for electricity is more than supply, becomes relatively higher than the price of electricity in the exporting region.



7.4. The details of REC transactions for the month of January 2025 are shown in Table-36. The market clearing volume of RECs transacted on IEX, PXIL, and HPX was 3803073, 2529749 and 210927, respectively. The weighted average market clearing price of these RECs was ₹330/MWh in IEX, ₹328/MWh in PXIL, and ₹350/MWh in HPX.

7.5. The gap between the volume of buy and sell bids of RECs placed through power exchanges shows the variation in demand for the RECs. The ratio of buy bids to sell bids was 0.67, 0.61 and 0.15 in IEX, PXIL, and HPX, respectively.

7.6. The volume of RECs transacted through Trading Licensees in January 2025 was 712432. The weighted average trade price for the RECs transacted through traders was ₹328/MWh.

## **8. Inferences:**

- a) The percentage of short-term transactions of electricity and DSM volume to total electricity generation was 15.09%.
- b) Of the total short-term transactions and DSM volume (18989.85 MU), 51.37% was transacted through power exchanges {DAM (including G-DAM & HP-DAM) and RTM}, followed by 34.80% through bilateral (i.e., through Traders, Term-Ahead contracts on power exchanges and directly between entities), and 13.83% through DSM.
- c) Of the total volume of electricity transacted through power exchanges, 53.40% of the volume was transacted in DAM (including G-DAM & HP-DAM), followed by 24.19% in RTM and 22.41% in Term Ahead Market (TAM) (including G-TAM & HP-TAM).
- d) The top 5 trading licensees had a share of 84.45% in the total volume traded by all the trading licensees.
- e) The Herfindahl Hirschman Index computed for the volume of electricity traded by trading licensees was 0.2034, indicating the moderate concentration of market power.
- f) The weighted average sale price of electricity transacted through trading licensees was ₹5.75/kWh.
- g) The weighted average price of electricity transacted in DAM of IEX, PXIL, and HPX was ₹4.40/kWh, ₹9.95/kWh, and ₹10.00/kWh, respectively. The weighted average price of

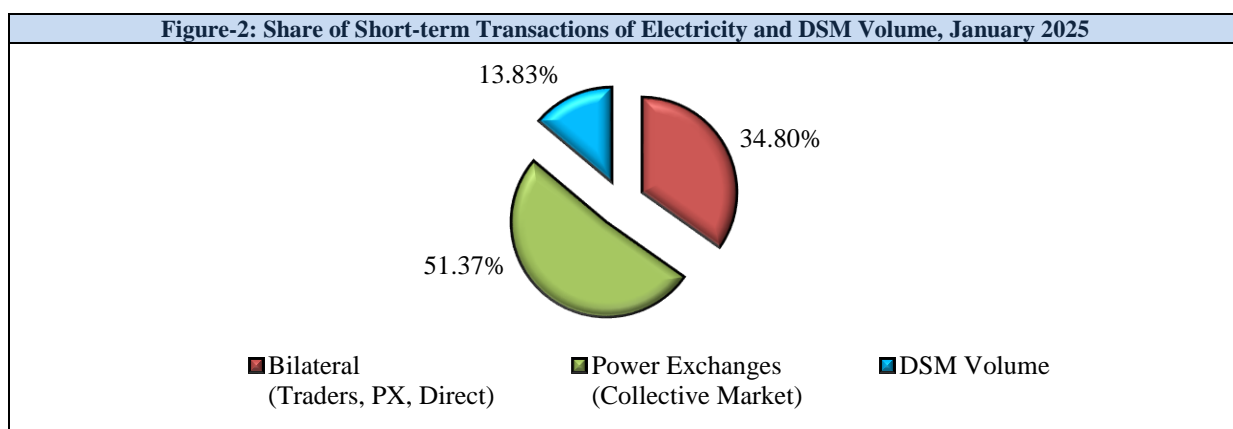
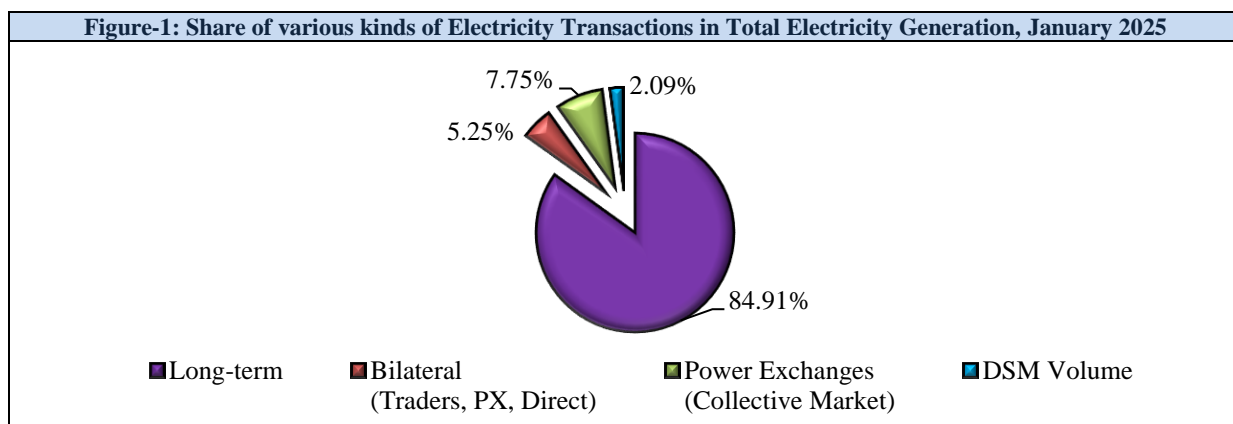
electricity transacted in G-DAM of IEX was ₹4.64/kWh, while no electricity was transacted in G-DAM of PXIL and HPX. No electricity was transacted in HP-DAM of all the three power exchanges. The weighted average price of electricity transacted in the RTM of IEX, PXIL and HPX was ₹4.23/kWh, ₹10.00/kWh and ₹10.00/kWh, respectively.

- h) The weighted average price of electricity transacted in TAM of IEX, PXIL, and HPX was ₹5.30/kWh, ₹5.93/kWh, and ₹6.44/kWh, respectively. The weighted average price of electricity transacted in G-TAM of IEX, PXIL, and HPX was ₹4.99/kWh, ₹5.12/kWh, and ₹5.41/kWh, respectively. The weighted average price of electricity transacted in HP-TAM of PXIL was ₹19.91/kWh. No electricity was traded in HPTAM of IEX and HPX.
- i) The average charge under DSM was ₹5.03/kWh.
- j) The weighted average trading margin charged by the trading licensees for bilateral transactions was ₹0.017/kWh.
- k) The top 5 electricity selling regional entities/states of short-term transactions were Uttar Pradesh, Jindal Power Limited Stage-II, Adani Power Limited-Raipur TPP, Bihar, and Jaypee Nigrie Super Thermal Power Plant. The top 5 electricity purchasing regional entities/states of short-term transactions were Telangana, Maharashtra, Gujarat, Madhya Pradesh, and Rajasthan.
- l) The top 5 under-drawing/ over-injecting regional entities/states under DSM were Bihar, Maharashtra, Odisha, Altra Xergi Power Private Limited, and Tamil Nadu. The top 5 over-drawing/ under-injecting regional entities/states under DSM were Rajasthan, Gujarat, Tamil Nadu, Madhya Pradesh, and Punjab.
- m) During January 2025, no congestion was experienced in any of the power exchanges.
- n) The market clearing volume of RECs transacted on IEX, PXIL, and HPX was 3803073, 2529749 and 210927, respectively. The weighted average market clearing price of these RECs was ₹330/MWh in IEX, ₹328/MWh in PXIL, and ₹350/MWh in HPX. The volume of RECs transacted through Trading Licensees in January 2025 was 712432. The weighted average trade price for the RECs transacted through traders was ₹328/MWh.

\*\*\*

<b>Table-1: VOLUME OF SHORT-TERM TRANSACTIONS OF ELECTRICITY AND DSM (ALL INDIA), JANUARY 2025</b>				
<b>Sr. No</b>	<b>Transaction</b>	<b>Volume (MU)</b>	<b>% to short-term transactions and DSM Volume</b>	<b>% to Total Generation</b>
<b>A</b>	<b>Short-term transactions</b>			
1	Bilateral <sup>6</sup> (Traders, PX, Direct)	<b>6607.83</b>	<b>34.80</b>	<b>5.25</b>
2	Power Exchanges (Collective Market)	<b>9755.76</b>	<b>51.37</b>	<b>7.75</b>
	(i) IEX			
	(a) DAM	6017.39	31.69	4.78
	(b) RTM	3035.92	15.99	2.41
	(c) GDAM	694.59	3.66	0.55
	(d) HP-DAM	0.00	0.00	0.00
	(ii) PXIL			
	(a) DAM	2.09	0.01	0.002
	(b) RTM	5.11	0.03	0.004
	(c) GDAM	0.00	0.00	0.00
	(d) HP-DAM	0.00	0.00	0.00
	(ii) HPX			
	(a) DAM	0.01	0.0001	0.00001
	(b) RTM	0.65	0.003	0.0005
	(c) GDAM	0.00	0.00	0.00
	(d) HP-DAM	0.00	0.00	0.00
<b>B</b>	<b>Through DSM</b>	<b>2626.26</b>	<b>13.83</b>	<b>2.09</b>
<b>Total Short-term transactions and DSM<sup>7</sup></b>		<b>18989.85</b>	<b>-</b>	<b>15.09</b>
<b>Total Generation</b>		<b>125832.14</b>	<b>-</b>	<b>-</b>

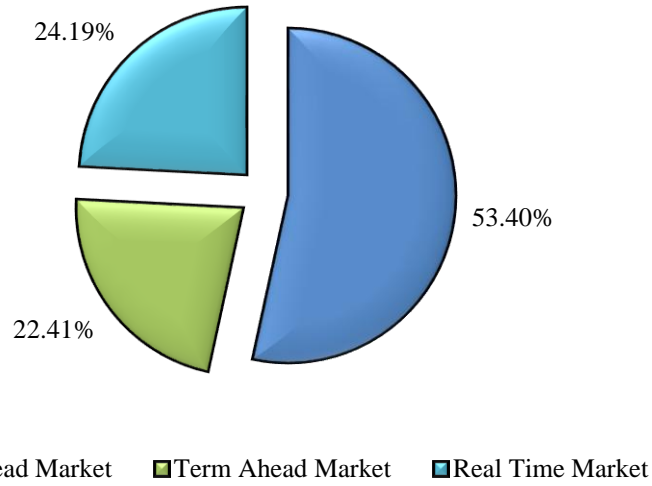
Source: NLDC



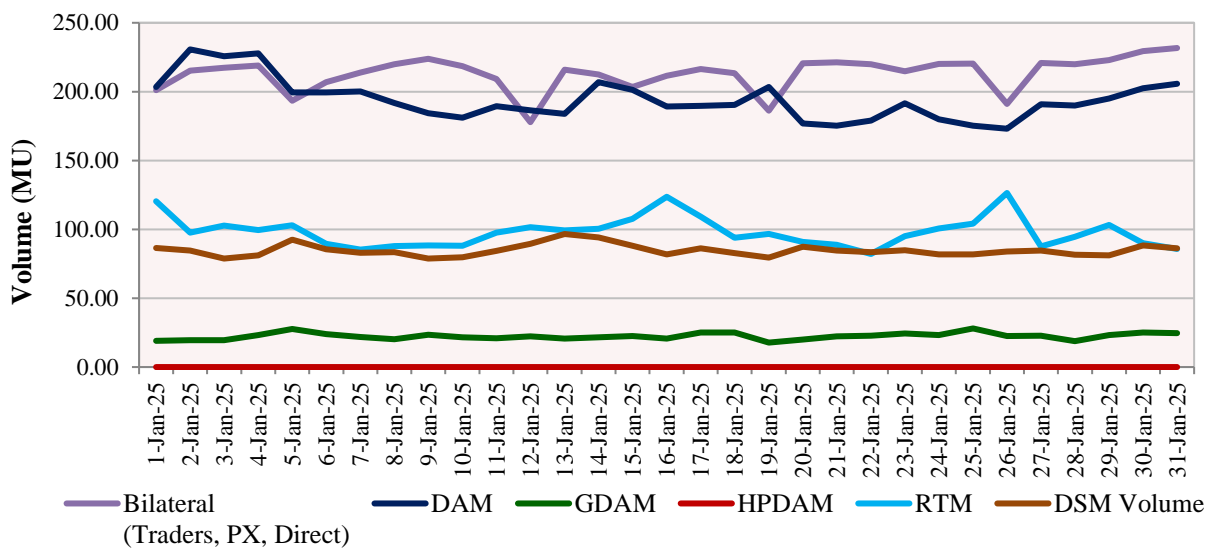
<sup>6</sup> includes bilateral short-term transactions under GNA and T-GNA

<sup>7</sup> Volume here has been finalized in consultation with Grid India, after resolving issues that emerged post implementation of GNA Regulations and transition to new WBES software by Grid India.

**Figure-3: Share of volume transacted in different market segments on Power Exchanges, January 2025**



**Figure-4: Volume of Short-term transactions and DSM Volume, January 2025 (Day-wise)**



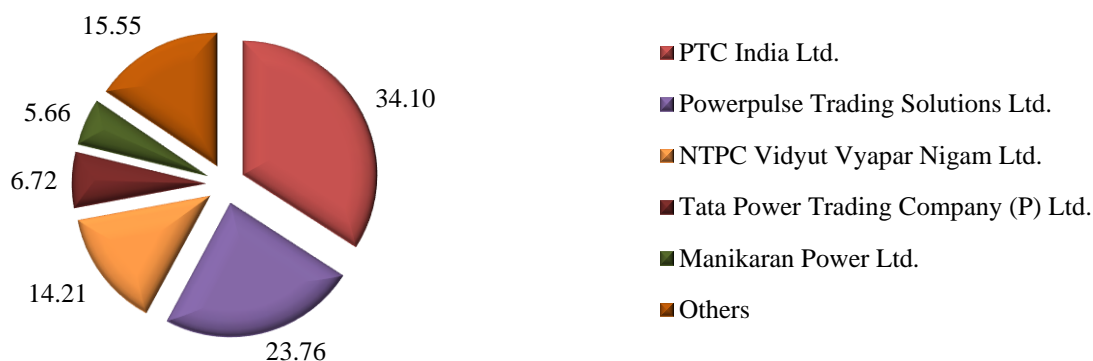
**Table-2: PERCENTAGE SHARE OF ELECTRICITY TRANSACTED BY TRADING LICENSEES, JANUARY 2025**

Sr. No	Name of the Trading Licensee	% Share in total Volume traded by Trading Licensees
1	PTC India Ltd.	34.10
2	Powerpulse Trading Solutions Ltd.	23.76
3	NTPC Vidyut Vyapar Nigam Ltd.	14.21
4	Tata Power Trading Company (P) Ltd.	6.72
5	Manikaran Power Ltd.	5.66
6	Arunachal Pradesh Power Corporation (P) Ltd	3.06
7	JSW Power Trading Company Ltd	2.84
8	GMR Energy Trading Ltd.	2.43
9	Kreate Energy (I) Pvt. Ltd.	1.05
10	Instinct Infra & Power Ltd.	0.70
11	Gita Power & Infrastructure Private Limited	0.70
12	Abja Power Private Limited	0.64
13	Ideal Energy Solution Pvt. Ltd.	0.62
14	RPG Power Trading Company Ltd.	0.58
15	NEFA Power Trading Pvt. Ltd.	0.52
16	Energedge Power Trading Pvt. Ltd.	0.46
17	Greenko Energies Pvt Ltd	0.34
18	Reneysys Solar Pvt. Ltd.	0.31
19	Saranyu Power Trading Private Limited	0.20
20	NLC India Ltd.	0.17
21	Statkraft Markets Pvt. Ltd.	0.14
22	Instant Ventures Pvt. Ltd.	0.13
23	Kundan International Pvt. Ltd.	0.12
24	SJVN Ltd.	0.10
25	Adarsh Stainless Pvt. Ltd.	0.07
26	Elsa Consultancy	0.07
27	Saini Power Transactor	0.07
28	Powerfull Energy Trading Pvt. Ltd.	0.07
29	Shubheksha Advisors Pvt. Ltd.	0.04
30	Phillip Commodities India (P) Ltd.	0.03
31	Customized Energy Solutions India (P) Ltd.	0.03
32	REL Power Trading LLP	0.03
33	Shree Cement Ltd.	0.02
34	Refex Industries Ltd.	0.003
35	Shell Energy Marketing and Trading India Pvt. Ltd.	0.001
36	Altium Energie Private Limited	0.0002
<b>TOTAL</b>		<b>100.00%</b>
<b>Top 5 trading licensees</b>		<b>84.45%</b>
<b>Herfindahl-Hirschman Index (HHI)</b>		<b>0.2034</b>

*Note: Volume of electricity transacted by the trading licensees includes bilateral transactions (inter-state & intra-state) and the transactions undertaken through power exchanges.*

*Source: Information submitted by trading licensees*

**Figure 5: Percentage Share of Electricity Transacted by Trading Licensees, January 2025**



**Table-3: PRICE OF ELECTRICITY TRANSACTED THROUGH TRADERS, JANUARY 2025**

Sr.No	Item	Sale Price of Traders (₹/kWh)
1	Minimum	2.69
2	Maximum	8.00
3	Weighted Average	5.75

Source: Information submitted by trading licensees

**Table-4: PRICE OF ELECTRICITY TRANSACTED THROUGH TRADERS (TIME-WISE), JANUARY 2025**

Sr.No	Period of Trade	Sale Price of Traders (₹/kWh)
1	RTC	5.36
2	PEAK	5.54
3	OFF PEAK	6.35

Source: Information submitted by trading licensees

**Table-5: PRICE OF ELECTRICITY TRANSACTED IN DAY AHEAD MARKET, JANUARY 2025**

Sr.No	ACP	Price in IEX (₹/kWh)	Price in PXIL (₹/kWh)	Price in HPX (₹/kWh)
1	Minimum	1.62	4.58	10.00
2	Maximum	10.00	10.00	10.00
3	Weighted Average	4.40	9.95	10.00

Source: IEX, PXIL and HPX

**Table-6: PRICE OF ELECTRICITY TRANSACTED IN GREEN DAY AHEAD MARKET, JANUARY 2025**

Sr.No	ACP	Price in IEX (₹/kWh)	Price in PXIL (₹/kWh)	Price in HPX (₹/kWh)
1	Minimum	2.24	-	-
2	Maximum	10.00	-	-
3	Weighted Average	4.64	-	-

Source: IEX, PXIL and HPX

**Table-7: PRICE OF ELECTRICITY TRANSACTED IN HIGH PRICE DAY AHEAD MARKET, JANUARY 2025**

Sr.No	ACP	Price in IEX (₹/kWh)	Price in PXIL (₹/kWh)	Price in HPX (₹/kWh)
1	Minimum	-	-	-
2	Maximum	-	-	-
3	Weighted Average	-	-	-

Source: IEX, PXIL and HPX

**Table-8: PRICE OF ELECTRICITY TRANSACTED IN REAL TIME MARKET, JANUARY 2025**

Sr.No	ACP	Price in IEX (₹/kWh)	Price in PXIL (₹/kWh)	Price in HPX (₹/kWh)
1	Minimum	0.50	10.00	10.00
2	Maximum	10.00	10.00	10.00
3	Weighted Average	4.23	10.00	10.00

Source: IEX, PXIL and HPX

**Table-9: VOLUME AND PRICE OF ELECTRICITY IN TERM AHEAD MARKET OF IEX, JANUARY 2025**

Sr.No	Term ahead contracts	Actual Scheduled Volume (MU)	Weighted Average Price (₹/kWh)
1	Intra-Day Contracts	0.50	7.00
2	Day Ahead Contingency Contracts	122.58	8.05
3	Daily Contracts	585.14	4.90
4	Monthly Contracts	130.20	4.55
5	Any Day Single Sided Contracts	268.67	5.29
	<b>Total</b>	<b>1107.09</b>	<b>5.30</b>

Source: IEX

<b>Table-10: VOLUME AND PRICE OF ELECTRICITY IN TERM AHEAD MARKET OF PXIL, JANUARY 2025</b>			
<b>Sr.No</b>	<b>Term ahead contracts</b>	<b>Actual Scheduled Volume (MU)</b>	<b>Weighted Average Price (₹/kWh)</b>
1	Intra-Day Contracts	8.35	8.76
2	Day Ahead Contingency Contracts	285.85	6.28
3	Daily Contracts	231.95	6.62
4	Any Day Single Sided Contracts	537.02	5.40
	<b>Total</b>	<b>1063.17</b>	<b>5.93</b>

Source: PXIL

<b>Table-11: VOLUME AND PRICE OF ELECTRICITY IN TERM AHEAD MARKET OF HPX, JANUARY 2025</b>			
<b>Sr.No</b>	<b>Term ahead contracts</b>	<b>Actual Scheduled Volume (MU)</b>	<b>Weighted Average Price (₹/kWh)</b>
1	Intra-Day Contracts	2.88	8.07
2	Day Ahead Contingency Contracts	93.75	8.94
3	Daily Contracts	142.31	6.57
4	Monthly Contracts	37.20	4.25
5	Any Day Single Sided Contracts	169.12	5.39
	<b>Total</b>	<b>445.25</b>	<b>6.44</b>

Source: HPX

<b>Table-12: VOLUME AND PRICE OF ELECTRICITY IN GREEN TAM OF IEX, JANUARY 2025</b>			
<b>Sr. No</b>	<b>Green Term ahead contracts</b>	<b>Actual Scheduled Volume (MU)</b>	<b>Weighted Average Price (₹/kWh)</b>
1	Day Ahead Contingency Contracts	1.86	5.93
2	Daily Contracts	16.96	5.05
3	Any Day Single Sided Contracts	31.46	4.90
	<b>Total</b>	<b>50.28</b>	<b>4.99</b>

Source: IEX

<b>Table-13: VOLUME AND PRICE OF ELECTRICITY IN GREEN TAM OF PXIL, JANUARY 2025</b>			
<b>Sr. No</b>	<b>Green Term ahead contracts</b>	<b>Actual Scheduled Volume (MU)</b>	<b>Weighted Average Price (₹/kWh)</b>
1	Day Ahead Contingency Contracts	1.17	5.67
2	Daily Contracts	7.44	4.40
3	Any Day Single Sided Contracts	69.02	5.19
	<b>Total</b>	<b>77.63</b>	<b>5.12</b>

Source: PXIL

<b>Table-14: VOLUME AND PRICE OF ELECTRICITY IN GREEN TAM OF HPX, JANUARY 2025</b>			
<b>Sr. No</b>	<b>Green Term ahead contracts</b>	<b>Actual Scheduled Volume (MU)</b>	<b>Weighted Average Price (₹/kWh)</b>
1	Day Ahead Contingency Contracts	43.02	5.11
2	Daily Contracts	6.50	9.50
3	Monthly Contracts	12.28	4.54
4	Any Day Single Sided Contracts	9.46	5.05
	<b>Total</b>	<b>71.26</b>	<b>5.41</b>

Source: HPX

<b>Table-15: VOLUME AND PRICE OF ELECTRICITY IN HIGH PRICE TAM OF IEX, JANUARY 2025</b>			
<b>Sr. No</b>	<b>High Price Term ahead contracts</b>	<b>Actual Scheduled Volume (MU)</b>	<b>Weighted Average Price (₹/kWh)</b>
1	No Trade	0.00	-
	<b>Total</b>	<b>0.00</b>	<b>-</b>

Source: IEX

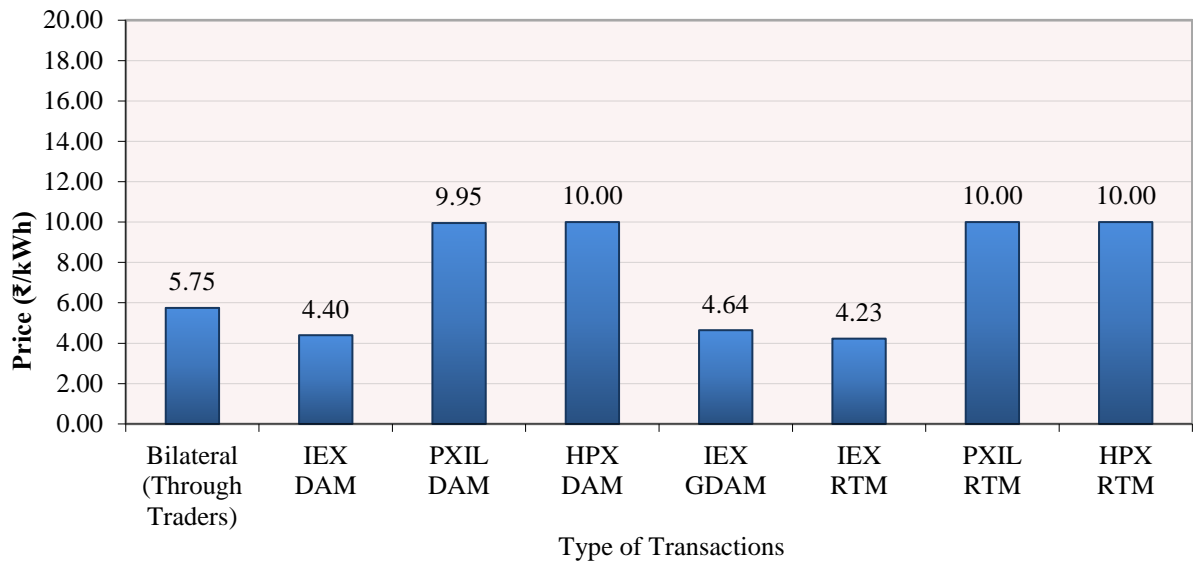
<b>Table-16: VOLUME AND PRICE OF ELECTRICITY IN HIGH PRICE TAM OF PXIL, JANUARY 2025</b>			
<b>Sr. No</b>	<b>High Price Term ahead contracts</b>	<b>Actual Scheduled Volume (MU)</b>	<b>Weighted Average Price (₹/kWh)</b>
1	Intra-Day Contracts	2.34	19.91
	<b>Total</b>	<b>2.34</b>	<b>19.91</b>

Source: PXIL

<b>Table-17: VOLUME AND PRICE OF ELECTRICITY IN HIGH PRICE TAM OF HPX, JANUARY 2025</b>			
<b>Sr. No</b>	<b>High Price Term ahead contracts</b>	<b>Actual Scheduled Volume (MU)</b>	<b>Weighted Average Price (₹/kWh)</b>
1	No Trade	0.00	-
	<b>Total</b>	<b>0.00</b>	<b>-</b>

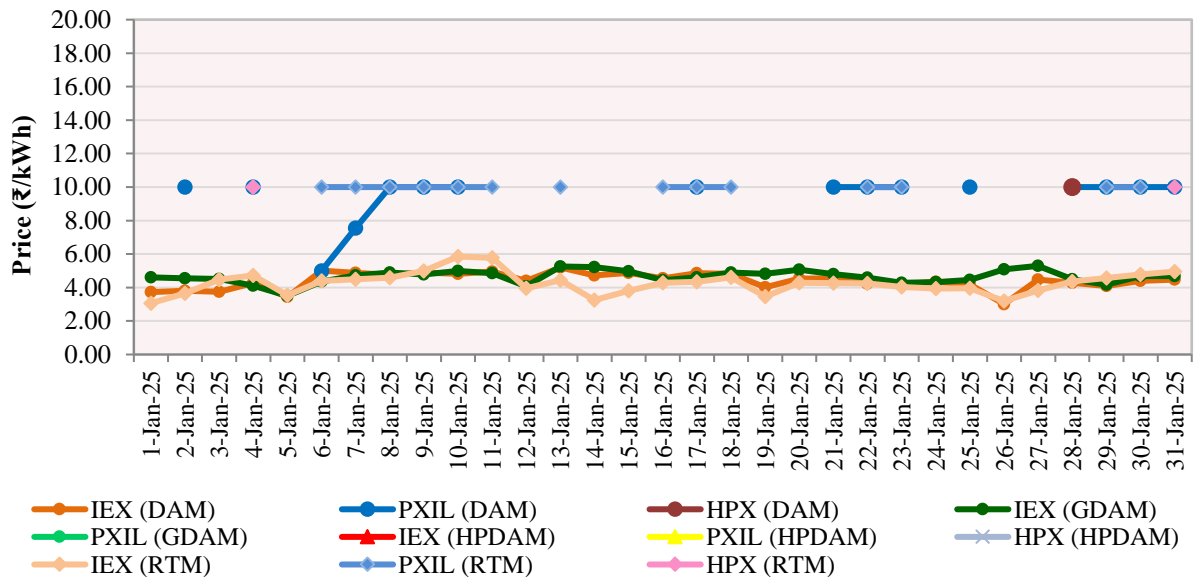
Source: HPX

**Figure-6: Weighted Average Price of Short-term Transactions of Electricity, January 2025**



*Note: No electricity was transacted in G-DAM of PXIL & HPX, and in HP-DAM of all power exchanges during January 2025*

**Figure-7: Weighted Average Price of Short-term Transactions of Electricity, January 2025 (Day-wise)**



*Note: No electricity was transacted in G-DAM of PXIL & HPX, and in HP-DAM of all power exchanges during January 2025*



**Table-18: VOLUME OF ELECTRICITY SOLD THROUGH BILATERAL, JANUARY 2025**

<b>Name of the Entity</b>	<b>Volume of Sale (MU)</b>	<b>% of Volume</b>
Uttar Pradesh	943.17	14.27
Punjab	778.08	11.78
SKS Power Generation Chhattisgarh Limited	292.71	4.43
Haryana	280.97	4.25
Jindal Power Limited, Stage-2	248.36	3.76
Jaypee Nigrie Super Thermal Power Plant	234.21	3.54
Telangana	190.02	2.88
Odisha	189.90	2.87
MB POWER (MADHYA PRADESH) LIMITED	156.27	2.36
Adani Power Limited-Raipur TPP	151.52	2.29
Jindal India Thermal Power Limited	134.65	2.04
Adani Hybrid Solar Energy Jaisalmer Four Limited	129.20	1.96
Karnataka	118.66	1.80
Andhra Pradesh	118.34	1.79
IND BARATH ENERGY UTKAL LIMITED	118.05	1.79
Damodar Valley Corporation	112.85	1.71
RKM POWER	112.77	1.71
Madhya Pradesh	94.69	1.43
ADANI HYBRID WIND ENERGY JAISALMER FOUR LIMITED	91.73	1.39
DHARIWAL STU MH	90.92	1.38
SIMHAPURI(SEPL)	88.86	1.34
MAHAN ENERGEN LIMITED U#2	84.02	1.27
Jindal Power Limited, Stage-1	73.67	1.11
West Bengal	71.65	1.08
Chhattisgarh	71.31	1.08
Bihar	70.54	1.07
DB Power	69.70	1.05
ADANI RENEWABLE ENERGY HOLDING FOUR LIMITED PSS-1	62.08	0.94
Gujarat	57.85	0.88
Renew Sun wave Pvt. Ltd. Fatehgarh2	57.44	0.87
Rajasthan	57.30	0.87
Azure Power Forty One Private Limited	56.64	0.86
ACME DEOGHAR SOLAR POWER PRIVATE LIMITED	56.56	0.86
THAR SURYA 1 PRIVATE LIMITED	50.91	0.77
Eden Renewable Cite Private Limited	50.58	0.77
Maharashtra	49.98	0.76
Azure Power Forty Three Private Limited	47.19	0.71
SHREE CEMENT LIMITED TPS	45.47	0.69
R.K.M POWERGEN PRIVATE LIMITED	45.34	0.69
MAHAN ENERGEN LIMITED U#1	44.43	0.67
Mega Suryaurja Pvt Ltd	43.63	0.66
Jindal India Power Limited	38.80	0.59
Avaada RJHN Private Limited	38.61	0.58
Jhabua Power Limited	37.53	0.57
ACB (INDIA) LIMITED	37.51	0.57
TATA POWER GREEN ENERGY LIMITED	35.84	0.54
Sembcorp Energy India Limited Project II	33.87	0.51
SEIL ENERGY INDIA LIMITED	33.16	0.50
ReNew Solar Urja Pvt Ltd	32.52	0.49
Serentica Renewables India 1 Private Limited	31.63	0.48
TATA POWER Renewable Energy Limited (CHHAYAN)	28.33	0.43
Avaada Sustainable RJProject Private Limited	26.69	0.40
SB Energy Six Private Limited	26.42	0.40
Delhi	24.91	0.38
Iron Renewable Power Limited	22.75	0.34
TRN ENERGY PRIVATE LIMITED	22.08	0.33
RENEW SURYA VIHAAN PRIVATE LIMITED	19.00	0.29
ABC RENEWABLE ENERGY PRIVATE LIMITED	18.92	0.29

ACME DHAULPUR POWERTECH PRIVATE LIMITED	18.87	0.29
ReNew Surya Roshni Pvt Ltd	18.39	0.28
Maruti Clean Coal and Power Limited	14.30	0.22
Meghalaya	13.45	0.20
D B Power Limited	12.04	0.18
BHARAT ALUMINIUM COMPANY LTD	10.83	0.16
TPSL 200MW TPTCL Banderwala	10.60	0.16
BALCO_CTU	10.16	0.15
CONTINUUM POWER TRADING (TN) PRIVATE LIMITED	10.09	0.15
Tamil Nadu	10.09	0.15
TPSL Banderwala SECI 100_INF	9.14	0.14
Adani Solar Energy Four Private Limited	8.81	0.13
OSTRO KANNADA POWER PRIVATE LIMITED	8.68	0.13
Adani Solar Energy Jaisalmer Two Private Limited	8.55	0.13
ReNew Surya Ravi Private Limited	8.06	0.12
JUNIPER GREEN COSMIC PRIVATE LIMITED	7.72	0.12
IGSTPS JHAJJAR	7.51	0.11
Ramagundam Floating solar	6.37	0.10
SEMBCORP ENERGY INDIA LIMITED	5.96	0.09
SEIL Energy India Limited Project II	5.45	0.08
SEMBCORP GREEN INFRA PRIVATE LIMITED (INFIRM)	5.19	0.08
SIMHAPURI ENERGY LIMITED	4.04	0.06
Uttarakhand	3.91	0.06
AVAADA SUNRAYS ENERGY PRIVATE LIMITED	3.85	0.06
Singoli Bhatwari HEP	3.40	0.05
Dikchu Hydro Electric Project (Sneha Kinetic Power Projects Pvt. Ltd.)	2.67	0.04
Arunachal Pradesh	2.64	0.04
HIMACHAL PRADESH	2.34	0.04
ADANI WIND ENERGY KUTCHH FOUR Ltd. Nakhatrana	2.12	0.03
AMBUJA CEMENTS LIMITED_PSS3	2.08	0.03
Adani Power Limited - Raigarh TPP	2.06	0.03
Jammu Kashmir	2.03	0.03
KARCHAM WANGTOO HYDRO ELECTRIC PLANT.	2.02	0.03
Dhariwal ISTS	1.97	0.03
Adani Renewable Energy Fifty Five Limited_PSS3 (25 MW Hybrid Solar of 25 MW of 187.5MW HPD)	1.87	0.03
SINGRAULI SOLAR	1.64	0.02
Adani Renewable Energy Forty One Limited_PSS-3	1.33	0.02
DADRI	1.03	0.02
GMR Warora Energy Limited	0.97	0.01
Adani Renewable Energy Fifty Five Limited_PSS3 (20.8 MW Hybrid Wind of 25 MW of 187.5 MW HPD)	0.76	0.01
Kawas	0.71	0.01
UNCHAHAR SOLAR	0.66	0.01
Tripura	0.60	0.01
DADRI_SOLAR	0.39	0.01
Kerala	0.38	0.01
Gandhar	0.29	0.004
COASTAL ENERGEN PRIVATE LIMITED	0.28	0.004
DHARIWAL STU OTH	0.24	0.004
ANTA	0.17	0.003
Ayana Renewable Power Three Private Limited_INF	0.16	0.002
AURAIYA	0.14	0.002
<b>Total</b>	<b>6607.83</b>	<b>100.00</b>
<b>Volume Sold by top 5 Regional Entities</b>	<b>2543.29</b>	<b>38.49</b>
<b>Herfindahl-Hirschman Index</b>		<b>0.0486</b>

Source: NLDC

**Table-19: VOLUME OF ELECTRICITY PURCHASED THROUGH BILATERAL, JANUARY 2025**

<b>Name of the Entity</b>	<b>Volume of Purchase (MU)</b>	<b>% of Volume</b>
Madhya Pradesh	1085.02	16.42
Rajasthan	760.89	11.51
Maharashtra	583.96	8.84
HIMACHAL PRADESH	456.91	6.91
Delhi	427.86	6.47
Jammu Kashmir	427.40	6.47
Tamil Nadu	422.51	6.39
Uttarakhand	388.91	5.89
Karnataka	356.55	5.40
Kerala	284.82	4.31
Gujarat	244.18	3.70
Odisha	224.08	3.39
Haryana	190.30	2.88
Andhra Pradesh	165.54	2.51
Damodar Valley Corporation	105.03	1.59
Bihar	84.70	1.28
NEA - Bihar STU	64.44	0.98
Uttar Pradesh	56.09	0.85
Goa WR	41.78	0.63
Meghalaya	38.81	0.59
Jharkhand	33.55	0.51
COASTAL ENERGEN PRIVATE LIMITED	33.41	0.51
BHARAT ALUMINIUM COMPANY LTD (Bulk Consumer)	31.63	0.48
AMNSIL_WR_State	28.30	0.43
Arunachal Pradesh	21.41	0.32
Pondicherry UT	18.92	0.29
Druk Green Power Corporation Limited (DGPCL-Bhutan)	7.72	0.12
Chandigarh (UT)	7.20	0.11
MAHAN ENERGEN LIMITED U#2	6.59	0.10
Chhattisgarh	5.80	0.09
Assam	1.07	0.02
West Bengal	0.93	0.01
Mizoram	0.60	0.01
Sikkim	0.48	0.01
Telangana	0.43	0.01
<b>TOTAL</b>	<b>6607.83</b>	<b>100.00</b>
<b>Volume Purchased by top 5 Regional Entities</b>	<b>3314.63</b>	<b>50.16</b>
<b>Herfindahl-Hirschman Index</b>		<b>0.0783</b>

Source: NLDC

**Table-20: VOLUME OF ELECTRICITY SOLD IN DAY AHEAD MARKET THROUGH POWER EXCHANGES, JANUARY 2025**

<b>Name of the Entity</b>	<b>Volume of Sale (MU)</b>	<b>% of Volume</b>
Jindal Power Limited, Stage-2	615.21	10.22
Uttar Pradesh	498.55	8.28
Adani Power Limited-Raipur TPP	424.61	7.05
Adani Power Limited - Raigarh TPP	281.56	4.68
MAHAN ENERGEN LIMITED U#2	250.96	4.17
West Bengal	249.13	4.14
Odisha	241.16	4.01
Haryana	230.00	3.82
Jindal Power Limited, Stage-1	214.42	3.56
Jaypee Nigrie Super Thermal Power Plant	199.14	3.31
Bihar	178.17	2.96
Delhi	153.31	2.55
Jindal India Thermal Power Limited	138.87	2.31
Assam	129.93	2.16
Chhattisgarh	120.34	2.00
SEIL ENERGY INDIA LIMITED	109.95	1.83
Adani Renewable Energy Holding Four Limited_PSS-1	79.60	1.32
MAHAN ENERGEN LIMITED U#1	75.96	1.26
IND BARATH ENERGY UTKAL LIMITED	73.35	1.22
Jindal Steel & Power Ltd , DCP	72.26	1.20
Madhya Pradesh	71.11	1.18
Karnataka	67.82	1.13
Tamil Nadu	66.65	1.11
D B Power Limited	63.46	1.05
Andhra Pradesh	59.53	0.99
Uttarakhand	58.69	0.98
Adani Green Energy Twenty Five B Limited_PSS-2	52.88	0.88
Rajasthan	52.40	0.87
NABINAGAR POWER GENERATING COMPANY LIMITED	48.98	0.81
NTPC BARH Stage II	43.07	0.72
Telangana	41.15	0.68
SIMHAPURI ENERGY LIMITED	39.66	0.66
ACB (INDIA) LIMITED	38.85	0.65
NTPC Farakka stage I	38.47	0.64
Maharashtra	34.95	0.58
SHREE CEMENT LIMITED TPS	33.65	0.56
Adani Green Energy Twenty Five A Limited_PSS-2	33.05	0.55
Gujarat	31.91	0.53
Goa WR	31.21	0.52
RENEW SURYA PRATAP PRIVATE LIMITED	30.05	0.50
ADANI WIND ENERGY KUTCHH FOUR Ltd. Nakhatrana	28.65	0.48
ADANI GREEN ENERGY TWENTY FIVE LIMITED	26.56	0.44
SEIL Energy India Limited Project II	26.41	0.44
COASTAL ENERGEN PRIVATE LIMITED	24.05	0.40
BHARAT ALUMINIUM COMPANY LTD	22.92	0.38
Damodar Valley Corporation	21.67	0.36
ADANI GREEN ENERGY TWENTY FOUR LIMITED	21.38	0.36
ADANI RENEWABLE ENERGY FIFTY FIVE LIMITED_PSS-3 (162.5 MW Hybrid Solar of 187.5MW HPD)	20.55	0.34
Kerala	20.55	0.34
ReNew Surya Ravi Private Limited	19.86	0.33
Government of Himachal Pradesh_NJHPS	19.63	0.33
Adani Solar Energy Jaisalmer Two Private Limited (Project-2)	19.34	0.32
TRN ENERGY PRIVATE LIMITED	18.65	0.31

SKS Power Generation Chhattisgarh Limited	16.82	0.28
ADANI SOLAR ENERGY RJ TWO PRIVATE LIMITED	15.73	0.26
R.K.M POWERGEN PRIVATE LIMITED	15.70	0.26
Palatana Plant	15.41	0.26
Jhabua Power Limited	15.27	0.25
KARCHAM WANGTOO HYDRO ELECTRIC PLANT.	14.14	0.23
Amp Energy Green Six Private Limited	14.03	0.23
ADANI RENEWABLE ENERGY FORTY ONE LIMITED_PSS-3	12.47	0.21
NTPP BRBCL	12.39	0.21
Himachal Pradesh	12.34	0.21
AD HYDRO POWER LIMITED	12.02	0.20
NTPC Dadri Stage I	11.66	0.19
KANTI BIJLEE UTPADAN NIGAM LIMITED	11.59	0.19
Adani Green Energy Twenty Four A Limited_PSS-3	10.78	0.18
Chandigarh (UT)	10.35	0.17
NTPC Talcher Stage I	10.08	0.17
KSK MAHANADI POWER COMPANY LIMITED	9.84	0.16
Maruti Clean Coal and Power Limited	9.68	0.16
Jharkhand	9.36	0.16
Adani Green Energy Twenty Six B Limited_PSS-2	9.10	0.15
Adept Renewable Technologies Private Limited	8.83	0.15
Tripura	8.20	0.14
Government of Himachal Pradesh_Koldam HEP	8.18	0.14
ADANI SOLAR ENERGY JODHPUR TWO LIMITED	7.78	0.13
NTPC Gadarwara	7.01	0.12
The Tata Power Co Ltd (MTPS)	6.97	0.12
Jammu Kashmir	6.88	0.11
NTPC Farakka stage III	6.52	0.11
Dhariwal ISTS	6.25	0.10
NTPC Solapur	6.06	0.10
GMR Warora Energy Limited	5.81	0.10
Government of Himachal Pradesh_RampurHEP	5.76	0.10
Adani Renewable Energy Forty Eight Limited (Wind)_PSS-9	5.52	0.09
NTPC North Karanpura STPS	5.03	0.08
Pondicherry UT	4.99	0.08
DHARIWAL STU OTH	4.81	0.08
NTPC khargone	4.72	0.08
Nagaland	4.43	0.07
NTPC Dadri Stage II	4.27	0.07
Meghalaya	4.11	0.07
Singoli Bhatwari HEP	3.80	0.06
Ramagundam Floating solar	3.72	0.06
NTPC Vindhyachal Stage II	3.70	0.06
Government of Himachal Pradesh _ Chamera1HEP	3.53	0.06
NTPC KUDGI	3.41	0.06
NTPC Vindhyachal Stage III	3.34	0.06
WIND FIVE RENERGY LIMITED	3.22	0.05
NTPC Kahalgaon stage I	3.03	0.05
Sainj HEP	3.03	0.05
JUNIPER GREEN COSMIC PRIVATE LIMITED	2.93	0.05
MB POWER (MADHYA PRADESH) LIMITED	2.91	0.05
NTPC Kahalgaon stage II	2.90	0.05
TPSL 200MW TPTCL Banderwala	2.84	0.05
Government of Himachal Pradesh_ CHAMERA2HEP	2.75	0.05
OSTRO KANNADA POWER PRIVATE LIMITED	2.31	0.04
Government of Himachal Pradesh _ Chamera3HEP	2.22	0.04
NTPC Vindhyachal Stage I	2.09	0.03

Dikchu Hydro Electric Project (Sneha Kinetic Power Projects Pvt. Ltd.)	2.06	0.03
GMR KAMALANGA ENERGY LTD-CTU	1.54	0.03
IL&FS TAMIL NADU POWER COMPANY LIMITED	1.53	0.03
NTPC BARH Stage I	1.50	0.02
ADANI GREEN ENERGY TWENTY SIX A LIMITED_PSS-3	1.48	0.02
NTPC Ramagundam Stage I &II	1.47	0.02
NTPC Vindhyachal Stage V	1.41	0.02
Government of Himachal Pradesh_Bairasuil HEP	1.26	0.02
Government of Himachal Pradesh_Parbat3HEP	1.16	0.02
NTPC Mouda Stage II	1.09	0.02
Simhadri FSP 15 MW	1.08	0.02
NTPC Sipat Stage I	1.01	0.02
NLC Tamilnadu Power Limited	1.00	0.02
NTPC Unchahar Stage IV	0.93	0.02
Mizoram	0.88	0.01
Serentica Renewables India 5 Private Limited	0.81	0.01
Sorang HEP (Himachal Sorang Power Pvt. Ltd.)	0.78	0.01
NTPC SOLAPUR SOLAR PV Station	0.78	0.01
AMBUJA CEMENTS LIMITED_PSS3	0.77	0.01
Simhadri Floating solar (10 MW)	0.70	0.01
NTPC Mouda Stage I	0.70	0.01
NTPC Korba Stage I &II	0.68	0.01
Transition Energy Services Private Limited	0.67	0.01
TPSL Banderwala SECI 100_INF	0.65	0.01
IGSTPS JHAJJAR	0.60	0.01
Budhil HEP (Greenko Budhil Hydro Power Pvt. Ltd.)	0.59	0.01
Bongaigaon Thermal Power Station NTPC	0.53	0.01
NTPC Sipat Stage II	0.50	0.01
NTPC Vindhyachal Stage IV	0.45	0.01
Transition Green Energy Private Limited	0.45	0.01
Arunachal Pradesh	0.39	0.01
NTPC Unchahar Stage I	0.36	0.01
NTPC Lara Stage I	0.34	0.01
NTPC Ramagundam Stage III	0.34	0.01
Adani Ports and Special Economic Zone Limited (PSS-3)	0.33	0.01
Transition Sustainable Energy Services One Private Limited	0.28	0.005
NTPC Tanda Stage II	0.25	0.004
NTPC Korba Stage III	0.23	0.004
NTPC Simhadri Stage II	0.22	0.004
NTPC Darlipali	0.22	0.004
NTPC Unchahar Stage III	0.20	0.003
NTPC Unchahar Stage II	0.19	0.003
ADANI RENEWABLE ENERGY FIFTY FIVE LIMITED_PSS3 (25 MW Hybrid Solar of 25 MW of 187.5MW HPD)	0.08	0.001
ADANI RENEWABLE ENERGY FIFTY FIVE LIMITED_PSS3 (20.8 MW Hybrid Wind of 25 MW of 187.5MW HPD)	0.04	0.001
NTPC Rihand stage II	0.03	0.0004
NTPC Rihand stage I	0.02	0.0004
NTPC Rihand stage III	0.02	0.0003
NLC INDIA LIMITED NEYVELI NEW TPS	0.01	0.0001
NTPC Singrauli	0.01	0.0001
NTPC Talcher Super Thermal Power Station Stage II	0.001	0.00001
<b>Total</b>	<b>6019.49</b>	<b>100.00</b>
<b>Volume sold by top 5 Regional Entities</b>	<b>2070.88</b>	<b>34.40</b>
<b>Herfindahl-Hirschman Index</b>		<b>0.0388</b>

Source: NLDC

**Table-21: VOLUME OF ELECTRICITY PURCHASED IN DAY AHEAD MARKET THROUGH POWER EXCHANGES, JANUARY 2025**

Name of the Entity	Volume of Purchase (MU)	% of Volume
Telangana	2192.41	36.42
Gujarat	965.62	16.04
Maharashtra	484.17	8.04
Uttar Pradesh	338.75	5.63
Punjab	257.55	4.28
Andhra Pradesh	230.41	3.83
Tamil Nadu	210.13	3.49
Druk Green Power Corporation Limited (DGPCL-Bhutan)	188.74	3.14
Delhi	134.59	2.24
Kerala	113.47	1.89
Uttarakhand	104.99	1.74
Karnataka	86.62	1.44
Jammu Kashmir	84.95	1.41
ArcelorMittal Nippon Steel India Limited	79.38	1.32
NEPAL ELECTRICITY AUTHORITY MUZAFFARPUR	77.58	1.29
Odisha	69.95	1.16
West Bengal	65.50	1.09
Meghalaya	53.95	0.90
Madhya Pradesh	32.61	0.54
NEA - Bihar STU	31.92	0.53
Rajasthan	30.40	0.50
Daman and Diu - Dadra and Nagar Haveli	29.85	0.50
Himachal Pradesh	28.06	0.47
NEA - UP STU	27.66	0.46
Damodar Valley Corporation	27.26	0.45
NEPAL ELECTRICITY AUTHORITY TANAKPUR	13.11	0.22
Chandigarh (UT)	12.00	0.20
Haryana	8.73	0.15
Jharkhand	8.68	0.14
Chhattisgarh	8.23	0.14
North Central Railway Prayagraj	8.04	0.13
MB POWER (MADHYA PRADESH) LIMITED	6.33	0.11
Arunachal Pradesh	3.27	0.05
Nagaland	2.72	0.05
Goa SR	1.05	0.02
Bihar	0.52	0.01
Tripura	0.22	0.004
BHARAT ALUMINIUM COMPANY LTD (Bulk Consumer)	0.03	0.001
Goa WR	0.02	0.0004
Pondicherry UT	0.01	0.0002
<b>TOTAL</b>	<b>6019.49</b>	<b>100.00</b>
<b>Volume purchased by top 5 Regional Entities</b>	<b>4238.50</b>	<b>70.41</b>
<b>Herfindahl-Hirschman Index</b>		<b>0.1760</b>

Source: NLDC

**Table-22: VOLUME OF ELECTRICITY SOLD IN GREEN DAY AHEAD MARKET THROUGH POWER EXCHANGES, JANUARY 2025**

<b>Name of the Entity</b>	<b>Volume of Sale (MU)</b>	<b>% of Volume</b>
Karnataka	251.90	36.27
ADANI RENEWABLE ENERGY HOLDING FOUR LIMITED_PSS-1	60.39	8.69
ADANI RENEWABLE ENERGY FORTY ONE LIMITED_PSS-3	32.17	4.63
Adani Green Energy Twenty Five B Limited_PSS-2	31.10	4.48
ADANI WIND ENERGY KUTCHH FOUR Ltd. Nakhatrana	29.32	4.22
Adani Green Energy Twenty Five A Limited_PSS-2	19.96	2.87
ADANI GREEN ENERGY TWENTY FIVE LIMITED	16.06	2.31
Madhya Pradesh	15.67	2.26
Adani Renewable Energy Forty Eight Limited (Wind)_PSS-9	15.46	2.23
ADANI PORTS AND SPECIAL ECONOMIC ZONE LIMITED (PSS-3)	15.11	2.17
Maharashtra	14.31	2.06
Jammu Kashmir	13.82	1.99
Uttar Pradesh	13.63	1.96
ADANI GREEN ENERGY TWENTY FOUR LIMITED	13.48	1.94
ADANI RENEWABLE ENERGY FIFTY FIVE LIMITED_PSS-3 (162.5 MW Hybrid Solar of 187.5MW HPD)	12.78	1.84
Bihar	11.83	1.70
Himachal Pradesh	11.30	1.63
TPSL 200MW TPTCL Banderwala	10.42	1.50
Andhra Pradesh	8.78	1.26
AMBUJA CEMENTS LIMITED_PSS3	8.03	1.16
ADANI SOLAR ENERGY RJ TWO PRIVATE LIMITED	7.84	1.13
OSTRO KANNADA POWER PRIVATE LIMITED	6.71	0.97
Adani Green Energy Twenty Four A Limited_PSS-3	6.49	0.93
Serentica Renewables India 5 Private Limited	5.87	0.85
Sorang HEP (Himachal Sorang Power Pvt. Ltd.))	5.60	0.81
Adani Green Energy Twenty Six B Limited_PSS-2	5.42	0.78
ReNew Surya Ravi Private Limited	5.16	0.74
Meghalaya	5.07	0.73
Rajasthan	5.03	0.72
Sikkim	4.09	0.59
Transition Sustainable Energy Services One Private Limited	3.76	0.54
West Bengal	3.45	0.50
Transition Energy Services Private Limited	3.08	0.44
WIND FIVE RENERGY LIMITED	3.08	0.44
Transition Green Energy Private Limited	2.84	0.41
Singoli Bhatwari HEP	2.63	0.38
CONTINUUM POWER TRADING (TN) PRIVATE LIMITED	2.19	0.32
TPSL Banderwala SECI 100_INF	1.89	0.27
Haryana	1.37	0.20
Uttarakhand	1.24	0.18
ADANI SOLAR ENERGY JAISALMER TWO PRIVATE LIMITED(Project-2)	1.08	0.16
ADANI GREEN ENERGY TWENTY SIX A LIMITED_PSS-3	0.93	0.13



ADANI RENEWABLE ENERGY FIFTY FIVE LIMITED_PSS3 (25 MW Hybrid Solar of 25 MW of 187.5MW HPD)	0.92	0.13
Telangana	0.90	0.13
ADANI RENEWABLE ENERGY FIFTY FIVE LIMITED_PSS3 (20.8 MW Hybrid Wind of 25 MW of 187.5MW HPD)	0.80	0.11
ADANI SOLAR ENERGY JODHPUR TWO LIMITED	0.46	0.07
JUNIPER GREEN COSMIC PRIVATE LIMITED	0.44	0.06
Ramagundam Floating solar	0.41	0.06
Simhadri FSP 15 MW	0.14	0.02
Simhadri Floating solar (10 MW)	0.09	0.01
NTPC SOLAPUR SOLAR PV Station	0.07	0.01
AM GREEN ENERGY PRIVATE LIMITED Wind	0.003	0.0004
<b>Total</b>	<b>694.59</b>	<b>100.00</b>
<b>Volume sold by top 5 Regional Entities</b>	<b>404.88</b>	<b>58.29</b>
<b>Herfindahl-Hirschman Index</b>		<b>0.1517</b>

Source: NLDC

**Table-23: VOLUME OF ELECTRICITY PURCHASED IN GREEN DAY AHEAD MARKET THROUGH POWER EXCHANGES, JANUARY 2025**

<b>Name of the Entity</b>	<b>Volume of Purchase (MU)</b>	<b>% of Volume</b>
Damodar Valley Corporation	171.69	24.72
Maharashtra	82.31	11.85
Arcelor Mittal Nippon Steel India Limited	76.70	11.04
Gujarat	76.21	10.97
Odisha	70.62	10.17
Tamil Nadu	55.55	8.00
Haryana	39.47	5.68
Jharkhand	24.89	3.58
Chhattisgarh	19.54	2.81
Delhi	18.68	2.69
Madhya Pradesh	10.98	1.58
Telangana	10.31	1.48
Kerala	10.09	1.45
Karnataka	9.48	1.36
Uttar Pradesh	6.51	0.94
Goa SR	4.35	0.63
Andhra Pradesh	4.04	0.58
Punjab	1.19	0.17
North Central Railway Prayagraj	1.05	0.15
West Bengal	0.33	0.05
Daman and Diu - Dadra and Nagar Haveli	0.21	0.03
Uttarakhand	0.13	0.02
Goa WR	0.11	0.02
BHARAT ALUMINIUM COMPANY LTD (Bulk Consumer)	0.10	0.01
Meghalaya	0.05	0.01
Pondicherry UT	0.003	0.0005
<b>TOTAL</b>	<b>694.59</b>	<b>100.00</b>
<b>Volume purchased by top 5 Regional Entities</b>	<b>477.53</b>	<b>68.75</b>
<b>Herfindahl-Hirschman Index</b>		<b>0.1232</b>

Source: NLDC

**Table-24: VOLUME OF ELECTRICITY SOLD IN HIGH PRICE DAY AHEAD MARKET THROUGH POWER EXCHANGES, JANUARY 2025**

<b>Name of the Entity</b>	<b>Volume of Sale (MU)</b>	<b>% of Volume</b>
No Trade	0.00	-
<b>TOTAL</b>	<b>0.00</b>	<b>0.00</b>
<b>Volume sold by top 5 Regional Entities</b>	<b>0.00</b>	<b>-</b>
<b>Herfindahl-Hirschman Index</b>		<b>-</b>

Source: NLDC

**Table-25: VOLUME OF ELECTRICITY PURCHASED IN HIGH PRICE DAY AHEAD MARKET THROUGH POWER EXCHANGES, JANUARY 2025**

<b>Name of the Entity</b>	<b>Volume of Purchase (MU)</b>	<b>% of Volume</b>
No Trade	0.00	-
<b>TOTAL</b>	<b>0.00</b>	<b>0.00</b>
<b>Volume purchased by top 5 Regional Entities</b>	<b>0.00</b>	<b>-</b>
<b>Herfindahl-Hirschman Index</b>		<b>-</b>

Source: NLDC

**Table-26: VOLUME OF ELECTRICITY SOLD IN REAL TIME MARKET THROUGH POWER EXCHANGES, JANUARY 2025**

<b>Name of the Entity</b>	<b>Volume of Sale (MU)</b>	<b>% of Volume</b>
Bihar	391.94	12.89
Tamil Nadu	260.53	8.57
Odisha	172.15	5.66
Madhya Pradesh	167.54	5.51
Uttar Pradesh	152.98	5.03
Haryana	135.46	4.45
Rajasthan	122.70	4.03
West Bengal	116.42	3.83
Jharkhand	92.57	3.04
Chhattisgarh	90.03	2.96
Delhi	89.90	2.96
Assam	71.60	2.35
Telangana	56.00	1.84
Andhra Pradesh	46.73	1.54
Karnataka	39.49	1.30
Maharashtra	38.86	1.28
Damodar Valley Corporation	32.00	1.05
Pondicherry UT	31.65	1.04
Uttarakhand	28.81	0.95
BHARAT ALUMINIUM COMPANY LTD	28.19	0.93
NTPC Singrauli	23.78	0.78
TRN ENERGY PRIVATE LIMITED	23.78	0.78
COASTAL ENERGEN PRIVATE LIMITED	19.76	0.65
The Tata Power Co Ltd (MTPS)	18.92	0.62
Gujarat	18.35	0.60
NABINAGAR POWER GENERATING COMPANY LIMITED	18.33	0.60
Jindal Power Limited, Stage-2	17.82	0.59
SKS Power Generation Chhattisgarh Limited	17.01	0.56
NTPC Kahalgaon stage II	15.76	0.52
Kerala	15.62	0.51
Jhabua Power Limited	15.23	0.50
AGARTALA GAS BASED POWER STATION	14.69	0.48
Jammu Kashmir	14.55	0.48
Tripura	14.52	0.48
Adani Power Limited-Raipur TPP	13.51	0.44
NTPC Rihand stage III	13.38	0.44
Serentica Renewables India 5 Private Limited	13.06	0.43
SEIL ENERGY INDIA LIMITED	12.66	0.42
NTPP BRBCL	12.29	0.40
ReNew Surya Ravi Private Limited	12.07	0.40
NTPC Gadarwara	11.38	0.37
KHURJA STPP	10.98	0.36
NTPC Farakka stage I	10.92	0.36
NTPC Rihand stage I	10.09	0.33
NTPC khargone	9.98	0.33
Himachal Pradesh	9.93	0.33
NTPC North Karanpura STPS	9.76	0.32
NTPC Mouda Stage II	9.57	0.31
Jindal Power Limited, Stage-1	9.56	0.31
ADANI RENEWABLE ENERGY FORTY ONE LIMITED_PSS-3	9.26	0.30
MAHAN ENERGEN LIMITED U#1	9.24	0.30
NTPC Vindhyachal Stage III	9.00	0.30
NTPC Vindhyachal Stage IV	8.96	0.29

NTPC Vindhyachal Stage I	8.73	0.29
RENEW SURYA PRATAP PRIVATE LIMITED	8.72	0.29
NTPC Dadri Stage I	8.61	0.28
KAMENG HYDRO POWER STATION	8.46	0.28
Adept Renewable Technologies Private Limited	8.43	0.28
ADANI WIND ENERGY KUTCHH FOUR Ltd. Nakhatrana	8.34	0.27
SEIL Energy India Limited Project II	8.34	0.27
MEENAKSHI ENERGY LIMITED	8.21	0.27
NLC INDIA LIMITED NEYVELI NEW THERMAL POWER STATION	8.16	0.27
Sasan Power Limited	8.13	0.27
ADANI RENEWABLE ENERGY HOLDING FOUR LIMITED_PSS-1	8.10	0.27
NTPC Vindhyachal Stage II	8.07	0.27
NTPC Rihand stage II	7.95	0.26
SIMHAPURI ENERGY LIMITED	7.68	0.25
NTPC Solapur	7.40	0.24
NTPC Mouda Stage I	7.37	0.24
JUNIPER GREEN COSMIC PRIVATE LIMITED	6.95	0.23
Transition Green Energy Private Limited	6.92	0.23
MAITHON POWER LIMITED	6.64	0.22
NTPC Ramagundam Stage I &II	6.53	0.21
OSTRO KANNADA POWER PRIVATE LIMITED	6.43	0.21
D B Power Limited	6.35	0.21
Manipur	6.22	0.20
NTPC KUDGI	6.08	0.20
Onevolt Energy Private Limited	6.01	0.20
NTECL VALLUR	6.01	0.20
ADANI GREEN ENERGY TWENTY FIVE LIMITED	5.95	0.20
MAHAN ENERGEN LIMITED U#2	5.61	0.18
NREL-Dayapar Wind	5.38	0.18
Adani Green Energy Twenty Five B Limited_PSS-2	5.35	0.18
Arunachal Pradesh	5.33	0.18
R.K.M POWERGEN PRIVATE LIMITED	5.32	0.17
NTPC Darlipali	5.16	0.17
Jindal Steel & Power Ltd , DCP	5.04	0.17
Government of Himachal Pradesh_NJHPS	4.99	0.16
Adani Renewable Energy Forty Eight Limited (Wind)_PSS-9	4.96	0.16
NTPC Korba Stage I &II	4.94	0.16
Transition Sustainable Energy Services One Private Limited	4.83	0.16
ADANI GREEN ENERGY TWENTY FOUR LIMITED	4.78	0.16
GMR Warora Energy Limited	4.60	0.15
NTPC Kahalgaon stage I	4.49	0.15
Grian Energy Private Limited	4.36	0.14
NTPC Vindhyachal Stage V	4.35	0.14
ADANI SOLAR ENERGY JAISALMER TWO PRIVATE LIMITED(Project-2)	4.20	0.14
Transition Energy Services Private Limited	4.19	0.14
NTPC Lara Stage I	3.99	0.13
NLC Tamilnadu Power Limited	3.92	0.13
NTPC Unchahar Stage IV	3.84	0.13
Amp Energy Green Six Private Limited	3.80	0.13
KANTI BIJLEE UTPADAN NIGAM LIMITED	3.73	0.12
Jaypee Nigrie Super Thermal Power Plant	3.69	0.12
NTPC Dadri Stage II	3.67	0.12
NLC INDIA LIMITED THERMAL POWER STATION I EXPANSION	3.47	0.11
Goa WR	3.36	0.11
Serentica Renewables India 4 Private Limited	3.21	0.11
NTPC Farakka stage III	3.18	0.10

MB POWER (MADHYA PRADESH) LIMITED	3.15	0.10
Jindal India Thermal Power Limited	2.96	0.10
Ramagundam Floating solar	2.93	0.10
RENEW SURYA ROSHNI PRIVATE LIMITED Koppal PS	2.82	0.09
ADANI SOLAR ENERGY RJ TWO PRIVATE LIMITED	2.79	0.09
NTPC Telangana	2.76	0.09
Bongaigaon Thermal Power Station NTPC	2.73	0.09
NTPC Tanda Stage II	2.69	0.09
NTPC Korba Stage III	2.64	0.09
Sikkim	2.48	0.08
ACB (INDIA) LIMITED	2.45	0.08
NTPC Simhadri Stage II	2.35	0.08
Chandigarh (UT)	2.27	0.07
KARCHAM WANGTOO HYDRO ELECTRIC PLANT.	2.25	0.07
KSK MAHANADI POWER COMPANY LIMITED	2.23	0.07
TPSL Banderwala SECI 100_INF	2.19	0.07
Singoli Bhatwari HEP	2.15	0.07
LANCO AMARKANTAK POWER LIMITED	2.01	0.07
Palatana Plant	1.94	0.06
IGSTPS JHAJJAR	1.89	0.06
Amplus Ages Private Limited	1.87	0.06
NTPC Ramagundam Stage III	1.86	0.06
Government of Himachal Pradesh_Koldam HEP	1.68	0.06
ASSAM GAS BASED POWER STATION	1.63	0.05
IL&FS TAMIL NADU POWER COMPANY LIMITED	1.62	0.05
SEMBCORP GREEN INFRA PRIVATE LIMITED (INFIRM)	1.59	0.05
NTPC Unchahar Stage II	1.53	0.05
Government of Himachal Pradesh_RampurHEP	1.47	0.05
SHREE CEMENT LIMITED TPS	1.25	0.04
ADANI SOLAR ENERGY JODHPUR TWO LIMITED	1.24	0.04
NTPC Unchahar Stage I	1.19	0.04
NTPC Unchahar Stage III	1.11	0.04
Adani Power Limited - Raigarh TPP	1.08	0.04
NLC INDIA LIMITED THERMAL POWER STATION II STAGE I	1.07	0.04
NLC INDIA LIMITED THERMAL POWER STATION II STAGE II	1.06	0.04
Dhariwal ISTS	1.05	0.03
Government of Himachal Pradesh _ Chamera1HEP	1.04	0.03
TPSL 200MW TPTCL Banderwala	1.03	0.03
Serentica Renewables India 1 Private Limited	1.01	0.03
Daman and Diu - Dadra and Nagar Haveli	0.94	0.03
ADANI RENEWABLE ENERGY FIFTY FIVE LIMITED_PSS-3 (162.5 MW Hybrid Solar of 187.5MW HPD)	0.93	0.03
Maruti Clean Coal and Power Limited	0.89	0.03
DHARIWAL STU OTH	0.87	0.03
Sorang HEP (Himachal Sorang Power Pvt. Ltd.))	0.85	0.03
Government of Himachal Pradesh_ CHAMERA2HEP	0.82	0.03
NTPC Simhadri Stage I	0.80	0.03
Government of Himachal Pradesh _ Chamera3HEP	0.79	0.03
ADANI PORTS AND SPECIAL ECONOMIC ZONE LIMITED (PSS-3)	0.78	0.03
Punjab	0.76	0.03
Sainj HEP	0.76	0.02
ReNew Surya Roshni Private Limited_Gadag	0.74	0.02
NTPC SAIL POWER COMPANY LIMITED	0.73	0.02
Simhadri FSP 15 MW	0.69	0.02
NTPC SOLAPUR SOLAR PV Station	0.62	0.02
NEPAL ELECTRICITY AUTHORITY MUZAFFARPUR	0.59	0.02
Meghalaya	0.58	0.02

Adani Green Energy Twenty Four A Limited_PSS-3	0.54	0.02
NTPC BARH Stage II	0.52	0.02
Transition Cleantech Services Private Limited	0.50	0.02
Simhadri Floating solar (10 MW)	0.46	0.02
Government of Himachal Pradesh_Parbati3HEP	0.43	0.01
AD HYDRO POWER LIMITED	0.35	0.01
Ayana Renewable Power Three Private Limited Infirm	0.34	0.01
Nagaland	0.32	0.01
AMBUJA CEMENTS LIMITED_PSS3	0.29	0.01
RENEW SURYA ROSHNI PRIVATE LIMITED-Fatehgarh-III PS	0.26	0.01
GMR KAMALANGA ENERGY LTD-CTU	0.25	0.01
Budhil HEP (Greenko Budhil Hydro Power Pvt. Ltd.)	0.24	0.01
Government of Himachal Pradesh_BairasuilHEP	0.24	0.01
Goa SR	0.22	0.01
NTPC BARH Stage I	0.17	0.01
NLC INDIA LIMITED THERMAL POWER STATION II EXPANSION	0.16	0.01
Dikchu Hydro Electric Project (Sneha Kinetic Power Projects Pvt. Ltd.)	0.10	0.003
Adani Green Energy Twenty Five A Limited_PSS-2	0.10	0.003
ADHUNIK POWER & NATURAL RESOURCES LIMITED	0.05	0.002
ADANI RENEWABLE ENERGY FIFTY FIVE LIMITED_PSS3 (25 MW Hybrid Solar of 25 MW of 187.5MW HPD)	0.04	0.001
ADANI RENEWABLE ENERGY FIFTY FIVE LIMITED_PSS3 (20.8 MW Hybrid Wind of 25 MW of 187.5MW HPD)	0.03	0.001
JORETHANG LOOP HEP, DANS ENERGY PRIVATE LIMITED	0.03	0.001
Tashiding HEP, Shiga Energy Private Limited	0.004	0.0001
NEPAL ELECTRICITY AUTHORITY TANAKPUR	0.003	0.0001
<b>Total</b>	<b>3041.67</b>	<b>100.00</b>
<b>Volume sold by top 5 Regional Entities</b>	<b>1145.14</b>	<b>37.65</b>
<b>Herfindahl-Hirschman Index</b>		<b>0.0433</b>

Source: NLDC

**Table-27: VOLUME OF ELECTRICITY PURCHASED IN REAL TIME MARKET THROUGH POWER EXCHANGES, JANUARY 2025**

<b>Name of the Entity</b>	<b>Volume of Purchase (MU)</b>	<b>% of Volume</b>
Punjab	769.18	25.29
Telangana	424.57	13.96
Maharashtra	362.17	11.91
Uttar Pradesh	216.59	7.12
Kerala	157.10	5.16
Andhra Pradesh	130.94	4.30
Rajasthan	121.31	3.99
Gujarat	83.92	2.76
Tamil Nadu	73.98	2.43
Odisha	73.05	2.40
Jammu Kashmir	67.04	2.20
West Bengal	61.74	2.03
Delhi	54.98	1.81
Himachal Pradesh	51.47	1.69
Karnataka	50.24	1.65
Assam	47.10	1.55
Madhya Pradesh	42.45	1.40
Damodar Valley Corporation	37.41	1.23
NEPAL ELECTRICITY AUTHORITY MUZAFFARPUR	30.34	1.00
ArcelorMittal Nippon Steel India Limited	23.01	0.76
Daman and Diu - Dadra and Nagar Haveli	17.09	0.56
Uttarakhand	13.65	0.45
Bihar	13.61	0.45
MB POWER (MADHYA PRADESH) LIMITED	12.67	0.42
Meghalaya	11.81	0.39
Chhattisgarh	10.95	0.36
Manipur	9.45	0.31
Jharkhand	9.17	0.30
NEPAL ELECTRICITY AUTHORITY TANAKPUR	6.43	0.21
IND BARATH ENERGY UTKAL LIMITED	6.33	0.21
Jindal Power Limited, Stage-2	5.96	0.20
Haryana	5.33	0.18
Druk Green Power Corporation Limited (DGPCL-Bhutan)	5.03	0.17
NEA - Bihar STU	4.66	0.15
Arunachal Pradesh	4.12	0.14
Jindal Steel & Power Ltd , DCP	3.18	0.10
Nagaland	2.82	0.09
MAHAN ENERGEN LIMITED U#2	2.73	0.09
Ratnagiri Gas & Power Private Limited	2.68	0.09
North Central Railway Prayagraj	2.18	0.07
Goa SR	1.97	0.06
SIMHAPURI ENERGY LIMITED	1.69	0.06
NEA - UP STU	1.61	0.05
Tripura	1.13	0.04
Chandigarh (UT)	0.75	0.02
Goa WR	0.73	0.02
Kawas	0.67	0.02
Government of Himachal Pradesh_NJHPS	0.65	0.02



Adani Power Limited - Raigarh TPP	0.59	0.02
Gandhar	0.52	0.02
Maruti Clean Coal and Power Limited	0.50	0.02
ACB (INDIA) LIMITED	0.49	0.02
SHREE CEMENT LIMITED TPS	0.34	0.01
BHARAT ALUMINIUM COMPANY LTD (Bulk Consumer)	0.25	0.01
Sikkim	0.23	0.01
Government of Himachal Pradesh_ CHAMERA2HEP	0.21	0.01
Government of Himachal Pradesh_RampurHEP	0.19	0.01
Government of Himachal Pradesh_Parbati3HEP	0.19	0.006
Government of Himachal Pradesh _ Chamera3HEP	0.18	0.006
Government of Himachal Pradesh_Koldam HEP	0.14	0.005
Government of Himachal Pradesh _ Chamera1HEP	0.08	0.003
Mizoram	0.04	0.001
Pondicherry UT	0.04	0.001
Government of Himachal Pradesh_Bairasuil HEP	0.01	0.0005
<b>TOTAL</b>	<b>3041.67</b>	<b>100.00</b>
<b>Volume purchased by top 5 Regional Entities</b>	<b>1929.61</b>	<b>63.44</b>
<b>Herfindahl-Hirschman Index</b>		<b>0.1134</b>

Source: NLDC

**Table-28: TOTAL VOLUME OF NET SHORT-TERM TRANSACTIONS (REGIONAL ENTITY-WISE),  
JANUARY 2025**

S. No.	Name of the Entity	Total volume of net short-term transactions of electricity*
1	Telangana	2339.65
2	Maharashtra	1374.50
3	Gujarat	1261.81
4	Madhya Pradesh	822.05
5	Rajasthan	675.17
6	Jammu Kashmir	542.11
7	Kerala	528.94
8	HIMACHAL PRADESH	500.54
9	Tamil Nadu	424.89
10	Uttarakhand	415.02
11	Delhi	367.99
12	Andhra Pradesh	297.54
13	Punjab	249.08
14	Druk Green Power Corporation Limited (DGPCCL-Bhutan)	201.49
15	ArcelorMittal Nippon Steel India Limited	179.08
16	Damodar Valley Corporation	174.89
17	NEPAL ELECTRICITY AUTHORITY MUZAFFARPUR	107.33
18	NEA - Bihar STU	101.02
19	Meghalaya	81.42
20	Daman and Diu - Dadra and Nagar Haveli	46.21
21	BHARAT ALUMINIUM COMPANY LTD (Bulk Consumer)	32.02
22	NEA - UP STU	29.26
23	AMNSIL_WR_State	28.30
24	Karnataka	25.01
25	Arunachal Pradesh	20.45
26	NEPAL ELECTRICITY AUTHORITY TANAKPUR	19.54
27	North Central Railway Prayagraj	11.27
28	Goa WR	8.08
29	Chandigarh (UT)	7.33
30	Goa SR	7.15
31	Manipur	3.23
32	Ratnagiri Gas & Power Private Limited	2.68
33	Nagaland	0.80
34	Gandhar	0.23
35	NTPC Talcher Super Thermal Power Station Stage II	-0.001
36	Tashiding HEP, Shiga Energy Private Limited	-0.004
37	JORETHANG LOOP HEP, DANS ENERGY PRIVATE LIMITED	-0.03
38	Kawas	-0.04
39	ADHUNIK POWER & NATURAL RESOURCES LIMITED	-0.05
40	AURAIYA	-0.14
41	NLC INDIA LIMITED THERMAL POWER STATION II EXPANSION	-0.16
42	Ayana Renewable Power Three Private Limited_INF	-0.16
43	ANTA	-0.17
44	Mizoram	-0.25
45	RENEW SURYA ROSHNI PRIVATE LIMITED-Fatehgarh-III PS	-0.26
46	Ayana Renewable Power Three Private Limited Infirm	-0.34
47	DADRI_SOLAR	-0.39
48	Transition Cleantech Services Private Limited	-0.50
49	NTPC Sipat Stage II	-0.50
50	UNCHAHAR SOLAR	-0.66
51	NTPC SAIL POWER COMPANY LIMITED	-0.73
52	ReNew Surya Roshni Private Limited_Gadag	-0.74
53	NTPC Simhadri Stage I	-0.80
54	Budhil HEP (Greenko Budhil Hydro Power Pvt. Ltd.)	-0.83
55	NTPC Sipat Stage I	-1.01
56	DADRI	-1.03
57	NLC INDIA LIMITED THERMAL POWER STATION II STAGE II	-1.06
58	NLC INDIA LIMITED THERMAL POWER STATION II STAGE I	-1.07
59	Simhadri Floating solar (10 MW)	-1.26
60	NTPC Unchahar Stage III	-1.31
61	Government of Himachal Pradesh_Parbat3HEP	-1.40
62	NTPC SOLAPUR SOLAR PV Station	-1.47

63	Government of Himachal Pradesh_BairasuilHEP	-1.49
64	NTPC Unchahar Stage I	-1.55
65	ADANI RENEWABLE ENERGY FIFTY FIVE LIMITED_PSS3 (20.8 MW Hybrid Wind of 25 MW of 187.5MW HPD)	-1.63
66	ASSAM GAS BASED POWER STATION	-1.63
67	SINGRAULI SOLAR	-1.64
68	NTPC BARH Stage I	-1.67
69	NTPC Unchahar Stage II	-1.73
70	GMR KAMALANGA ENERGY LTD-CTU	-1.79
71	Amplus Ages Private Limited	-1.87
72	Simhadri FSP 15 MW	-1.92
73	LANCO AMARKANTAK POWER LIMITED	-2.01
74	NTPC Ramagundam Stage III	-2.20
75	ADANI GREEN ENERGY TWENTY SIX A LIMITED_PSS-3	-2.41
76	NTPC Simhadri Stage II	-2.56
77	NTPC Telangana	-2.76
78	RENEW SURYA ROSHNI PRIVATE LIMITED Koppal PS	-2.82
79	Government of Himachal Pradesh _ Chamera3HEP	-2.83
80	NTPC Korba Stage III	-2.87
81	ADANI RENEWABLE ENERGY FIFTY FIVE LIMITED_PSS3 (25 MW Hybrid Solar of 25 MW of 187.5MW HPD)	-2.91
82	NTPC Tanda Stage II	-2.94
83	IL&FS TAMIL NADU POWER COMPANY LIMITED	-3.15
84	Serentica Renewables India 4 Private Limited	-3.21
85	Bongaigaon Thermal Power Station NTPC	-3.27
86	Government of Himachal Pradesh _ CHAMERA2HEP	-3.37
87	NLC INDIA LIMITED THERMAL POWER STATION I EXPANSION	-3.47
88	Sainj HEP	-3.78
89	AVAADA SUNRAYS ENERGY PRIVATE LIMITED	-3.85
90	NTPC Lara Stage I	-4.33
91	Grian Energy Private Limited	-4.36
92	Government of Himachal Pradesh _ Chamera1HEP	-4.48
93	NTPC Unchahar Stage IV	-4.77
94	Dikchu Hydro Electric Project (Sneha Kinetic Power Projects Pvt. Ltd.)	-4.84
95	NLC Tamilnadu Power Limited	-4.93
96	NTPC Darlipali	-5.38
97	NREL-Dayapar Wind	-5.38
98	NTPC Korba Stage I &II	-5.61
99	NTPC Vindhyachal Stage V	-5.76
100	Sikkim	-5.86
101	DHARIWAL STU OTH	-5.92
102	SEMBCORP ENERGY INDIA LIMITED	-5.96
103	NTECL VALLUR	-6.01
104	Onevolt Energy Private Limited	-6.01
105	WIND FIVE RENERGY LIMITED	-6.30
106	MAITHON POWER LIMITED	-6.64
107	SEMBCORP GREEN INFRA PRIVATE LIMITED (INFIRM)	-6.78
108	Government of Himachal Pradesh_RampurHEP	-7.04
109	Sorang HEP (Himachal Sorang Power Pvt. Ltd.)	-7.23
110	NTPC Kahalgaon stage I	-7.52
111	NTPC Dadri Stage II	-7.94
112	Transition Energy Services Private Limited	-7.94
113	NTPC Rihand stage II	-7.97
114	NTPC Ramagundam Stage I &II	-8.00
115	NTPC Mouda Stage I	-8.07
116	Sasan Power Limited	-8.13
117	NLC INDIA LIMITED NEYVELI NEW TPS	-8.17
118	MEENAKSHI ENERGY LIMITED	-8.21
119	KAMENG HYDRO POWER STATION	-8.46
120	Adani Solar Energy Jaisalmer Two Private Limited	-8.55
121	Adani Solar Energy Four Private Limited	-8.81
122	Transition Sustainable Energy Services One Private Limited	-8.86
123	Dhariwal ISTS	-9.27
124	NTPC Vindhyachal Stage IV	-9.42
125	ADANI SOLAR ENERGY JODHPUR TWO LIMITED	-9.48
126	NTPC KUDGI	-9.49
127	NTPC Farakka stage III	-9.70

128	Government of Himachal Pradesh_Koldam HEP	-9.72
129	IGSTPS JHAJJAR	-9.99
130	NTPC Talcher Stage I	-10.08
131	NTPC Rihand stage I	-10.11
132	BALCO_CTU	-10.16
133	Transition Green Energy Private Limited	-10.22
134	NTPC Mouda Stage II	-10.66
135	COASTAL ENERGEN PRIVATE LIMITED	-10.68
136	NTPC Vindhyachal Stage I	-10.82
137	KHURJA STPP	-10.98
138	AMBUJA CEMENTS LIMITED_PSS3	-11.17
139	GMR Warora Energy Limited	-11.38
140	NTPC Vindhyachal Stage II	-11.77
141	Singoli Bhatwari HEP	-11.99
142	KSK MAHANADI POWER COMPANY LIMITED	-12.07
143	CONTINUUM POWER TRADING (TN) PRIVATE LIMITED	-12.28
144	NTPC Vindhyachal Stage III	-12.34
145	AD HYDRO POWER LIMITED	-12.37
146	NTPC Rihand stage III	-13.40
147	Ramagundam Floating solar	-13.43
148	NTPC Solapur	-13.46
149	TPSL Banderwala SECI 100_INF	-13.87
150	Adani Green Energy Twenty Six B Limited_PSS-2	-14.51
151	AGARTALA GAS BASED POWER STATION	-14.69
152	NTPC khargone	-14.70
153	NTPC North Karanpura STPS	-14.80
154	KANTI BIJLEE UTPADAN NIGAM LIMITED	-15.32
155	ADANI PORTS AND SPECIAL ECONOMIC ZONE LIMITED (PSS-3)	-16.22
156	Adept Renewable Technologies Private Limited	-17.25
157	Palatana Plant	-17.35
158	Pondicherry UT	-17.67
159	Adani Green Energy Twenty Four A Limited_PSS-3	-17.81
160	Amp Energy Green Six Private Limited	-17.83
161	JUNIPER GREEN COSMIC PRIVATE LIMITED	-18.04
162	ReNew Surya Roshni Pvt Ltd	-18.39
163	NTPC Gadawara	-18.40
164	KARCHAM WANGTOO HYDRO ELECTRIC PLANT.	-18.41
165	NTPC Kahalgaon stage II	-18.65
166	ACME DHAULPUR POWERTECH PRIVATE LIMITED	-18.87
167	ABC RENEWABLE ENERGY PRIVATE LIMITED	-18.92
168	RENEW SURYA VIHAAN PRIVATE LIMITED	-19.00
169	Serentica Renewables India 5 Private Limited	-19.73
170	NTPC Dadri Stage I	-20.26
171	Tripura	-21.97
172	IRCON RENEWABLE POWER LIMITED	-22.75
173	NTPC Singrauli	-23.79
174	Government of Himachal Pradesh_NJHPS	-23.97
175	OSTRO KANNADA POWER PRIVATE LIMITED	-24.14
176	Maruti Clean Coal and Power Limited	-24.37
177	Adani Solar Energy Jaisalmer Two Private Limited (Project-2)	-24.62
178	NTPP BRBCL	-24.68
179	TPSL 200MW TPTCL Banderwala	-24.90
180	Jharkhand	-25.64
181	The Tata Power Co Ltd (MTPS)	-25.89
182	Adani Renewable Energy Forty Eight Limited (Wind)_PSS-9	-25.93
183	ADANI SOLAR ENERGY RJ TWO PRIVATE LIMITED	-26.36
184	SB Energy Six Private Limited	-26.42
185	Avaada Sustainable RJProject Private Limited	-26.69
186	TATA POWER Renewable Energy Limited (CHHAYAN)	-28.33
187	ReNew Solar Urja Pvt Ltd	-32.52
188	Serentica Renewables India 1 Private Limited	-32.64
189	Sembcorp Energy India Limited Project II	-33.87
190	ADANI RENEWABLE ENERGY FIFTY FIVE LIMITED_PSS-3 (162.5 MW Hybrid Solar of 187.5MW HPD)	-34.26
191	TATA POWER GREEN ENERGY LIMITED	-35.84
192	Avaada RJHN Private Limited	-38.61

193	RENEW SURYA PRATAP PRIVATE LIMITED	-38.76
194	Jindal India Power Limited	-38.80
195	ADANI GREEN ENERGY TWENTY FOUR LIMITED	-39.63
196	SEIL Energy India Limited Project II	-40.19
197	NTPC BARH Stage II	-43.59
198	Mega Suryaurja Pvt Ltd	-43.63
199	ReNew Surya Ravi Private Limited	-45.16
200	Azure Power Forty Three Private Limited	-47.19
201	ADANI GREEN ENERGY TWENTY FIVE LIMITED	-48.57
202	NTPC Farakka stage I	-49.39
203	SIMHAPURI ENERGY LIMITED	-49.69
204	Eden Renewable Cite Private Limited	-50.58
205	THAR SURYA 1 PRIVATE LIMITED	-50.91
206	Adani Green Energy Twenty Five A Limited_PSS-2	-53.11
207	ADANI RENEWABLE ENERGY FORTY ONE LIMITED_PSS-3	-55.23
208	ACME DEOGHAR SOLAR POWER PRIVATE LIMITED	-56.56
209	Azure Power Forty One Private Limited	-56.64
210	Renew Sun wave Pvt. Ltd. Fatehgarh2	-57.44
211	BHARAT ALUMINIUM COMPANY LTD	-61.94
212	TRN ENERGY PRIVATE LIMITED	-64.51
213	R.K.M POWERGEN PRIVATE LIMITED	-66.36
214	NABINAGAR POWER GENERATING COMPANY LIMITED	-67.32
215	Jhabua Power Limited	-68.03
216	ADANI WIND ENERGY KUTCHH FOUR Ltd. Nakhatrana	-68.43
217	DB Power	-69.70
218	Jindal Steel & Power Ltd , DCP	-74.13
219	ACB (INDIA) LIMITED	-78.32
220	SHREE CEMENT LIMITED TPS	-80.03
221	D B Power Limited	-81.85
222	SIMHAPURI(SEPL)	-88.86
223	Adani Green Energy Twenty Five B Limited_PSS-2	-89.33
224	DHARIWAL STU MH	-90.92
225	ADANI HYBRID WIND ENERGY JAISALMER FOUR LIMITED	-91.73
226	RKM_POWER	-112.77
227	ADANI HYBRID SOLAR ENERGY JAISALMER FOUR LIMITED	-129.20
228	MAHAN ENERGEN LIMITED U#1	-129.63
229	MB POWER (MADHYA PRADESH) LIMITED	-143.32
230	Assam	-153.35
231	SEIL ENERGY INDIA LIMITED	-155.77
232	Odisha	-165.51
233	IND BARATH ENERGY UTKAL LIMITED	-185.07
234	ADANI RENEWABLE ENERGY HOLDING FOUR LIMITED_PSS-1	-210.18
235	Chhattisgarh	-237.16
236	Jindal India Thermal Power Limited	-276.48
237	Adani Power Limited - Raigarh TPP	-284.10
238	Jindal Power Limited, Stage-1	-297.65
239	West Bengal	-312.15
240	SKS Power Generation Chhattisgarh Limited	-326.54
241	MAHAN ENERGEN LIMITED U#2	-331.27
242	Haryana	-403.97
243	Jaypee Nigrie Super Thermal Power Plant	-437.04
244	Bihar	-553.64
245	Adani Power Limited-Raipur TPP	-589.64
246	Jindal Power Limited, Stage-2	-875.43
247	Uttar Pradesh	-990.39
* Total volume of net short-term transactions of electricity includes net of transactions of electricity through bilateral and power exchanges		
(-) indicates sale and (+) indicates purchase		
Source: NLDC		

**Table-29: DETAILS OF CONGESTION IN POWER EXCHANGES, JANUARY 2025**

	Details of Congestion	Day Ahead Market			Green Day Ahead Market			High Price Day Ahead Market			Real Time Market		
		IEX	PXIL	HPX	IEX	PXIL	HPX	IEX	PXIL	HPX	IEX	PXIL	HPX
1	Unconstrained Cleared Volume (MU)	6017.39	2.09	0.01	694.59	0.00	0.00	0.00	0.00	0.00	3035.92	5.11	0.65
2	Actual Cleared Volume and hence scheduled (MU)	6017.39	2.09	0.01	694.59	0.00	0.00	0.00	0.00	0.00	3035.92	5.11	0.65
3	Volume of electricity that could not be cleared and hence not scheduled because of congestion (MU) *	0.00	0.00	0.00	0.00	0.00	0.00	0.00	0.00	0.00	0.00	0.00	0.00
4	Volume of electricity that could not be cleared and hence not scheduled because of reasons other than congestion (MU)	0.00	0.00	0.00	0.00	0.00	0.00	0.00	0.00	0.00	0.00	0.00	0.00
5	Volume of electricity that could not be cleared as % to Unconstrained Cleared Volume	0.00%	0.00%	0.00%	0.00%	0.00%	0.00%	0.00%	0.00%	0.00%	0.00%	0.00%	0.00%
6	Percentage of the time congestion occurred during the month (Number of hours congestion occurred/ Total number of hours in the month)	0.00%	0.00%	0.00%	0.00%	0.00%	0.00%	0.00%	0.00%	0.00%	0.00%	0.00%	0.00%
7	Congestion occurrence (%) time block-wise												
	0.00 - 6.00 hours	0.00%	0.00%	0.00%	0.00%	0.00%	0.00%	0.00%	0.00%	0.00%	0.00%	0.00%	0.00%
	6.00 - 12.00 hours	0.00%	0.00%	0.00%	0.00%	0.00%	0.00%	0.00%	0.00%	0.00%	0.00%	0.00%	0.00%
	12.00 - 18.00 hours	0.00%	0.00%	0.00%	0.00%	0.00%	0.00%	0.00%	0.00%	0.00%	0.00%	0.00%	0.00%
	18.00 - 24.00 hours	0.00%	0.00%	0.00%	0.00%	0.00%	0.00%	0.00%	0.00%	0.00%	0.00%	0.00%	0.00%

\* This power would have been scheduled had there been no congestion

Source: IEX, PXIL, HPX & NLDC

**Table-30: VOLUME OF SHORT TERM TRANSACTIONS OF ELECTRICITY (DAY-WISE) (MU), JANUARY 2025**

Date	Bilateral <sup>^</sup> (Traders, PX, Direct)	Day Ahead Market <sup>#</sup>			Green Day Ahead Market <sup>#</sup>			High Price DAM <sup>#</sup>			Real Time Market <sup>#</sup>			Total Electricity Generation (MU)*
		IEX	PXIL	HPX	IEX	PXIL	HPX	IEX	PXIL	HPX	IEX	PXIL	HPX	
1-Jan-25	200.97	203.50	0.00	0.00	19.02	0.00	0.00	0.00	0.00	0.00	120.51	0.00	0.00	3811.36
2-Jan-25	215.34	230.61	0.06	0.00	19.61	0.00	0.00	0.00	0.00	0.00	97.55	0.00	0.00	3922.68
3-Jan-25	217.28	225.63	0.00	0.00	19.59	0.00	0.00	0.00	0.00	0.00	102.75	0.00	0.00	4021.92
4-Jan-25	218.94	227.66	0.09	0.00	23.34	0.00	0.00	0.00	0.00	0.00	99.36	0.08	0.03	4038.58
5-Jan-25	193.36	199.49	0.00	0.00	27.63	0.00	0.00	0.00	0.00	0.00	102.89	0.00	0.00	3917.74
6-Jan-25	206.90	199.50	0.01	0.00	23.82	0.00	0.00	0.00	0.00	0.00	89.07	0.40	0.00	3989.70
7-Jan-25	213.94	200.06	0.02	0.00	21.93	0.00	0.00	0.00	0.00	0.00	85.17	0.08	0.00	4058.19
8-Jan-25	219.81	191.68	0.12	0.00	20.26	0.00	0.00	0.00	0.00	0.00	87.84	0.11	0.00	4104.03
9-Jan-25	223.81	184.14	0.14	0.00	23.36	0.00	0.00	0.00	0.00	0.00	88.29	0.13	0.00	4119.37
10-Jan-25	218.42	181.04	0.08	0.00	21.64	0.00	0.00	0.00	0.00	0.00	87.85	0.28	0.00	4207.33
11-Jan-25	209.25	189.51	0.00	0.00	20.89	0.00	0.00	0.00	0.00	0.00	97.25	0.44	0.00	4195.93
12-Jan-25	177.84	186.51	0.00	0.00	22.31	0.00	0.00	0.00	0.00	0.00	101.56	0.00	0.00	3955.17
13-Jan-25	215.97	183.89	0.00	0.00	20.60	0.00	0.00	0.00	0.00	0.00	98.98	0.30	0.00	3981.36
14-Jan-25	212.45	206.86	0.00	0.00	21.68	0.00	0.00	0.00	0.00	0.00	100.36	0.00	0.00	3773.86
15-Jan-25	203.35	201.24	0.00	0.00	22.62	0.00	0.00	0.00	0.00	0.00	107.59	0.00	0.00	3829.08
16-Jan-25	211.55	189.16	0.00	0.00	20.72	0.00	0.00	0.00	0.00	0.00	123.53	0.20	0.00	3923.20
17-Jan-25	216.42	189.51	0.26	0.00	24.98	0.00	0.00	0.00	0.00	0.00	108.87	0.43	0.00	3947.59
18-Jan-25	213.32	190.49	0.00	0.00	25.04	0.00	0.00	0.00	0.00	0.00	93.19	0.60	0.00	4078.31
19-Jan-25	186.17	203.38	0.00	0.00	17.76	0.00	0.00	0.00	0.00	0.00	96.72	0.00	0.00	3997.39
20-Jan-25	220.70	176.80	0.00	0.00	20.03	0.00	0.00	0.00	0.00	0.00	90.97	0.00	0.00	4097.53
21-Jan-25	221.20	174.97	0.22	0.00	22.33	0.00	0.00	0.00	0.00	0.00	88.77	0.00	0.00	4138.86
22-Jan-25	219.81	178.74	0.25	0.00	22.75	0.00	0.00	0.00	0.00	0.00	81.88	0.25	0.00	4143.59
23-Jan-25	214.74	191.41	0.07	0.00	24.40	0.00	0.00	0.00	0.00	0.00	94.68	0.30	0.00	4033.27
24-Jan-25	220.05	179.89	0.00	0.00	23.31	0.00	0.00	0.00	0.00	0.00	100.61	0.00	0.00	4031.99
25-Jan-25	220.35	175.32	0.04	0.00	28.03	0.00	0.00	0.00	0.00	0.00	104.24	0.00	0.00	4125.56
26-Jan-25	191.05	173.07	0.00	0.00	22.59	0.00	0.00	0.00	0.00	0.00	126.41	0.00	0.00	3888.05
27-Jan-25	220.87	190.87	0.00	0.00	22.67	0.00	0.00	0.00	0.00	0.00	87.56	0.00	0.00	4164.46
28-Jan-25	219.80	189.84	0.18	0.01	18.91	0.00	0.00	0.00	0.00	0.00	94.60	0.00	0.00	4308.69
29-Jan-25	222.95	194.91	0.02	0.00	23.12	0.00	0.00	0.00	0.00	0.00	102.46	0.85	0.00	4296.72
30-Jan-25	229.51	202.13	0.28	0.00	24.98	0.00	0.00	0.00	0.00	0.00	89.22	0.68	0.00	4344.44
31-Jan-25	231.68	205.58	0.26	0.00	24.68	0.00	0.00	0.00	0.00	0.00	85.15	0.00	0.63	4386.19
<b>Total</b>	<b>6607.83</b>	<b>6017.39</b>	<b>2.09</b>	<b>0.01</b>	<b>694.59</b>	<b>0.00</b>	<b>0.00</b>	<b>0.00</b>	<b>0.00</b>	<b>0.00</b>	<b>3035.92</b>	<b>5.11</b>	<b>0.65</b>	<b>125832.14</b>

Source: NLDC

<sup>^</sup> includes bilateral short-term transactions under GNA and T-GNA

\* As available on CEA Website. Gross Electricity Generation excluding electricity generation from renewables and captive power plants.

<sup>#</sup> Scheduled volume of all the bid areas.

Note: Volume here has been finalised in consultation with Grid India, after resolving issues that emerged post implementation of GNA Regulations and transition to new WBES software by Grid India.

**Table-31(a): PRICE OF DAY AHEAD TRANSACTIONS OF ELECTRICITY (DAY-WISE) (₹/kWh), JANUARY 2025**

Market Segment →	Day Ahead Market of IEX			Day Ahead Market of PXIL			Day Ahead Market of HPX		
Date	Minimum ACP	Maximum ACP	Weighted Average Price*	Minimum ACP	Maximum ACP	Weighted Average Price*	Minimum ACP	Maximum ACP	Weighted Average Price*
1-Jan-25	2.04	10.00	3.73	-	-	-	-	-	-
2-Jan-25	2.02	10.00	3.81	10.00	10.00	10.00	-	-	-
3-Jan-25	2.00	10.00	3.76	-	-	-	-	-	-
4-Jan-25	2.25	10.00	4.26	10.00	10.00	10.00	-	-	-
5-Jan-25	2.14	7.50	3.43	-	-	-	-	-	-
6-Jan-25	2.05	10.00	5.00	5.00	5.00	5.00	-	-	-
7-Jan-25	2.12	10.00	4.87	4.58	10.00	7.56	-	-	-
8-Jan-25	2.10	10.00	4.76	10.00	10.00	10.00	-	-	-
9-Jan-25	2.51	10.00	4.89	10.00	10.00	10.00	-	-	-
10-Jan-25	2.27	10.00	4.82	10.00	10.00	10.00	-	-	-
11-Jan-25	2.39	10.00	4.95	-	-	-	-	-	-
12-Jan-25	2.13	10.00	4.40	-	-	-	-	-	-
13-Jan-25	2.12	10.00	5.20	-	-	-	-	-	-
14-Jan-25	2.39	10.00	4.72	-	-	-	-	-	-
15-Jan-25	2.16	10.00	4.88	-	-	-	-	-	-
16-Jan-25	2.12	10.00	4.56	-	-	-	-	-	-
17-Jan-25	2.10	10.00	4.85	10.00	10.00	10.00	-	-	-
18-Jan-25	2.19	10.00	4.83	-	-	-	-	-	-
19-Jan-25	2.08	10.00	4.01	-	-	-	-	-	-
20-Jan-25	2.14	10.00	4.53	-	-	-	-	-	-
21-Jan-25	2.18	10.00	4.55	10.00	10.00	10.00	-	-	-
22-Jan-25	2.21	10.00	4.22	10.00	10.00	10.00	-	-	-
23-Jan-25	2.22	10.00	4.21	10.00	10.00	10.00	-	-	-
24-Jan-25	2.27	10.00	4.35	-	-	-	-	-	-
25-Jan-25	2.25	10.00	4.19	10.00	10.00	10.00	-	-	-
26-Jan-25	1.62	4.90	3.01	-	-	-	-	-	-
27-Jan-25	2.20	10.00	4.48	-	-	-	-	-	-
28-Jan-25	2.34	10.00	4.28	10.00	10.00	10.00	10.00	10.00	10.00
29-Jan-25	2.48	10.00	4.09	10.00	10.00	10.00	-	-	-
30-Jan-25	2.65	10.00	4.40	10.00	10.00	10.00	-	-	-
31-Jan-25	2.65	10.00	4.48	10.00	10.00	10.00	-	-	-
	<b>1.62<sup>#</sup></b>	<b>10.00<sup>#</sup></b>	<b>4.40</b>	<b>4.58<sup>#</sup></b>	<b>10.00<sup>#</sup></b>	<b>9.95</b>	<b>10.00<sup>#</sup></b>	<b>10.00<sup>#</sup></b>	<b>10.00</b>

Source: IEX, PXIL and HPX

\* Weighted average price computed based on Area Clearing Volume (ACV) and Area Clearing Price (ACP) for each hour of the day. Here, ACV and ACP represent the scheduled volume and weighted average price of all the bid areas of power exchanges.

<sup>#</sup> Maximum/Minimum in the month



**Table-31(b): PRICE OF GREEN DAY AHEAD TRANSACTIONS OF ELECTRICITY (DAY-WISE) (₹/kWh),  
JANUARY 2025**

Market Segment →	Green Day Ahead Market of IEX			Green Day Ahead Market of PXIL			Green Day Ahead Market of HPX		
Date	Minimum ACP	Maximum ACP	Weighted Average Price*	Minimum ACP	Maximum ACP	Weighted Average Price*	Minimum ACP	Maximum ACP	Weighted Average Price*
1-Jan-25	2.70	10.00	4.61	-	-	-	-	-	-
2-Jan-25	2.70	10.00	4.56	-	-	-	-	-	-
3-Jan-25	2.72	10.00	4.51	-	-	-	-	-	-
4-Jan-25	2.50	10.00	4.11	-	-	-	-	-	-
5-Jan-25	2.26	6.09	3.50	-	-	-	-	-	-
6-Jan-25	2.93	10.00	4.35	-	-	-	-	-	-
7-Jan-25	2.54	10.00	4.72	-	-	-	-	-	-
8-Jan-25	2.66	10.00	4.89	-	-	-	-	-	-
9-Jan-25	2.54	10.00	4.78	-	-	-	-	-	-
10-Jan-25	2.92	10.00	5.00	-	-	-	-	-	-
11-Jan-25	2.92	10.00	4.85	-	-	-	-	-	-
12-Jan-25	2.24	10.00	4.06	-	-	-	-	-	-
13-Jan-25	2.92	10.00	5.28	-	-	-	-	-	-
14-Jan-25	2.92	10.00	5.25	-	-	-	-	-	-
15-Jan-25	2.92	10.00	5.23	-	-	-	-	-	-
16-Jan-25	2.92	10.00	4.97	-	-	-	-	-	-
17-Jan-25	2.74	10.00	4.45	-	-	-	-	-	-
18-Jan-25	2.50	10.00	4.62	-	-	-	-	-	-
19-Jan-25	2.92	10.00	4.89	-	-	-	-	-	-
20-Jan-25	2.92	10.00	4.82	-	-	-	-	-	-
21-Jan-25	2.92	10.00	5.07	-	-	-	-	-	-
22-Jan-25	2.34	10.00	4.81	-	-	-	-	-	-
23-Jan-25	2.34	10.00	4.58	-	-	-	-	-	-
24-Jan-25	2.34	10.00	4.29	-	-	-	-	-	-
25-Jan-25	2.34	10.00	4.33	-	-	-	-	-	-
26-Jan-25	2.26	10.00	4.45	-	-	-	-	-	-
27-Jan-25	2.92	10.00	5.09	-	-	-	-	-	-
28-Jan-25	2.92	10.00	5.29	-	-	-	-	-	-
29-Jan-25	2.66	10.00	4.50	-	-	-	-	-	-
30-Jan-25	2.65	10.00	4.18	-	-	-	-	-	-
31-Jan-25	2.65	10.00	4.69	-	-	-	-	-	-
	<b>2.24<sup>#</sup></b>	<b>10.00<sup>#</sup></b>	<b>4.64</b>	-	-	-	-	-	-

Source: IEX, PXIL and HPX

\* Weighted average price computed based on Area Clearing Volume (ACV) and Area Clearing Price (ACP) for each hour of the day. Here, ACV and ACP represent the scheduled volume and weighted average price of all the bid areas of power exchanges.

# Maximum/Minimum in the month

**Table-31(c): PRICE OF REAL TIME TRANSACTIONS OF ELECTRICITY (DAY-WISE) (₹/kWh), JANUARY 2025**

Market Segment →	Real Time Market of IEX			Real Time Market of PXIL			Real Time Market of HPX		
Date	Minimum ACP	Maximum ACP	Weighted Average Price*	Minimum ACP	Maximum ACP	Weighted Average Price*	Minimum ACP	Maximum ACP	Weighted Average Price*
1-Jan-25	0.92	5.50	3.06	-	-	-	-	-	-
2-Jan-25	1.20	10.00	3.65	-	-	-	-	-	-
3-Jan-25	2.25	10.00	4.47	-	-	-	-	-	-
4-Jan-25	0.90	10.00	4.72	10.00	10.00	10.00	10.00	10.00	10.00
5-Jan-25	1.22	7.95	3.54	-	-	-	-	-	-
6-Jan-25	1.94	10.00	4.39	10.00	10.00	10.00	-	-	-
7-Jan-25	2.04	10.00	4.49	10.00	10.00	10.00	-	-	-
8-Jan-25	2.08	10.00	4.58	10.00	10.00	10.00	-	-	-
9-Jan-25	2.00	10.00	4.99	10.00	10.00	10.00	-	-	-
10-Jan-25	2.24	10.00	5.85	10.00	10.00	10.00	-	-	-
11-Jan-25	2.52	10.00	5.77	10.00	10.00	10.00	-	-	-
12-Jan-25	2.00	10.00	3.96	-	-	-	-	-	-
13-Jan-25	1.66	10.00	4.44	10.00	10.00	10.00	-	-	-
14-Jan-25	0.50	10.00	3.25	-	-	-	-	-	-
15-Jan-25	1.01	10.00	3.81	-	-	-	-	-	-
16-Jan-25	2.02	10.00	4.28	10.00	10.00	10.00	-	-	-
17-Jan-25	1.47	10.00	4.35	10.00	10.00	10.00	-	-	-
18-Jan-25	1.98	10.00	4.61	10.00	10.00	10.00	-	-	-
19-Jan-25	1.50	10.00	3.46	-	-	-	-	-	-
20-Jan-25	1.68	10.00	4.28	-	-	-	-	-	-
21-Jan-25	1.54	10.00	4.26	-	-	-	-	-	-
22-Jan-25	1.62	10.00	4.25	10.00	10.00	10.00	-	-	-
23-Jan-25	1.88	10.00	4.04	10.00	10.00	10.00	-	-	-
24-Jan-25	1.80	10.00	3.94	-	-	-	-	-	-
25-Jan-25	2.16	10.00	3.97	-	-	-	-	-	-
26-Jan-25	1.40	8.00	3.20	-	-	-	-	-	-
27-Jan-25	1.59	10.00	3.82	-	-	-	-	-	-
28-Jan-25	2.75	10.00	4.36	-	-	-	-	-	-
29-Jan-25	2.89	10.00	4.57	10.00	10.00	10.00	-	-	-
30-Jan-25	2.33	10.00	4.77	10.00	10.00	10.00	-	-	-
31-Jan-25	3.00	10.00	4.95	-	-	-	10.00	10.00	10.00
	<b>0.50#</b>	<b>10.00#</b>	<b>4.23</b>	<b>10.00#</b>	<b>10.00#</b>	<b>10.00</b>	<b>10.00#</b>	<b>10.00#</b>	<b>10.00</b>

Source: IEX, PXIL and HPX

\* Weighted average price computed based on Area Clearing Volume (ACV) and Area Clearing Price (ACP) for each hour of the day. Here, ACV and ACP represent the scheduled volume and weighted average price of all the bid areas of power exchanges.

# Maximum/Minimum in the month

**Table-31(d): PRICE OF HIGH PRICE DAY AHEAD TRANSACTIONS OF ELECTRICITY (DAY-WISE) (₹/kWh),  
JANUARY 2025**

Market Segment →	High Price Day Ahead Market of IEX			High Price Day Ahead Market of PXIL			High Price Day Ahead Market of HPX		
	Minimum ACP	Maximum ACP	Weighted Average Price	Minimum ACP	Maximum ACP	Weighted Average Price	Minimum ACP	Maximum ACP	Weighted Average Price
1-Jan-25	-	-	-	-	-	-	-	-	-
2-Jan-25	-	-	-	-	-	-	-	-	-
3-Jan-25	-	-	-	-	-	-	-	-	-
4-Jan-25	-	-	-	-	-	-	-	-	-
5-Jan-25	-	-	-	-	-	-	-	-	-
6-Jan-25	-	-	-	-	-	-	-	-	-
7-Jan-25	-	-	-	-	-	-	-	-	-
8-Jan-25	-	-	-	-	-	-	-	-	-
9-Jan-25	-	-	-	-	-	-	-	-	-
10-Jan-25	-	-	-	-	-	-	-	-	-
11-Jan-25	-	-	-	-	-	-	-	-	-
12-Jan-25	-	-	-	-	-	-	-	-	-
13-Jan-25	-	-	-	-	-	-	-	-	-
14-Jan-25	-	-	-	-	-	-	-	-	-
15-Jan-25	-	-	-	-	-	-	-	-	-
16-Jan-25	-	-	-	-	-	-	-	-	-
17-Jan-25	-	-	-	-	-	-	-	-	-
18-Jan-25	-	-	-	-	-	-	-	-	-
19-Jan-25	-	-	-	-	-	-	-	-	-
20-Jan-25	-	-	-	-	-	-	-	-	-
21-Jan-25	-	-	-	-	-	-	-	-	-
22-Jan-25	-	-	-	-	-	-	-	-	-
23-Jan-25	-	-	-	-	-	-	-	-	-
24-Jan-25	-	-	-	-	-	-	-	-	-
25-Jan-25	-	-	-	-	-	-	-	-	-
26-Jan-25	-	-	-	-	-	-	-	-	-
27-Jan-25	-	-	-	-	-	-	-	-	-
28-Jan-25	-	-	-	-	-	-	-	-	-
29-Jan-25	-	-	-	-	-	-	-	-	-
30-Jan-25	-	-	-	-	-	-	-	-	-
31-Jan-25	-	-	-	-	-	-	-	-	-
	-	-	-	-	-	-	-	-	-

Source: IEX, PXIL and HPX

# Maximum/Minimum in the month

**Table-32: VOLUME OF SHORT-TERM TRANSACTIONS OF ELECTRICITY (REGIONAL ENTITY\*-WISE) (MU), JANUARY 2025**

Name of the Entity	Through Bilateral (Traders, PX, Direct)			Through Power Exchange (DAM + GDAM + HPDAM + RTM)			Total Net***
	Sale	Purchase	Net**	Sale	Purchase	Net**	
Punjab	778.08	0.00	-778.08	0.76	1027.92	1027.16	249.08
Telangana	190.02	0.43	-189.60	98.05	2627.30	2529.25	2339.65
Rajasthan	57.30	760.89	703.59	180.13	151.71	-28.42	675.17
West Bengal	71.65	0.93	-70.72	369.01	127.57	-241.44	-312.15
Kerala	0.38	284.82	284.44	36.17	280.67	244.50	528.94
Uttar Pradesh	943.17	56.09	-887.08	665.16	561.85	-103.31	-990.39
Maharashtra	49.98	583.96	533.98	88.12	928.65	840.52	1374.50
Karnataka	118.66	356.55	237.88	359.21	146.34	-212.87	25.01
Gujarat	57.85	244.18	186.33	50.26	1125.75	1075.49	1261.81
Assam	0.00	1.07	1.07	201.52	47.10	-154.42	-153.35
Tamil Nadu	10.09	422.51	412.42	327.18	339.66	12.47	424.89
Andhra Pradesh	118.34	165.54	47.20	115.04	365.39	250.34	297.54
Delhi	24.91	427.86	402.94	243.20	208.25	-34.96	367.99
Odisha	189.90	224.08	34.18	413.32	213.62	-199.69	-165.51
Jammu Kashmir	2.03	427.40	425.37	35.25	151.99	116.73	542.11
Bihar	70.54	84.70	14.16	581.93	14.13	-567.80	-553.64
Damodar Valley Corporation	112.85	105.03	-7.82	53.66	236.36	182.70	174.89
Chhattisgarh	71.31	5.80	-65.51	210.37	38.72	-171.64	-237.16
Uttarakhand	3.91	388.91	385.00	88.75	118.76	30.02	415.02
Daman and Diu - Dadra and Nagar Haveli	0.00	0.00	0.00	0.94	47.15	46.21	46.21
Madhya Pradesh	94.69	1085.02	990.33	254.32	86.04	-168.28	822.05
Tripura	0.60	0.00	-0.60	22.73	1.36	-21.37	-21.97
Jharkhand	0.00	33.55	33.55	101.94	42.74	-59.20	-25.64
ArcelorMittal Nippon Steel India Limited	0.00	0.00	0.00	0.00	179.08	179.08	179.08
HIMACHAL PRADESH	2.34	456.91	454.57	33.57	79.54	45.96	500.54
BALCO (Bulk Consumer)	0.00	31.63	31.63	0.00	0.39	0.39	32.02
Jindal Power Limited, Stage-2	248.36	0.00	-248.36	633.02	5.96	-627.07	-875.43
Haryana	280.97	190.30	-90.67	366.83	53.52	-313.30	-403.97
Manipur	0.00	0.00	0.00	6.22	9.45	3.23	3.23
SKS Power Generation Chhattisgarh Limited	292.71	0.00	-292.71	33.83	0.00	-33.83	-326.54
Meghalaya	13.45	38.81	25.36	9.76	65.81	56.05	81.42
The Tata Power Co Ltd (MTPS)	0.00	0.00	0.00	25.89	0.00	-25.89	-25.89
Government of Himachal Pradesh_ NJHPS	0.00	0.00	0.00	24.62	0.65	-23.97	-23.97
MB POWER (MADHYA PRADESH) LIMITED	156.27	0.00	-156.27	6.06	19.00	12.94	-143.32
Government of Himachal Pradesh_ Koldam HEP	0.00	0.00	0.00	9.86	0.14	-9.72	-9.72
Adani Power Limited - Raigarh TPP	2.06	0.00	-2.06	282.64	0.59	-282.05	-284.10
North Central Railway Prayagraj	0.00	0.00	0.00	0.00	11.27	11.27	11.27
Goa WR	0.00	41.78	41.78	34.57	0.87	-33.70	8.08
Government of Himachal Pradesh_ CHAMERA2HEP	0.00	0.00	0.00	3.57	0.21	-3.37	-3.37
Goa SR	0.00	0.00	0.00	0.22	7.38	7.15	7.15
Government of Himachal Pradesh_ Parbati3HEP	0.00	0.00	0.00	1.59	0.19	-1.40	-1.40
Government of Himachal Pradesh_ RampurHEP	0.00	0.00	0.00	7.23	0.19	-7.04	-7.04
Government of Himachal Pradesh_ Chamera3HEP	0.00	0.00	0.00	3.01	0.18	-2.83	-2.83
Government of Himachal Pradesh_ Chamera1HEP	0.00	0.00	0.00	4.56	0.08	-4.48	-4.48
SIMHAPURI ENERGY LIMITED	4.04	0.00	-4.04	47.33	1.69	-45.65	-49.69
Chandigarh (UT)	0.00	7.20	7.20	12.62	12.75	0.12	7.33
ACB (INDIA) LIMITED	37.51	0.00	-37.51	41.30	0.49	-40.81	-78.32
Government of Himachal Pradesh_ BairasuiHEP	0.00	0.00	0.00	1.51	0.01	-1.49	-1.49
Ratnagiri Gas & Power Private Limited	0.00	0.00	0.00	0.00	2.68	2.68	2.68
Sainj HEP	0.00	0.00	0.00	3.78	0.00	-3.78	-3.78
SHREE CEMENT LIMITED TPS	45.47	0.00	-45.47	34.90	0.34	-34.56	-80.03
Nagaland	0.00	0.00	0.00	4.75	5.54	0.80	0.80
Gandhar	0.29	0.00	-0.29	0.00	0.52	0.52	0.23
Singoli Bhatwari HEP	3.40	0.00	-3.40	8.59	0.00	-8.59	-11.99
Arunachal Pradesh	2.64	21.41	18.77	5.72	7.40	1.68	20.45
Sikkim	0.00	0.48	0.48	6.57	0.23	-6.34	-5.86
KARCHAM WANGTOO HYDRO ELECTRIC PLANT.	2.02	0.00	-2.02	16.39	0.00	-16.39	-18.41
Pondicherry UT	0.00	18.92	18.92	36.65	0.05	-36.59	-17.67
Mizoram	0.00	0.60	0.60	0.88	0.04	-0.84	-0.25
Budhil HEP (Greenko Budhil Hydro Power Pvt. Ltd.)	0.00	0.00	0.00	0.83	0.00	-0.83	-0.83
AD HYDRO POWER LIMITED	0.00	0.00	0.00	12.37	0.00	-12.37	-12.37
Nabinagar Power Generating Company Limited	0.00	0.00	0.00	67.32	0.00	-67.32	-67.32

NTPC Singrauli	0.00	0.00	0.00	23.79	0.00	-23.79	-23.79
SEIL ENERGY INDIA LIMITED	33.16	0.00	-33.16	122.61	0.00	-122.61	-155.77
MEENAKSHI ENERGY LIMITED	0.00	0.00	0.00	8.21	0.00	-8.21	-8.21
NTPC Farakka stage I	0.00	0.00	0.00	49.39	0.00	-49.39	-49.39
Sasan Power Limited	0.00	0.00	0.00	8.13	0.00	-8.13	-8.13
TRN ENERGY PRIVATE LIMITED	22.08	0.00	-22.08	42.43	0.00	-42.43	-64.51
NLC Tamilnadu Power Limited	0.00	0.00	0.00	4.93	0.00	-4.93	-4.93
Adani Power Limited-Raipur TPP	151.52	0.00	-151.52	438.11	0.00	-438.11	-589.64
NTPC Tanda Stage II	0.00	0.00	0.00	2.94	0.00	-2.94	-2.94
NTPC Rihand stage III	0.00	0.00	0.00	13.40	0.00	-13.40	-13.40
D B Power Limited	12.04	0.00	-12.04	69.81	0.00	-69.81	-81.85
NTPC Rihand stage II	0.00	0.00	0.00	7.97	0.00	-7.97	-7.97
NTPC Kahalgaon stage II	0.00	0.00	0.00	18.65	0.00	-18.65	-18.65
MAHAN ENERGEN LIMITED U#1	44.43	0.00	-44.43	85.21	0.00	-85.21	-129.63
NEPAL ELECTRICITY AUTHORITY MUZAFFARPUR	0.00	0.00	0.00	0.59	107.92	107.33	107.33
Jhabua Power Limited	37.53	0.00	-37.53	30.50	0.00	-30.50	-68.03
NTPC Sipat Stage I	0.00	0.00	0.00	1.01	0.00	-1.01	-1.01
Jindal Steel & Power Ltd , DCP	0.00	0.00	0.00	77.30	3.18	-74.13	-74.13
MAITHON POWER LIMITED	0.00	0.00	0.00	6.64	0.00	-6.64	-6.64
Renew Surya Roshni Private LIMITED Koppal PS	0.00	0.00	0.00	2.82	0.00	-2.82	-2.82
NTPC BARH Stage II	0.00	0.00	0.00	43.59	0.00	-43.59	-43.59
NTPC North Karanpura STPS	0.00	0.00	0.00	14.80	0.00	-14.80	-14.80
Jindal Power Limited, Stage-1	73.67	0.00	-73.67	223.98	0.00	-223.98	-297.65
NTPC Talcher Super Thermal Power Station Stage II	0.00	0.00	0.00	0.001	0.000	-0.001	-0.001
NTPC Telangana	0.00	0.00	0.00	2.76	0.00	-2.76	-2.76
NTPC Korba Stage I &II	0.00	0.00	0.00	5.61	0.00	-5.61	-5.61
NTPC Darlipali	0.00	0.00	0.00	5.38	0.00	-5.38	-5.38
NTPC Kahalgaon stage I	0.00	0.00	0.00	7.52	0.00	-7.52	-7.52
NLC INDIA LIMITED NEYVELI NEW TPS	0.00	0.00	0.00	8.17	0.00	-8.17	-8.17
NTPC Vindhyachal Stage IV	0.00	0.00	0.00	9.42	0.00	-9.42	-9.42
NTPC Gadarwara	0.00	0.00	0.00	18.40	0.00	-18.40	-18.40
NEPAL ELECTRICITY AUTHORITY TANAKPUR	0.00	0.00	0.00	0.00	19.54	19.54	19.54
NREL-Dayapar Wind	0.00	0.00	0.00	5.38	0.00	-5.38	-5.38
NTPC Rihand stage I	0.00	0.00	0.00	10.11	0.00	-10.11	-10.11
Sorang HEP (Himachal Sorang Power Pvt. Ltd.)	0.00	0.00	0.00	7.23	0.00	-7.23	-7.23
NTPC Sipat Stage II	0.00	0.00	0.00	0.50	0.00	-0.50	-0.50
MAHAN ENERGEN LIMITED U#2	84.02	6.59	-77.42	256.57	2.73	-253.84	-331.27
NTPC Farakka stage III	0.00	0.00	0.00	9.70	0.00	-9.70	-9.70
NTPC Vindhyachal Stage I	0.00	0.00	0.00	10.82	0.00	-10.82	-10.82
NTPC Lara Stage I	0.00	0.00	0.00	4.33	0.00	-4.33	-4.33
NTPC Vindhyachal Stage III	0.00	0.00	0.00	12.34	0.00	-12.34	-12.34
NTPC Vindhyachal Stage II	0.00	0.00	0.00	11.77	0.00	-11.77	-11.77
Adani Wind Energy Kutchn Four Ltd. Nakhatrana	2.12	0.00	-2.12	66.31	0.00	-66.31	-68.43
ReNew Surya Ravi Private Limited	8.06	0.00	-8.06	37.09	0.00	-37.09	-45.16
Transition Green Energy Private Limited	0.00	0.00	0.00	10.22	0.00	-10.22	-10.22
NTPC KUDGI	0.00	0.00	0.00	9.49	0.00	-9.49	-9.49
NTPC Ramagundam Stage I &II	0.00	0.00	0.00	8.00	0.00	-8.00	-8.00
KAMENG HYDRO POWER STATION	0.00	0.00	0.00	8.46	0.00	-8.46	-8.46
BHARAT ALUMINIUM COMPANY LTD	10.83	0.00	-10.83	51.11	0.00	-51.11	-61.94
NTPC khargone	0.00	0.00	0.00	14.70	0.00	-14.70	-14.70
NTPC Unchahar Stage IV	0.00	0.00	0.00	4.77	0.00	-4.77	-4.77
NLC INDIA LIMITED TPS II STAGE II	0.00	0.00	0.00	1.06	0.00	-1.06	-1.06
IGSTPS JHAJJAR	7.51	0.00	-7.51	2.48	0.00	-2.48	-9.99
NTPC Simhadri Stage II	0.00	0.00	0.00	2.56	0.00	-2.56	-2.56
Grian Energy Private Limited	0.00	0.00	0.00	4.36	0.00	-4.36	-4.36
Bongaigaon Thermal Power Station NTPC	0.00	0.00	0.00	3.27	0.00	-3.27	-3.27
NLC INDIA LIMITED TPS II STAGE I	0.00	0.00	0.00	1.07	0.00	-1.07	-1.07
NTPC Vindhyachal Stage V	0.00	0.00	0.00	5.76	0.00	-5.76	-5.76
Amplus Ages Private Limited	0.00	0.00	0.00	1.87	0.00	-1.87	-1.87
NLC INDIA LIMITED TPS I EXPANSION	0.00	0.00	0.00	3.47	0.00	-3.47	-3.47
Palatana Plant	0.00	0.00	0.00	17.35	0.00	-17.35	-17.35
Onevolt Energy Private Limited	0.00	0.00	0.00	6.01	0.00	-6.01	-6.01
Transition Energy Services Private Limited	0.00	0.00	0.00	7.94	0.00	-7.94	-7.94
Adhunik Power & Natural Resources Limited	0.00	0.00	0.00	0.05	0.00	-0.05	-0.05
SEIL Energy India Limited Project II	5.45	0.00	-5.45	34.74	0.00	-34.74	-40.19
NTPC BARH Stage I	0.00	0.00	0.00	1.67	0.00	-1.67	-1.67

OSTRO KANNADA POWER PRIVATE LIMITED	8.68	0.00	-8.68	15.46	0.00	-15.46	-24.14
IND BARATH ENERGY UTKAL LIMITED	118.05	0.00	-118.05	73.35	6.33	-67.02	-185.07
NTPP BRBCL	0.00	0.00	0.00	24.68	0.00	-24.68	-24.68
NTPC Unchahar Stage I	0.00	0.00	0.00	1.55	0.00	-1.55	-1.55
NTPC Korba Stage III	0.00	0.00	0.00	2.87	0.00	-2.87	-2.87
NTPC Unchahar Stage II	0.00	0.00	0.00	1.73	0.00	-1.73	-1.73
GMR Warora Energy Limited	0.97	0.00	-0.97	10.41	0.00	-10.41	-11.38
NTPC Mouda Stage I	0.00	0.00	0.00	8.07	0.00	-8.07	-8.07
Serentica Renewables India 1 Private Limited	31.63	0.00	-31.63	1.01	0.00	-1.01	-32.64
NTPC Dadri Stage II	0.00	0.00	0.00	7.94	0.00	-7.94	-7.94
R.K.M POWERGEN PRIVATE LIMITED	45.34	0.00	-45.34	21.02	0.00	-21.02	-66.36
NTPC Dadri Stage I	0.00	0.00	0.00	20.26	0.00	-20.26	-20.26
NTECL VALLUR	0.00	0.00	0.00	6.01	0.00	-6.01	-6.01
Serentica Renewables India 4 Private Limited	0.00	0.00	0.00	3.21	0.00	-3.21	-3.21
NTPC Solapur	0.00	0.00	0.00	13.46	0.00	-13.46	-13.46
ASSAM GAS BASED POWER STATION	0.00	0.00	0.00	1.63	0.00	-1.63	-1.63
KANTI BIJLEE UTPADAN NIGAM LIMITED	0.00	0.00	0.00	15.32	0.00	-15.32	-15.32
NTPC Simhadri Stage I	0.00	0.00	0.00	0.80	0.00	-0.80	-0.80
ADANI SOLAR ENERGY RJ TWO PRIVATE LIMITED	0.00	0.00	0.00	26.36	0.00	-26.36	-26.36
NTPC Ramagundam Stage III	0.00	0.00	0.00	2.20	0.00	-2.20	-2.20
Amp Energy Green Six Private Limited	0.00	0.00	0.00	17.83	0.00	-17.83	-17.83
NTPC Mouda Stage II	0.00	0.00	0.00	10.66	0.00	-10.66	-10.66
NLC INDIA LIMITED TPS II EXPANSION	0.00	0.00	0.00	0.16	0.00	-0.16	-0.16
RENEW SURYA PRATAP PRIVATE LIMITED	0.00	0.00	0.00	38.76	0.00	-38.76	-38.76
Tashiding HEP, Shiga Energy Private Limited	0.00	0.00	0.00	0.004	0.000	-0.004	-0.004
TPSL Banderwala SECI 100_INF	9.14	0.00	-9.14	4.73	0.00	-4.73	-13.87
JORETHANG LOOP HEP, DANS ENERGY PVT. LTD	0.00	0.00	0.00	0.03	0.00	-0.03	-0.03
Adept Renewable Technologies Private Limited	0.00	0.00	0.00	17.25	0.00	-17.25	-17.25
Sembcorp Green Infra Private Limited (Infir)	5.19	0.00	-5.19	1.59	0.00	-1.59	-6.78
IL&FS TAMIL NADU POWER COMPANY LIMITED	0.00	0.00	0.00	3.15	0.00	-3.15	-3.15
Maruti Clean Coal and Power Limited	14.30	0.00	-14.30	10.56	0.50	-10.06	-24.37
Jaypee Nigrie Super Thermal Power Plant	234.21	0.00	-234.21	202.83	0.00	-202.83	-437.04
Adani Solar Energy Jaisalmer Two Pvt. Ltd. (Project-2)	0.00	0.00	0.00	24.62	0.00	-24.62	-24.62
NTPC Talcher Stage I	0.00	0.00	0.00	10.08	0.00	-10.08	-10.08
AGARTALA GAS BASED POWER STATION	0.00	0.00	0.00	14.69	0.00	-14.69	-14.69
Ayana Renewable Power Three Private Limited Infir	0.00	0.00	0.00	0.34	0.00	-0.34	-0.34
Jindal India Thermal Power Limited	134.65	0.00	-134.65	141.83	0.00	-141.83	-276.48
WIND FIVE REENERGY LIMITED	0.00	0.00	0.00	6.30	0.00	-6.30	-6.30
GMR KAMALANGA ENERGY LTD-CTU	0.00	0.00	0.00	1.79	0.00	-1.79	-1.79
NTPC Unchahar Stage III	0.00	0.00	0.00	1.31	0.00	-1.31	-1.31
Renew Surya Roshni Private Limited-Fatehgarh-III PS	0.00	0.00	0.00	0.26	0.00	-0.26	-0.26
ADANI SOLAR ENERGY JODHPUR TWO LIMITED	0.00	0.00	0.00	9.48	0.00	-9.48	-9.48
COASTAL ENERGEN PRIVATE LIMITED	0.28	33.41	33.13	43.81	0.00	-43.81	-10.68
DHARIWAL STU OTH	0.24	0.00	-0.24	5.68	0.00	-5.68	-5.92
Continuum Power Trading (Tn) Private Limited	10.09	0.00	-10.09	2.19	0.00	-2.19	-12.28
NTPC SAIL POWER COMPANY LIMITED	0.00	0.00	0.00	0.73	0.00	-0.73	-0.73
TPSL 200MW TPTCL Banderwala	10.60	0.00	-10.60	14.30	0.00	-14.30	-24.90
Dhariwal ISTS	1.97	0.00	-1.97	7.30	0.00	-7.30	-9.27
NTPC SOLAPUR SOLAR PV Station	0.00	0.00	0.00	1.47	0.00	-1.47	-1.47
Ramagundam Floating solar	6.37	0.00	-6.37	7.06	0.00	-7.06	-13.43
Simhadri FSP 15 MW	0.00	0.00	0.00	1.92	0.00	-1.92	-1.92
Simhadri Floating solar (10 MW)	0.00	0.00	0.00	1.26	0.00	-1.26	-1.26
AVAADA SUNRAYS ENERGY PRIVATE LIMITED	3.85	0.00	-3.85	0.00	0.00	0.00	-3.85
DHARIWAL STU MH	90.92	0.00	-90.92	0.00	0.00	0.00	-90.92
Dikchu Hydro Electric Project (Sneha Kinetic Power Projects Pvt. Ltd.)	2.67	0.00	-2.67	2.17	0.00	-2.17	-4.84
Druk Green Power Corporation Limited (DGPC- Bhutan)	0.00	7.72	7.72	0.00	193.77	193.77	201.49
KHURJA STPP	0.00	0.00	0.00	10.98	0.00	-10.98	-10.98
KSK MAHANADI POWER COMPANY LIMITED	0.00	0.00	0.00	12.07	0.00	-12.07	-12.07
LANCO AMARKANTAK POWER LIMITED	0.00	0.00	0.00	2.01	0.00	-2.01	-2.01
NEA - Bihar STU	0.00	64.44	64.44	0.00	36.58	36.58	101.02
NEA - UP STU	0.00	0.00	0.00	0.00	29.26	29.26	29.26
ANTA	0.17	0.00	-0.17	0.00	0.00	0.00	-0.17
DADRI	1.03	0.00	-1.03	0.00	0.00	0.00	-1.03
Kawas	0.71	0.00	-0.71	0.00	0.67	0.67	-0.04
RENEW SURYA VIHAAN PRIVATE LIMITED	19.00	0.00	-19.00	0.00	0.00	0.00	-19.00

SEMBCORP ENERGY INDIA LIMITED	5.96	0.00	-5.96	0.00	0.00	0.00	-5.96
Sembcorp Energy India Limited Project II	33.87	0.00	-33.87	0.00	0.00	0.00	-33.87
TATA POWER GREEN ENERGY LIMITED	35.84	0.00	-35.84	0.00	0.00	0.00	-35.84
THAR SURYA 1 PRIVATE LIMITED	50.91	0.00	-50.91	0.00	0.00	0.00	-50.91
JUNIPER GREEN COSMIC PRIVATE LIMITED	7.72	0.00	-7.72	10.32	0.00	-10.32	-18.04
Serentica Renewables India 5 Private Limited	0.00	0.00	0.00	19.73	0.00	-19.73	-19.73
IRCON RENEWABLE POWER LIMITED	22.75	0.00	-22.75	0.00	0.00	0.00	-22.75
ADANI RENEWABLE ENERGY FORTY ONE LIMITED_PSS-3	1.33	0.00	-1.33	53.90	0.00	-53.90	-55.23
Adani Renewable Energy Holding Four Limited_PSS-1	62.08	0.00	-62.08	148.10	0.00	-148.10	-210.18
ADANI GREEN ENERGY TWENTY FIVE LIMITED	0.00	0.00	0.00	48.57	0.00	-48.57	-48.57
Adani Green Energy Twenty Five B Limited_PSS-2	0.00	0.00	0.00	89.33	0.00	-89.33	-89.33
Adani Renewable Energy Forty Eight Limited (Wind)_PSS-9	0.00	0.00	0.00	25.93	0.00	-25.93	-25.93
Transition Sustainable Energy Services One Private Limited	0.00	0.00	0.00	8.86	0.00	-8.86	-8.86
ADANI GREEN ENERGY TWENTY FOUR LIMITED	0.00	0.00	0.00	39.63	0.00	-39.63	-39.63
Adani Renewable Energy Fifty Five Limited_PSS-3 (162.5 MW Hybrid Solar of 187.5MW HPD)	0.00	0.00	0.00	34.26	0.00	-34.26	-34.26
Adani Ports And Special Economic Zone Limited (PSS-3)	0.00	0.00	0.00	16.22	0.00	-16.22	-16.22
ReNew Surya Roshni Private Limited_Gadag	0.00	0.00	0.00	0.74	0.00	-0.74	-0.74
Adani Green Energy Twenty Four A Limited_PSS-3	0.00	0.00	0.00	17.81	0.00	-17.81	-17.81
Transition Cleantech Services Private Limited	0.00	0.00	0.00	0.50	0.00	-0.50	-0.50
AMBUJA CEMENTS LIMITED_PSS3	2.08	0.00	-2.08	9.09	0.00	-9.09	-11.17
Adani Green Energy Twenty Five A Limited_PSS-2	0.00	0.00	0.00	53.11	0.00	-53.11	-53.11
Adani Renewable Energy Fifty Five Limited_PSS3 (25 MW Hybrid Solar of 25 MW of 187.5MW HPD)	1.87	0.00	-1.87	1.04	0.00	-1.04	-2.91
Adani Renewable Energy Fifty Five Limited_PSS3 (20.8 MW Hybrid Wind of 25 MW of 187.5MW HPD)	0.76	0.00	-0.76	0.86	0.00	-0.86	-1.63
Adani Green Energy Twenty Six B Limited_PSS-2	0.00	0.00	0.00	14.51	0.00	-14.51	-14.51
Adani Green Energy Twenty Six A Limited_PSS-3	0.00	0.00	0.00	2.41	0.00	-2.41	-2.41
AURAIYA	0.14	0.00	-0.14	0.00	0.00	0.00	-0.14
AMNSIL_WR_State	0.00	28.30	28.30	0.00	0.00	0.00	28.30
RKM_POWER	112.77	0.00	-112.77	0.00	0.00	0.00	-112.77
Adani Hybrid Solar Energy Jaisalmer Four Limited	129.20	0.00	-129.20	0.00	0.00	0.00	-129.20
Adani Hybrid Wind Energy Jaisalmer Four Limited	91.73	0.00	-91.73	0.00	0.00	0.00	-91.73
SIMHAPURI(SEPL)	88.86	0.00	-88.86	0.00	0.00	0.00	-88.86
DB Power	69.70	0.00	-69.70	0.00	0.00	0.00	-69.70
Renew Sun wave Pvt. Ltd. Fatehgarh2	57.44	0.00	-57.44	0.00	0.00	0.00	-57.44
Acme Deoghar Solar Power Private Limited	56.56	0.00	-56.56	0.00	0.00	0.00	-56.56
Eden Renewable Cite Private Limited	50.58	0.00	-50.58	0.00	0.00	0.00	-50.58
Azure Power Forty One Private Limited	56.64	0.00	-56.64	0.00	0.00	0.00	-56.64
Azure Power Forty Three Private Limited	47.19	0.00	-47.19	0.00	0.00	0.00	-47.19
Mega Suryaurja Pvt Ltd	43.63	0.00	-43.63	0.00	0.00	0.00	-43.63
Jindal India Power Limited	38.80	0.00	-38.80	0.00	0.00	0.00	-38.80
Avaada RJHN Private Limited	38.61	0.00	-38.61	0.00	0.00	0.00	-38.61
ReNew Solar Urja Pvt Ltd	32.52	0.00	-32.52	0.00	0.00	0.00	-32.52
TATA POWER Renewable Energy Limited (CHHAYAN)	28.33	0.00	-28.33	0.00	0.00	0.00	-28.33
Avaada Sustainable RJProject Private Limited	26.69	0.00	-26.69	0.00	0.00	0.00	-26.69
SB Energy Six Private Limited	26.42	0.00	-26.42	0.00	0.00	0.00	-26.42
ABC RENEWABLE ENERGY PRIVATE LIMITED	18.92	0.00	-18.92	0.00	0.00	0.00	-18.92
Acme Dhaulpur Powertech Private Limited	18.87	0.00	-18.87	0.00	0.00	0.00	-18.87
ReNew Surya Roshni Pvt Ltd	18.39	0.00	-18.39	0.00	0.00	0.00	-18.39
BALCO_CTU	10.16	0.00	-10.16	0.00	0.00	0.00	-10.16
Adani Solar Energy Four Private Limited	8.81	0.00	-8.81	0.00	0.00	0.00	-8.81
Adani Solar Energy Jaisalmer Two Private Limited	8.55	0.00	-8.55	0.00	0.00	0.00	-8.55
SINGRAULI SOLAR	1.64	0.00	-1.64	0.00	0.00	0.00	-1.64
UNCHAHAHAR SOLAR	0.66	0.00	-0.66	0.00	0.00	0.00	-0.66
Ayana Renewable Power Three Private Limited_INF	0.16	0.00	-0.16	0.00	0.00	0.00	-0.16
DADRI_SOLAR	0.39	0.00	-0.39	0.00	0.00	0.00	-0.39

Source: NLDC

\* in case of a state, the entities which are "selling" also include generators connected to state grid and the entities which are "buying" also include open access consumers.

\*\* (-) indicates sale and (+) indicates purchase,

\*\*\* Total net includes net of transactions through bilateral and power exchanges

**Table-33: VOLUME AND CHARGES UNDER DSM (DAY-WISE), JANUARY 2025**

Date	Volume (MU)	All India Grid Charges (₹/kWh)		
		Minimum	Maximum	Average
1-Jan-25	86.45	2.37	10.00	4.02
2-Jan-25	84.52	2.15	10.00	4.51
3-Jan-25	78.80	2.56	10.68	4.88
4-Jan-25	81.05	2.60	10.00	5.09
5-Jan-25	92.52	2.40	10.00	3.84
6-Jan-25	85.62	2.39	15.27	5.66
7-Jan-25	82.90	2.56	12.15	5.55
8-Jan-25	83.55	2.48	13.91	5.64
9-Jan-25	78.78	2.53	11.94	5.49
10-Jan-25	79.81	2.62	13.01	6.38
11-Jan-25	84.46	2.90	12.29	6.30
12-Jan-25	89.56	2.58	10.00	4.71
13-Jan-25	96.62	2.40	12.54	6.06
14-Jan-25	94.08	2.63	15.36	5.10
15-Jan-25	88.10	2.28	10.00	4.80
16-Jan-25	81.70	2.54	10.00	4.97
17-Jan-25	86.18	2.54	10.00	5.18
18-Jan-25	82.76	2.68	10.00	5.19
19-Jan-25	79.41	2.63	10.00	4.34
20-Jan-25	87.49	2.39	12.49	5.17
21-Jan-25	84.57	2.37	10.00	5.05
22-Jan-25	83.39	2.46	10.00	4.77
23-Jan-25	84.76	2.51	10.00	4.59
24-Jan-25	81.74	2.45	10.00	4.72
25-Jan-25	81.87	2.73	10.00	4.54
26-Jan-25	83.82	2.06	10.00	3.60
27-Jan-25	84.63	2.49	10.00	4.74
28-Jan-25	81.56	2.74	10.00	4.86
29-Jan-25	81.19	2.89	10.00	4.85
30-Jan-25	88.27	2.74	12.38	5.31
31-Jan-25	86.12	3.04	13.15	5.93
<b>Total</b>	<b>2626.26</b>	<b>2.06<sup>#</sup></b>	<b>15.36<sup>#</sup></b>	<b>5.03</b>
<i>Source: NLDC</i>				
<i># Maximum/Minimum in the month</i>				



**Table-34: VOLUME OF ELECTRICITY UNDER DRAWAL/ OVER INJECTION (EXPORTED) UNDER DSM, JANUARY 2025**

Name of the Entity	Volume of Under drawal/ Over injection (MU)	% of Volume
Bihar	131.06	5.06
Maharashta	118.89	4.59
Odisha	69.55	2.69
Altra Xergi Power Private Limited	65.77	2.54
Tamil Nadu	63.22	2.44
Uttar Pradesh	60.64	2.34
Karnataka	57.46	2.22
Rajasthan	56.40	2.18
Gujarat	52.56	2.03
West Bengal	50.89	1.96
Jindal Power Ltd. Stage-2	40.11	1.55
Madhya Pradesh	40.02	1.54
Kerala	39.44	1.52
Punjab	39.33	1.52
Andhra Pradesh	37.31	1.44
Haryana	34.25	1.32
RENEW SURYA PRATAP	33.34	1.29
Manikaran QCA	32.17	1.24
ARCELORMITTAL NIPPON STEEL INDIA LTD. Beneficiary	30.47	1.18
DVC Beneficiary	30.04	1.16
Adani Wind ENergy Kutchh One Limited	29.82	1.15
Chhattisgarh	28.85	1.11
Telangana	28.47	1.10
JHARKHAND Beneficiary	28.32	1.09
Spring, Pugalur	26.01	1.00
Uttarakhand	24.74	0.96
INOX GREEN ENERGY SERVICES LIMITED	23.69	0.91
Adani Solar Energy Jaisalmer One Private Limited WIND	22.42	0.87
Alfanar Energy Private Limited	18.55	0.72
Adani Wind Energy Kutchh Four Ltd, Nakhatrana and Dedhiya	18.49	0.71
BARH I	17.86	0.69
TANDA STAGE #2	17.30	0.67
Rihand Stage 1	17.06	0.66
TPCL Mundra Thermal Power Station (formerly CGPL)	17.03	0.66
Vallur Thermal Power Station	16.83	0.65
Adani Wind Energy MP One Private Limited	16.53	0.64
Renew Surya Vihaan Private Limited	16.26	0.63
Assam	15.99	0.62
Sitac Kabini Renewables Pvt. Ltd.	15.16	0.59
Jammu & Kashmir	14.86	0.57
Talcher stage 2	14.82	0.57
Semcorp Energy India Limited Project-1(SGPL)	14.57	0.56
AYANA RENEWABLE POWER SIX PRIVATE LIMITED	14.57	0.56
ReNew Surya Roshni Pvt Ltd	14.41	0.56
SINGRAULI TPS	14.23	0.55
JSW Renew Energy Limited Savalaperi infirm	14.14	0.55
Azure Power Forty Three Private Limited	14.09	0.54
Rihand Stage 3	14.08	0.54
OSTRO Energy Private Limited	14.04	0.54
Green Infra Wind Energy Limited SECI-III Vadva	13.60	0.52
JSW Energy Utkal Ltd	13.48	0.52
IGSTPS JHAJJAR	13.10	0.51
NTPC Rihand stage 2	12.70	0.49
BARH	12.69	0.49
Green Infra Wind Energy Limited SECI-II Vadva	12.61	0.49
Telangana super thermal power plant	12.51	0.48
HIRIYUR_OSTROKANNADA	12.40	0.48
Tuticorin JSWRenew W Infirm	12.25	0.47
Renew Power Limited SECI-II	11.50	0.44
AM Green Energy Private Limited Wind	11.45	0.44
Nepal	11.39	0.44

Chandigarh	11.34	0.44
RAP-C	10.80	0.42
Apraava Energy Private Limited (AEPL)	10.78	0.42
Ramagundam	10.57	0.41
Mytrah, Tuticorin	10.51	0.41
NTPC Gadawara Super Thermal Power Plant Stage-I	9.97	0.38
ReNew Wind Energy (AP2) Private Limited	9.96	0.38
ADANI HYBRID WIND ENERGY JAILSALMER ONE LTD	9.86	0.38
Kahalgaon stage 2	9.78	0.38
Netra Wind Private Limited	9.61	0.37
Girel, Tuticorin	9.51	0.37
Betam, Tuticorin	9.07	0.35
NABINAGAR STPP (NPGC)	9.05	0.35
Arunachal Pradesh	8.87	0.34
NTPC Khargone Super Thermal Power Plant	8.61	0.33
NTPC Solapur Thermal Power Station Stage-1	8.57	0.33
ReNew Surya Ojas Private Limited koppal	8.36	0.32
DADRI TPS#2	8.32	0.32
Ayana Renewable Power Three Private Limited	8.24	0.32
NTPC Farakka	8.06	0.31
Orange, Tuticorin	7.91	0.31
NTPC Mauda Super Thermal Power Station	7.89	0.30
Simhardi Stage-2	7.89	0.30
NTPC Vindhyachal Super Thermal Power Station Stage I	7.80	0.30
Srijan Energy	7.62	0.29
Adani Power Limited - Raipur TPP	7.54	0.29
Talcher stage 1	7.48	0.29
COASTAL ENERGEN PVT LTD	7.43	0.29
NTPC Mauda Super Thermal Power Station Stage 2	7.30	0.28
NVVN Bhutan	7.27	0.28
Moser Baer Power (MB Power) MP Limited	7.26	0.28
Delhi	7.19	0.28
Kahalgaon stage 1	7.00	0.27
ADANI HYBRID ENERGY JAILSALMER TWO LTD wind	6.84	0.26
NTPC Sipat Thermal Power Station Stage-1	6.80	0.26
Avikiran Solar India Private Ltd	6.76	0.26
Adani Hybrid Energy Jailsalmer Three Ltd (Wind Only)	6.74	0.26
Sipat Stage 2	6.72	0.26
Sasan Ultra Mega Power Project	6.63	0.26
Goa	6.51	0.25
Himachal Pradesh	6.31	0.24
Adani Solar Energy Jaisalmer Four Private Limited SOLAR	6.25	0.24
JSW RENEW ENERGY TWO LIMITED (KARUR)	6.06	0.23
NTPC Vindhyachal Super Thermal Power Station Stage 2	5.99	0.23
NEW NEYVELI THERMAL POWER PALNT	5.91	0.23
NTPC_KUDGI	5.88	0.23
MAHAN ENERGEN LIMITED	5.73	0.22
UNCHAHAR 2	5.64	0.22
NTPC Vindhyachal Super Thermal Power Station Stage 4	5.63	0.22
KHURJA_STPP	5.56	0.21
Bongaigaon TPP(NTPC)	5.46	0.21
Simhardi Stage-1	5.38	0.21
BALCO_CTU	5.26	0.20
UNCHAHAR 4	5.16	0.20
Kolayat Solar Power Plant	5.12	0.20
BEEMPOW ENERGY PRIVATE LIMITED	5.06	0.20
NTPC Vindhyachal Super Thermal Power Station Stage 3	5.04	0.19
Thar Surya 1 Private Limited	4.89	0.19
VENA ENERGY VIDYUTH PRIVATE LIMITED_INFIRM	4.87	0.19
NTPC ETTAYAPURAM SOLAR PLANT	4.79	0.19
Maithon Power Ltd.	4.78	0.18
Torrent Solargen Ltd (Torrent Power Ltd)	4.77	0.18
ACME RAISAR SOLAR ENERGY PRIVATE LIMITED	4.71	0.18
Jindal India Thermal Power Ltd.	4.53	0.17
Bangladesh	4.47	0.17
DADRI TPS#1	4.42	0.17

BRBCL_NABINAGAR	4.40	0.17
NLCII Stage 2	4.37	0.17
Ayana Renewable Power One Private Limited	4.25	0.16
ACB (India) Ltd.	4.06	0.16
PVG_Tata Power Renewable Energy Limited	3.99	0.15
Jhabua	3.95	0.15
ACME PHALODI SOLAR ENERGY PRIVATE LIMITED	3.91	0.15
Dadar & Nagar Haveli, Daman & Diu	3.76	0.15
Shree Cement Ltd	3.75	0.14
Tripura	3.74	0.14
Railways	3.72	0.14
Goa	3.60	0.14
Adani Hybrid Energy Jaisalmer One Ltd (Solar Only)	3.42	0.13
NTPC North Karanpura STPS	3.40	0.13
Adani Hybrid Energy Jaisalmer Three Ltd (Solar Only)	3.32	0.13
Ramagundam stage 3	3.32	0.13
Masaya Solar Energy Private Limited	3.30	0.13
Adani Solar Energy Jaisalmer One Private Limited	3.28	0.13
NTPC Vindhyachal Super Thermal Power Station Stage 5	3.22	0.12
Mahindra Renewables Pvt Ltd.	3.21	0.12
UNCHAHAR 1	3.20	0.12
Nokhra Solar	3.18	0.12
Nidan NTPC	3.17	0.12
ADYAH SOLAR ENERGY PRIVATE LIMITED	3.13	0.12
SIKKIM Beneficiary	3.13	0.12
RENEW SURYA RAVI	3.12	0.12
ADANI GREEN ENERGY TWENTY FIVE LIMITED	3.10	0.12
DP Power	3.06	0.12
NSPCL	3.02	0.12
TATA POWER RENEWABLE ENERGY LIMITED	2.98	0.11
Serentica Renewables India 4 Private Limited	2.94	0.11
GRT Jewellers (India) Private Limited_GRTJIPL	2.93	0.11
Adani Hybrid Energy Jaisalmer Two Ltd (SOLAR ONLY)	2.92	0.11
Korba Super Thermal Power Station Stage I&II	2.91	0.11
ACME DEOGHAR SOLAR POWER PRIVATE LIMITED	2.89	0.11
Athena Jaipur Solar Power Pvt. Ltd.	2.88	0.11
GMR Warora Energy Ltd.	2.88	0.11
Meghalaya	2.86	0.11
TATA POWER GREEN Energy Limited	2.82	0.11
Semcorp Energy India Limited_Project-2(SGPL)	2.77	0.11
NLCII Stage 1	2.76	0.11
Tehri Hydro	2.72	0.11
Clean Solar Power (bhadla) Pvt. Ltd	2.69	0.10
ADANI GREEN ENERGY TWENTY FOUR LIMITED	2.68	0.10
ABC RENEWABLE ENERGY PRIVATE LIMITED	2.68	0.10
Avaada Sunce Energy Private Limited	2.64	0.10
Farakka stage 3	2.63	0.10
NPCIL Kakrapar Atomic Power Plant	2.62	0.10
Meenakshi Energy Limited	2.61	0.10
Darlipali Super Thermal Power Station	2.51	0.10
Ayana, NPKUNTA	2.50	0.10
Adani NPKUNTA_SOLAR	2.48	0.10
NLC Tamli Nadu Power Ltd	2.46	0.09
Ranganadi HEP	2.45	0.09
ReNew Solar Power Private Limited	2.44	0.09
Ananthapuramu (Sprng) Ultra Mega Solar Park	2.44	0.09
Koldam Hydro Power	2.42	0.09
Mega Suryaurja Pvt Ltd	2.41	0.09
RISING SUN ENENRGY PVT LIMITED	2.33	0.09
Powerica	2.31	0.09
ReNew Solar Urja Pvt Ltd	2.30	0.09
ADANI SOLAR ENERGY KA NINE PRIVATE LIMITED	2.29	0.09
URI Stage 2	2.27	0.09
Avaada Sustainable RJProject Private Limited	2.25	0.09
ReNew Surya Roshni Pvt Ltd	2.22	0.09
Eden Renewable Cite Private Limited	2.20	0.08

TPSL Banderwala	2.18	0.08
DEVIKOT SOLAR	2.16	0.08
URI	2.15	0.08
Transition Green Energy Private Limited	2.14	0.08
NTPC, NPKunta	2.13	0.08
Azure Power Forty One Private Limited	2.11	0.08
IRCON RENEWABLE POWER LIMITED_PAVAGADA	2.09	0.08
Unchahar stage 3	2.02	0.08
Mejia Thermal Power station stage 2	2.02	0.08
Clean Solar Power (bhadla) Pvt. Ltd	2.02	0.08
Renew Sun wave Pvt. Ltd. Fatehgarh2	2.02	0.08
Arinsun Clean Energy Private Ltd	1.99	0.08
Adani Solar Energy Jaisalmer Two Private Limited	1.96	0.08
Pondichery	1.94	0.07
RENEW SOLAR ENERGY (JHARKHAND) PRIVATE LIMITED	1.90	0.07
NLCTSI EXPANSION 2	1.90	0.07
Adani Renewable (RJ) Ltd	1.88	0.07
ReNew Sun Bright Private Limited	1.87	0.07
Azure Power Maple Private Limited	1.86	0.07
Avaada Sunrays Energy Private Limited	1.84	0.07
NEPAL_NVVN	1.83	0.07
PARAMPUJYA SOALR ENERGY PVT LTD	1.83	0.07
PALATANA	1.77	0.07
AVAADA SUNSHINE ENERGY PRIVATE LIMITED	1.77	0.07
ACME Heergarh Powertech Private Limited	1.77	0.07
Avaada RJHN Private Limited	1.76	0.07
RAP-B	1.69	0.07
Adani Solar Energy Jaisalmer Two Private Limited Solar	1.68	0.06
Adani Power Limited - Raigarh TPP	1.67	0.06
KREDL, Pavagada	1.60	0.06
TP Saurya	1.59	0.06
NAPTHA JHAKRI HEP	1.57	0.06
Fortum Solar	1.54	0.06
ILFS	1.53	0.06
Manipur	1.51	0.06
Nepal	1.50	0.06
Adani Solar Energy Jaisalmer Five Private Limited	1.47	0.06
NLC Expansion	1.45	0.06
ELECTRO SOLAIRE PVT. LTD.	1.43	0.06
Adhunik Power & Natural Resources Ltd	1.43	0.06
NTPC ANTA SOLAR PV STATION	1.42	0.06
SRI5PL_BKN2	1.42	0.05
Azure Solar	1.41	0.05
NTPC RENEWABLE ENERGY LIMITED	1.36	0.05
Transition Sustainable Energy Services Pvt Ltd	1.34	0.05
Mizoram	1.33	0.05
AMPLUS Pavagada	1.33	0.05
JUNIPER GREEN COSMIC PRIVATE LIMITED	1.30	0.05
Avaada solarize	1.29	0.05
Avaada Solar, Pavagada	1.27	0.05
Serentica Renewables India 1 Private Limited	1.21	0.05
Transition Energy Services Private Limited	1.20	0.05
GMR Kamalanga Energy Ltd.	1.20	0.05
SEMBICORP GREEN INFRA PRIVATE LIMITED	1.14	0.04
Railways ER	1.12	0.04
Assam Gas Based Power Plant(Kathalguri)	1.10	0.04
NTPC RAMAGUNDAM FLOATING SOLAR PLANT	1.10	0.04
TATA, Npkunta	1.10	0.04
Adani Solar Energy Jaisalmer Two Private Limited (Project-2)	1.09	0.04
Grian Energy Private Limited	1.09	0.04
DGEN Mega Power Project	1.08	0.04
Dhariwal Infrastructure	1.07	0.04
Korba Super Thermal Power Station Stage III	1.03	0.04
Azure Power Pavagada	1.02	0.04
OneVolt Energy Private Limited	1.00	0.04
Karacham Wangtoo	0.99	0.04

NAPP	0.99	0.04
Azure Power Thirty Four pvt Limited	0.94	0.04
SJVN	0.94	0.04
Nagaland	0.93	0.04
Fortum finsurya	0.89	0.03
BALCO	0.88	0.03
AMP Energy Green Six Private Limited	0.87	0.03
SKS Power	0.87	0.03
VEDANTA LTD	0.85	0.03
Athena Bhiwadi Solar Power Pvt. Ltd	0.83	0.03
Jindal Steel & power Ltd. (Dangamahua CPP)	0.82	0.03
Athena Karnal Solar Power Pvt. Ltd	0.80	0.03
NTPC Kawas Solar	0.78	0.03
TATA POWER RENEWABLE ENERGY LTD, Radhanesda	0.77	0.03
NTPC Jhanor-Gandhar Gas Power plant	0.77	0.03
ACME Chittorgarh Solar Energy Private Limited	0.77	0.03
AMP Energy Green Five Private Limited	0.76	0.03
Ratnagiri Gas and Power PVT Limited	0.75	0.03
SIMHAPURI(SEPL)	0.72	0.03
SEMBCORP GREEN INFRA PRIVATE LIMITED (INFIRM)	0.71	0.03
NTPC Lara	0.70	0.03
Athena Hisar Solar Power Pvt. Ltd	0.67	0.03
DHAULIGANGA HEP	0.66	0.03
Yarrow, Pavagada	0.65	0.03
KSK mahanadi	0.65	0.03
Renew Power pavagada	0.65	0.02
GUJARAT INDUSTRIES POWER COMPANY LTD	0.64	0.02
Transition Sustainable Energy Services One Private Limited	0.61	0.02
JPNIGRIE (JNSTPP)	0.61	0.02
INDIGRID SOLAR-I (AP) PRIVATE LIMITED	0.61	0.02
Rapp 7&8	0.60	0.02
Kameng HEP	0.57	0.02
LANCO AMARKANTAK	0.55	0.02
Azure NPKUNTA	0.53	0.02
INDIGRID SOLAR-II (AP) PRIVATE LIMITED	0.53	0.02
RKM Power	0.51	0.02
Mega Solis Renewables Private Limited	0.50	0.02
PVG_AMPLUS_TUMKUR	0.49	0.02
NTPC Kawas Gas Plant	0.48	0.02
PVG_AMPLUS_PAVAGADA	0.46	0.02
Gujarat State Electricity Corporation Limited phase-2	0.46	0.02
Renew Solar Power Private Limited Bikaner	0.46	0.02
Lanco Kondapalli Power Ltd	0.45	0.02
Koteshwar hps	0.44	0.02
TRN Energy	0.44	0.02
Reliance Industries Limited Jamnagar	0.44	0.02
Sherisha Rooftop Solar SPV Four Private Limited	0.43	0.02
Agartala Gas Turbine Power Plant	0.41	0.02
Chamera 2	0.39	0.02
Simhadari Floating Solar	0.38	0.01
Adani Solar Energy Jaisalmer Two Private Limited, bhadla	0.36	0.01
Kopili HEP	0.36	0.01
Renew Surya Aayan Private Limited	0.33	0.01
Sewa 2 Hydro Power	0.33	0.01
Gujarat State Electricity Corporation Limited, Radhanesda	0.33	0.01
Kishanganga HEP	0.32	0.01
Adani Solar Energy Four Private Limited	0.31	0.01
Dehar Hydro	0.31	0.01
BHAKRA	0.30	0.01
Singrauli Solar	0.26	0.01
Chamera 3	0.24	0.01
Jindal Power Ltd.	0.24	0.01
NFL	0.24	0.01
Kopili-2 HEP	0.22	0.01
RANGIT	0.22	0.01
Gandhar Solar	0.21	0.01

Rampur Hydro	0.21	0.01
Sainj Hydro Power	0.21	0.01
Auraiya Solar	0.20	0.01
SALAL Hydro	0.20	0.01
Adept Renewable Technologies Private Limited	0.19	0.01
Doyang HEP	0.18	0.01
TANAKPUR	0.17	0.01
Singoli Bhatwari HEP	0.15	0.01
Unchahar Solar	0.14	0.01
Talcher Solar	0.13	0.01
Baba Atomic research Centre	0.12	0.005
Rongnichu Hydro Electric Project	0.12	0.004
DULHASTI Hydro power	0.11	0.004
Chuzachen	0.10	0.004
TEHRIPSP	0.10	0.004
Powergrid HVDC	0.09	0.003
Dadri Solar	0.09	0.003
AD hydro power	0.08	0.003
Tashiding Hydro Power	0.08	0.003
Chamera 1	0.08	0.003
Pong Hydro Power	0.07	0.003
Parbati 3	0.07	0.003
Pare HEP	0.07	0.003
Jorethang Loop Hydro Electric Project	0.07	0.003
Loktak HEP	0.06	0.002
DIKCHU	0.05	0.002
Power grid HVDC	0.05	0.002
Bairasuil Hydro Power	0.05	0.002
Lanco Budhil	0.04	0.001
Sorang HEP	0.03	0.001
Powergrid HVDC	0.01	0.0002
SINGRAULI HYDRO	0.0002	0.00001
<b>Total</b>	<b>2590.15</b>	<b>100.00</b>
<b>Volume Exported by top 5 Regional Entities</b>	<b>448.49</b>	<b>17.32</b>

Source: NLDC

**Table-35: VOLUME OF ELECTRICITY OVER DRAWAL/ UNDER INJECTION (IMPORTED) UNDER DSM, JANUARY 2025**

Name of the Entity	Volume of Over drawal/ Under Injection (MU)	% of Volume
Rajasthan	154.12	5.79
Gujarat	124.67	4.68
Tamil Nadu	106.74	4.01
Madhya Pradesh	97.39	3.66
Punjab	95.68	3.59
Uttar Pradesh	91.17	3.42
KHURJA_STPP	89.90	3.38
Telangana	77.83	2.92
NTPC_KUDGI	68.30	2.57
Jammu & Kashmir	63.44	2.38
Jindal Power Ltd.	57.64	2.16
Haryana	54.03	2.03
Andhra Pradesh	51.63	1.94
Karnataka	45.93	1.73
Maharashtra	41.36	1.55
Delhi	36.56	1.37
Telangana super thermal power plant	33.69	1.27
Himachal Pradesh	29.91	1.12
Chattisgarh	28.53	1.07
JHARKHAND Beneficiary	23.45	0.88
Uttarakhand	20.60	0.77
DVC Beneficiary	20.57	0.77
IGSTPS JHAJJAR	20.20	0.76
NEPAL_NVVN	19.68	0.74
Sasan Ultra Mega Power Project	18.15	0.68
Assam Gas Based Power Plant(Kathalguri)	17.90	0.67
DADRI TPS#1	17.90	0.67
NTPC Lara	17.52	0.66
Jindal Power Ltd. Stage-2	17.06	0.64
AM Green Energy Private Limited Wind	16.16	0.61
TANDA STAGE #2	15.18	0.57
Korba Super Thermal Power Station Stage I&II	14.99	0.56
NTPC Farakka	14.61	0.55
ARCELORMITTAL NIPPON STEEL INDIA LTD. Beneficiary	14.52	0.55
Odisha	14.43	0.54
RKM Power	14.13	0.53
Ramagundam	13.88	0.52
JPNIGRIE (JNSTPP)	12.97	0.49
JSW Renew Energy Limited Savalaperi infirm	12.61	0.47
DADRI TPS#2	12.61	0.47
ReNew Surya Ojas Private Limited koppal	11.66	0.44
Simhardi Stage-1	11.27	0.42
Railways	11.04	0.41
NPCIL Kakrapar Atomic Power Plant	10.30	0.39
Bihar	10.27	0.39
NTPC Mauda Super Thermal Power Station	10.24	0.38
HIRIYUR_OSTROKANNADA	10.17	0.38
Tuticorin_JSWRenew_W_Infirm	10.11	0.38
UNCHAHAR 2	9.86	0.37
NTPC Solapur Thermal Power Station Stage-1	9.83	0.37
Adani Solar Energy Jaisalmer One Private Limited WIND	9.56	0.36
NTPC Mauda Super Thermal Power Station Stage 2	9.28	0.35
NTPC Gadawara Super Thermal Power Plant Stage-I	9.26	0.35
BALCO_CTU	9.11	0.34
Manipur	8.72	0.33
UNCHAHAR 4	8.63	0.32
NEW NEYVELI THERMAL POWER PALNT	8.26	0.31
OSTRO Energy Private Limited	8.17	0.31
Dadar & Nagar Haveli, Daman & Diu	8.03	0.30
BARH	8.02	0.30
Darlipali Super Thermal Power Station	8.00	0.30
Kerala	7.98	0.30

Adani Power Limited - Raipur TPP	7.97	0.30
ReNew Surya Roshni Pvt Ltd	7.82	0.29
Kahalgaon stage 2	7.82	0.29
Nepal	7.70	0.29
SIMHAPURI(SEPL)	7.68	0.29
Pondichery	7.54	0.28
Girel, Tuticorin	7.43	0.28
Kolayat Solar Power Plant	7.32	0.27
NABINAGAR STPP (NPGC)	7.28	0.27
Adani Wind Energy MP One Private Limited	7.20	0.27
Bongaigaon TPP(NTPC)	7.07	0.27
Manikaran QCA	6.91	0.26
NLCII Stage 2	6.75	0.25
NTPC Sipat Thermal Power Station Stage-1	6.69	0.25
ReNew Wind Energy (AP2) Private Limited	6.60	0.25
MAHAN ENERGEN LIMITED	6.48	0.24
Adani Solar Energy Jaisalmer Four Private Limited SOLAR	6.43	0.24
Apraava Energy Private Limited (AEPL)	6.36	0.24
Renew Power Limited SECI-II	6.36	0.24
Adani Wind Energy Kutchh One Limited	6.33	0.24
ACME DEOGHAR SOLAR POWER PRIVATE LIMITED	6.27	0.24
Sitac Kabini Renewables Pvt. Ltd.	6.11	0.23
Meghalaya	5.98	0.22
AYANA RENEWABLE POWER SIX PRIVATE LIMITED	5.97	0.22
NSPCL	5.85	0.22
Goa	5.84	0.22
SINGRAULI TPS	5.77	0.22
ADYAH SOLAR ENERGY PRIVATE LIMITED	5.73	0.22
ADANI GREEN ENERGY TWENTY FOUR LIMITED	5.62	0.21
Betam, Tuticorin	5.54	0.21
Nepal	5.46	0.21
NTPC Vindhyachal Super Thermal Power Station Stage 3	5.31	0.20
NTPC North Karanpura STPS	5.21	0.20
BARH I	5.17	0.19
NTPC Khargone Super Thermal Power Plant	5.06	0.19
NAPTHA JHAKRI HEP	4.91	0.18
URI	4.86	0.18
NLC Expansion	4.80	0.18
Adani NPKUNTA SOLAR	4.77	0.18
Adani Wind Energy Kutchh Four Ltd, Nakhatrana and Dedhiya	4.75	0.18
Maithon Power Ltd.	4.69	0.18
Netra Wind Private Limited	4.67	0.18
Azure Power Forty Three Private Limited	4.66	0.18
Assam	4.65	0.17
RAP-C	4.65	0.17
Ananthapuramu (Sprng) Ultra Mega Solar Park	4.63	0.17
DP Power	4.59	0.17
Avaada Sunce Energy Private Limited	4.53	0.17
Ayana, NPKUNTA	4.49	0.17
NTPC Vindhyachal Super Thermal Power Station Stage 2	4.37	0.16
Mizoram	4.37	0.16
BEEMPOW ENERGY PRIVATE LIMITED	4.33	0.16
Simhardi Stage-2	4.31	0.16
Talcher stage 2	4.29	0.16
Tripura	4.23	0.16
BHAKRA	4.19	0.16
Mytrah, Tuticorin	4.16	0.16
Arinsun Clean Energy Private Ltd	4.15	0.16
Kahalgaon stage 1	4.13	0.16
Avaada Sunrays Energy Private Limited	4.13	0.16
Green Infra Wind Energy Limited SECI-III Vadva	4.11	0.15
Fortum Solar	4.04	0.15
Vallur Thermal Power Station	4.03	0.15
Chamera 1	4.01	0.15
PVG_Tata Power Renewable Energy Limited	4.01	0.15
NTPC Vindhyachal Super Thermal Power Station Stage I	3.96	0.15



ACME Heergarh Powertech Private Limited	3.96	0.15
Unchahar stage 3	3.95	0.15
TPSL Banderwala	3.94	0.15
Avaada Sustainable RJProject Private Limited	3.94	0.15
ReNew Solar Power Private Limited	3.90	0.15
BRBCL_NABINAGAR	3.90	0.15
Koteshwar hps	3.89	0.15
Nokhra Solar	3.88	0.15
Clean Solar Power (bhadla) Pvt. Ltd	3.87	0.15
VENA ENERGY VIDYUTH PRIVATE LIMITED_INFIRM	3.80	0.14
Rampur Hydro	3.74	0.14
Adani Power Limited - Raigarh TPP	3.72	0.14
SIKKIM Beneficiary	3.65	0.14
ACME RAISAR SOLAR ENERGY PRIVATE LIMITED	3.63	0.14
West Bengal	3.60	0.14
Masaya Solar Energy Private Limited	3.55	0.13
Ramagundam stage 3	3.54	0.13
IRCON RENEWABLE POWER LIMITED_PAVAGADA	3.53	0.13
Korba Super Thermal Power Station Stage III	3.53	0.13
Alfanar Energy Private Limited	3.52	0.13
ACME PHALODI SOLAR ENERGY PRIVATE LIMITED	3.52	0.13
Avikiran Solar India Private Ltd	3.51	0.13
NTPC, NPKunta	3.48	0.13
Orange, Tuticorin	3.44	0.13
NTPC ETTAYAPURAM SOLAR PLANT	3.44	0.13
Green Infra Wind Energy Limited SECI-II Vadva	3.41	0.13
Eden Renewable Cite Private Limited	3.41	0.13
Talcher stage 1	3.39	0.13
Ayana Renewable Power One Private Limited	3.38	0.13
ADANI HYBRID WIND ENERGY JAILSALMER ONE LTD	3.36	0.13
Serentica Renewables India 1 Private Limited	3.36	0.13
ADANI HYBRID ENERGY JAILSALMER ONE LTD (SOLAR ONLY)	3.35	0.13
Torrent Solargen Ltd (Torrent Power Ltd)	3.35	0.13
SRI5PL_BKN2	3.31	0.12
Bangladesh	3.31	0.12
RAP-B	3.31	0.12
NLCII Stage 1	3.30	0.12
RENEW SURYA RAVI	3.29	0.12
Avaada RJHN Private Limited	3.29	0.12
Dehar Hydro	3.29	0.12
LANCO AMARKANTAK	3.28	0.12
AVAADA SUNSHINE ENERGY PRIVATE LIMITED	3.27	0.12
Moser Baer Power (MB Power) MP Limited	3.27	0.12
Thar Surya 1 Private Limited	3.23	0.12
Tehri Hydro	3.19	0.12
Azure Power Forty One Private Limited	3.18	0.12
ABC RENEWABLE ENERGY PRIVATE LIMITED	3.17	0.12
URI Stage 2	3.12	0.12
Azure Power Maple Private Limited	3.11	0.12
Farakka stage 3	3.08	0.12
Clean Solar Power (bhadla) Pvt. Ltd	3.06	0.11
Athena Jaipur Solar Power Pvt. Ltd.	2.99	0.11
Kameng HEP	2.98	0.11
Renew Sun wave Pvt. Ltd. Fatehgarh2	2.97	0.11
ReNew Sun Bright Private Limited	2.96	0.11
ADANI HYBRID ENERGY JAILSALMER THREE LTD (SOLAR ONLY)	2.95	0.11
ADANI HYBRID ENERGY JAILSALMER TWO LTD (SOLAR ONLY)	2.93	0.11
ADANI SOLAR ENERGY KA NINE PRIVATE LIMITED	2.90	0.11
RENEW SOLAR ENERGY (JHARKHAND) PRIVATE LIMITED	2.89	0.11
JSW RENEW ENERGY TWO LIMITED (KARUR)	2.84	0.11
ReNew Surya Roshni Pvt Ltd	2.77	0.10
Jindal India Thermal Power Ltd.	2.74	0.10
NTPC Vindhyachal Super Thermal Power Station Stage 4	2.73	0.10
NTPC Vindhyachal Super Thermal Power Station Stage 5	2.59	0.10
Adani Renewable (RJ) Ltd	2.53	0.10

NTPC RENEWABLE ENERGY LIMITED	2.52	0.09
Sipat Stage 2	2.49	0.09
SKS Power	2.48	0.09
Semcorp Energy India Limited_Project-2(SGPL)	2.46	0.09
NTPC Rihand stage 2	2.45	0.09
Koldam Hydro Power	2.44	0.09
TPCL Mundra Thermal Power Station (formerly CGPL)	2.42	0.09
Karacham Wangtoo	2.41	0.09
Mejia Thermal Power station stage 2	2.40	0.09
ReNew Solar Urja Pvt Ltd	2.40	0.09
PARAMPUJYA SOALR ENERGY PVT LTD	2.39	0.09
UNCHAHAR 1	2.37	0.09
RISING SUN ENENERGY PVT LIMITED	2.36	0.09
Nidan NTPC	2.35	0.09
TATA POWER GREEN Energy Limited	2.35	0.09
Adani Solar Energy Jaisalmer Five Private Limited	2.31	0.09
Chandigarh	2.29	0.09
DEVIKOT SOLAR	2.27	0.09
ADANI HYBRID ENERGY JAILSALMER TWO LTD wind	2.26	0.08
ADANI GREEN ENERGY TWENTY FIVE LIMITED	2.23	0.08
Nagaland	2.22	0.08
Agartala Gas Turbine Power Plant	2.21	0.08
Mahindra Renewables Pvt Ltd.	2.15	0.08
TATA POWER RENEWABLE ENERGY LIMITED	2.11	0.08
Semcorp Energy India Limited_Project-1(SGPL)	2.09	0.08
Azure Solar	2.08	0.08
Adani Solar Energy Jaisalmer Two Private Limited	2.08	0.08
ADANI HYBRID ENERGY JAILSALMER THREE LTD (Wind ONLY)	2.05	0.08
Rihand Stage 3	2.03	0.08
NVVN Bhutan	2.00	0.08
Mega Suryaurja Pvt Ltd	1.97	0.07
GMR Warora Energy Ltd.	1.94	0.07
NLC Tamli Nadu Power Ltd	1.94	0.07
ELECTRO SOLAIRE PVT. LTD.	1.92	0.07
Adani Solar Energy Jaisalmer One Private Limited	1.92	0.07
GRT Jewellers (India) Private Limited_GRTJIPL	1.90	0.07
Adani Solar Energy Jaisalmer Two Private Limited Solar	1.87	0.07
DULHASTI Hydro power	1.87	0.07
Adani Solar Energy Jaisalmer Two Private Limited (Project-2)	1.85	0.07
KSK mahanadi	1.83	0.07
Avaada Solar, Pavagada	1.81	0.07
Arunachal Pradesh	1.80	0.07
Avaada solarize	1.74	0.07
Railways ER	1.71	0.06
Azure Power Thirty Four pvt Limited	1.70	0.06
Srijan Energy	1.60	0.06
NTPC RAMAGUNDAM FLOATING SOLAR PLANT	1.52	0.06
Transition Energy Services Private Limited	1.51	0.06
TEHRIPSP	1.49	0.06
Pong Hydro Power	1.48	0.06
ILFS	1.47	0.06
AMPLUS Pavagada	1.45	0.05
Grian Energy Private Limited	1.45	0.05
NTPC ANTA SOLAR PV STATION	1.43	0.05
JSW Energy Utkal Ltd	1.40	0.05
Jhabua	1.38	0.05
AMP Energy Green Five Private Limited	1.38	0.05
TRN Energy	1.36	0.05
NAPP	1.36	0.05
TANAKPUR	1.28	0.05
DHAULIGANGA HEP	1.27	0.05
ACB (India) Ltd.	1.27	0.05
Azure Power Pavagada	1.27	0.05
BALCO	1.25	0.05
Goa	1.25	0.05
Gujarat State Electricity Corporation Limited, Radhanesda	1.23	0.05

Powerica	1.23	0.05
AMP Energy Green Six Private Limited	1.22	0.05
Ayana Renewable Power Three Private Limited	1.22	0.05
Jindal Steel & power Ltd. (Dangamahua CPP)	1.22	0.05
OneVolt Energy Private Limited	1.18	0.04
Fortum Finsurya	1.15	0.04
TP Saurya	1.08	0.04
TATA, NPkunta	1.06	0.04
Gujarat State Electricity Corporation Limited phase-2	1.06	0.04
GUJARAT INDUSTRIES POWER COMPANY LTD	1.05	0.04
Auraiya Solar	1.03	0.04
Powergrid HVDC	1.02	0.04
Shree Cement Ltd	0.92	0.03
Chamera 2	0.91	0.03
SALAL Hydro	0.90	0.03
TATA POWER RENEWABLE ENERGY LTD, Radhanesda	0.88	0.03
Tashiding Hydro Power	0.88	0.03
SENBCORP GREEN INFRA PRIVATE LIMITED	0.87	0.03
PALATANA	0.87	0.03
Bairasuil Hydro Power	0.86	0.03
Athena Karnal Solar Power Pvt. Ltd	0.86	0.03
TRANSITION SUSTAINABLE ENERGY SERVICES ONE PRIVATE LIMITED	0.85	0.03
COASTAL ENERGEN PVT LTD	0.85	0.03
Athena Bhiwadi Solar Power Pvt. Ltd	0.85	0.03
GMR Kamalanga Energy Ltd.	0.82	0.03
Athena Hisar Solar Power Pvt. Ltd	0.82	0.03
SJVN	0.81	0.03
Yarrow, Pavagada	0.80	0.03
SENBCORP GREEN INFRA PRIVATE LIMITED (INFIRM)	0.78	0.03
Kishanganga HEP	0.74	0.03
Chamera 3	0.72	0.03
PVG_AMPLUS_PAVAGADA	0.71	0.03
Adani Solar Energy Four Private Limited	0.69	0.03
PVG_AMPLUS_TUMKUR	0.69	0.03
INDIGRID SOLAR-II (AP) PRIVATE LIMITED	0.68	0.03
JUNIPER GREEN COSMIC PRIVATE LIMITED	0.67	0.03
NTPC Kawas Gas Plant	0.63	0.02
INOX GREEN ENERGY SERVICES LIMITED	0.63	0.02
Renew Solar Power Private Limited Bikaner	0.62	0.02
NLCTSII EXPANSION 2	0.59	0.02
Adhunik Power & Natural Resources Ltd	0.58	0.02
Azure NPkunta	0.57	0.02
Dhariwal Infrastructure	0.56	0.02
Singoli Bhatwari HEP	0.56	0.02
Kopili HEP	0.55	0.02
Rihand Stage 1	0.54	0.02
Simhadari Floating Solar	0.53	0.02
Serentica Renewables India 4 Private Limited	0.51	0.02
Renew Power Pavagada	0.49	0.02
INDIGRID SOLAR-I (AP) PRIVATE LIMITED	0.48	0.02
Loktak HEP	0.46	0.02
Mega Solis Renewables Private Limited	0.43	0.02
NTPC Jhanor-Gandhar Gas Power plant	0.41	0.02
Sainj Hydro Power	0.40	0.02
RANGIT	0.40	0.01
Reliance Industries Limited Jamnagar	0.39	0.01
Doyang HEP	0.38	0.01
Chuzachen	0.36	0.01
Sewa 2 Hydro Power	0.36	0.01
Transition Sustainable Energy Services Pvt Ltd	0.35	0.01
Sherisha Rooftop Solar SPV Four Private Limited	0.33	0.01
Altra Xergi Power Private Limited	0.33	0.01
Gandhar Solar	0.31	0.01
Spring, Pugalur	0.30	0.01
Parbati 3	0.29	0.01

NTPC Kawas Solar	0.29	0.01
Unchahar Solar	0.28	0.01
Pare HEP	0.28	0.01
Adept Renewable Technologies Private Limited	0.26	0.01
Ranganadi HEP	0.25	0.01
ACME Chittorgarh Solar Energy Private Limited	0.25	0.01
AD hydro power	0.24	0.01
RENEW SURYA PRATAP	0.22	0.01
Jorethang Loop Hydro Electric Project	0.22	0.01
Baba Atomic research Centre	0.21	0.01
Renew Surya Aayan Private Limited	0.21	0.01
Kopili-2 HEP	0.18	0.01
DIKCHU	0.17	0.01
KREDL, Pavagada	0.17	0.01
Rongnichu Hydro Electric Project	0.17	0.01
Singrauli Solar	0.16	0.01
Sorang HEP	0.16	0.01
Lanco Budhil	0.15	0.01
Ratnagiri Gas and Power PVT Limited	0.14	0.01
Transition Green Energy Private Limited	0.14	0.01
Meenakshi Energy Limited	0.11	0.004
Adani Solar Energy Jaisalmer Two Private Limited, bhadla	0.11	0.004
Dadri Solar	0.08	0.003
Renew Surya Vihaan Private Limited	0.08	0.003
Talcher Solar	0.07	0.003
NFL	0.05	0.002
Powergrid HVDC	0.03	0.001
Power grid HVDC	0.03	0.001
SINGRAULI HYDRO	0.01	0.0003
<b>TOTAL</b>	<b>2662.38</b>	<b>100.00</b>
<b>Volume Imported by top 5 Regional Entities</b>	<b>578.60</b>	<b>21.73</b>

Source: NLDC

**Table-36: VOLUME AND PRICE OF RENEWABLE ENERGY CERTIFICATES (RECs) TRANSACTED THROUGH POWER EXCHANGES AND THROUGH TRADERS (BILATERAL), JANUARY 2025**

Sr. No	Details of REC Transactions	Through Power Exchange			Bilateral through Traders
		IEX	PXIL	HPX	
1	Volume of Buy Bid	4200824	3075126	310927	-
2	Volume of Sell Bid	6258233	5056269	2102817	-
3	Ratio of Buy Bid to Sell Bid Volume	0.67	0.61	0.15	-
4	Traded Volume (MWh)	3803073	2529749	210927	712432
5	Weighted Average Price (₹/MWh)	330	328	350	328

Source: Power Exchanges & Grid-India REC Report

Note: 1 REC = 1 MWh

**Table-37(a): VOLUME AND PRICE OF CROSS BORDER TRADE THROUGH DAY AHEAD MARKET AT IEX, JANUARY 2025**

Sr. No.	Neighbouring Country	Volume (MU)			Weighted Average Price (₹/kWh)	
		Sale	Purchase	Net*	Sale	Purchase
1	Nepal	0.00	150.26	150.26	-	3.63
2	Bhutan	0.00	188.74	188.74	-	2.82
	<b>Total</b>	<b>0.00</b>	<b>339.00</b>	<b>339.00</b>	-	-

Source: IEX

\* Net indicates difference of volume purchased and sold by the respective neighbouring country

Note: No Cross Border transactions were recorded in DAM at PXIL and HPX

**Table-37(b): VOLUME AND PRICE OF CROSS BORDER TRADE THROUGH REAL TIME MARKET AT IEX, JANUARY 2025**

Sr. No.	Neighbouring Country	Volume (MU)			Weighted Average Price (₹/kWh)	
		Sale	Purchase	Net*	Sale	Purchase
1	Nepal	0.59	43.04	42.45	2.90	3.43
2	Bhutan	0.00	5.03	5.03	-	3.00
	<b>Total</b>	<b>0.59</b>	<b>48.07</b>	<b>47.48</b>	-	-

Source: IEX

\* Net indicates difference of volume purchased and sold by the respective neighbouring country

Note: No Cross Border transactions were recorded in RTM at PXIL and HPX



**Economics Division**  
**Central Electricity Regulatory Commission**  
**6th, 7th & 8th Floors, Tower B, World Trade Centre,**  
**Nauroji Nagar, New Delhi- 110029**